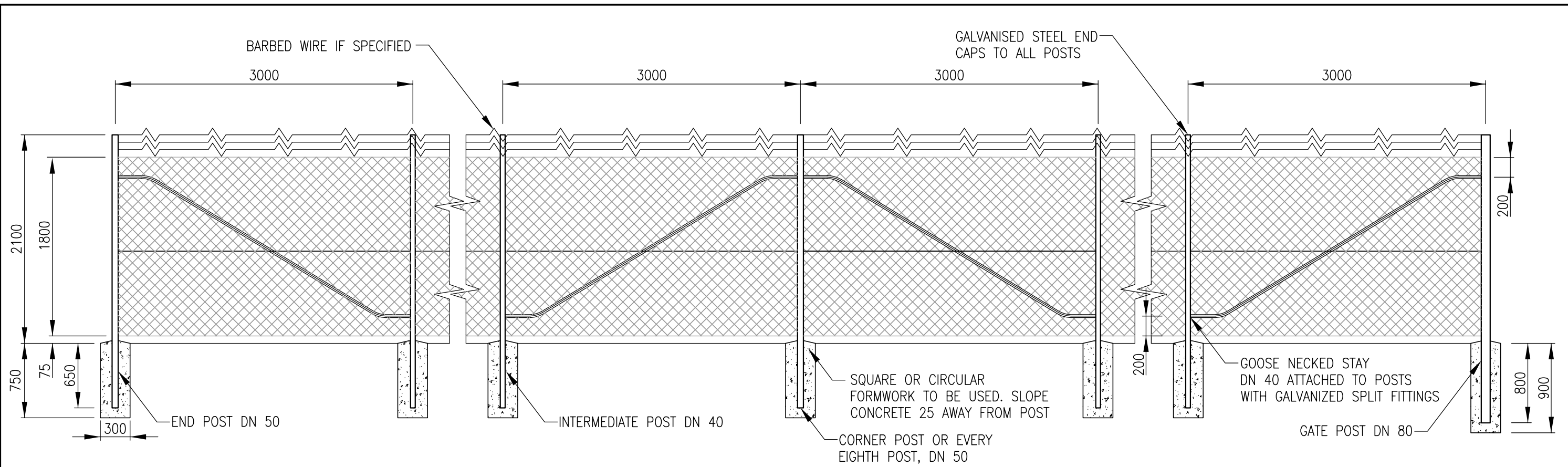


STD. DWG. NO.	DESCRIPTIONS
	FENCING
M-002	TYPICAL WIRE FENCING
M-003	CHAINWIRE GATE
M-004	LOG BARRIER FENCING
M-005	TUBULAR STEEL FENCING
	BIKEWAYS
M-006	BOLT-IN BIKE RACK
M-007	ANTI-VANDAL BIKEWAY AND LAMP POST
	CEMETERIES
M-008	DALBY CEMETERY HEADSTONE PLAQUE
M-009	DALBY CEMETERY BRASS PLAQUE
M-010	JANDOWAE CEMETERY HEADSTONE
	OTHER
M-011	BANNER SPECIFICATIONS
M-012	PIVOTING BANNER POLES WITH BANNER

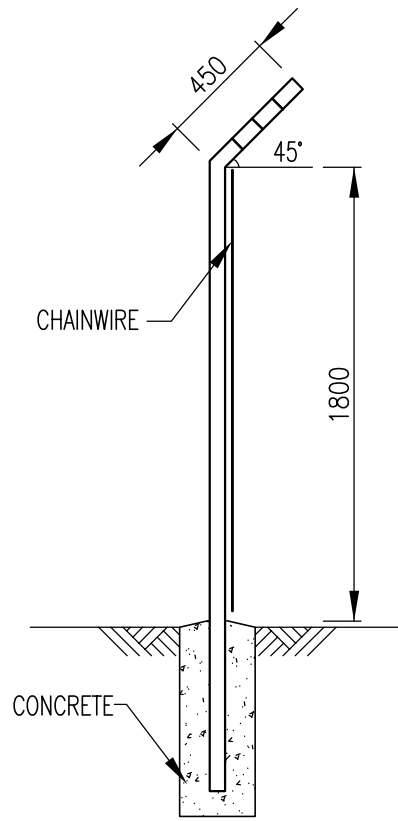
Revisions	Dwn by	Date	Field Book No.	DRAWN L. Porter	DESIGNED S. Forbes	CHECKED S. Forbes	EXAMINED G. Parsons	RECOMMENDED S. Hegedus RPEQ. 5234	TECHNICAL SERVICES MANAGER	DATE 09/08/2015	Job No./s	Works Order No.	Auxiliary Plan No's.	Horiz. Section NTS	Vert. Section NTS	STANDARD DRAWING – MISCELLANEOUS INDEX	
			Level Book No.														
			Datum														
A	Original Issue																Plan No. M-001 No. 1 of 12 Plans Rev. A



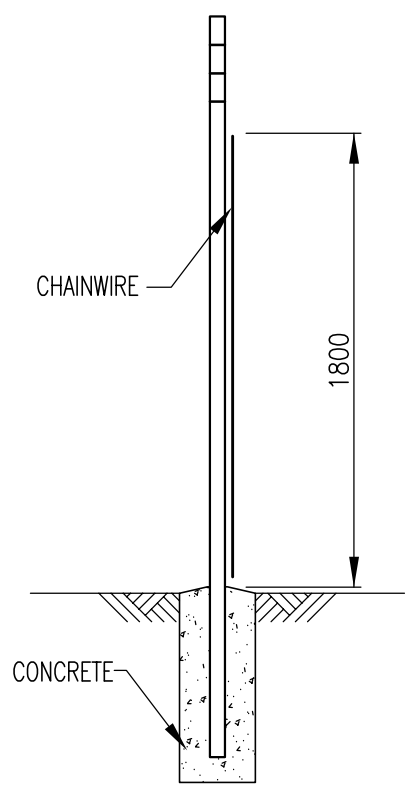
Computer Location S:\Engineering Services\Standard Drawings\M-Miscellaneous\WDRC Standard Drawings - Miscellaneous.dwg



TYPICAL SECTION



TYPE 1
CRANKED



TYPE 2
STRAIGHT

NOTES

1. GATE POSTS TO BE DN 80 (88.9 OD, 4.0 wall thk) (LIGHT) GALVANIZED STEEL TUBE, TO AS 1074.
2. CORNER, END AND EVERY EIGHTH POST TO BE DN 50 (60.3 OD, 3.6 wall thk) (LIGHT) GALVANIZED STEEL TUBE TO AS 1074.
3. INTERMEDIATE POSTS AND GOOSE NECKED STAYS TO BE DN 40 (OD 48.3, 3.2 wall thk) (LIGHT) GALVANIZED STEEL TUBE TO AS 1074.
4. GALVANIZED STEEL END CAPS TO BE PROVIDED TO ALL POSTS. ALL POSTS TO BE VERTICAL.
5. CORNER POSTS TO BE ADOPTED WHERE THE CHANGE IN ANGLE IN HORIZONTAL ALIGNMENT EXCEEDS 20 DEGREES.
6. STAYS TO BE PROVIDED AT END POSTS, GATE POSTS, CORNER POSTS AND EVERY EIGHTH POST.
7. STANDARD COUPLINGS (DOWN-EE FITTINGS) MAY BE USED AS AN ALTERNATIVE TO WELDS. FOR ALL CONNECTIONS EXCEPT GOOSE NECKED STAYS WHICH SHALL BE WELDED TO POSTS.
8. ALL WELDS TO BE 5 THICK CONTINUOUS FILLET WELDS TO AS 1554. WITH COLD GALVANIZING TREATMENT TO COMPLETED WELDS.
9. CABLES TO BE 4mm DIAMETER HELICOIL INSTALLED IN ACCORDANCE WITH AS 1725.1-2010.
10. ALL POSTS, STAYS AND CABLES ARE TO BE GALVANIZED IN ACCORDANCE WITH AS 4680-2006 & AS2841-2005.
11. ALL CONCRETE N25 IN ACCORDANCE WITH AS 1379 AND AS 3600.
12. CHAIN WIRE TO BE FIXED USING 2mm WIRE TIES FOR INTERMEDIATE POSTS AT 3 LOCATIONS AND END POSTS AT 3 LOCATIONS.
13. CHAINWIRE WILL BE CLIPPED TO SUPPORT CABLES WITH 2mm CLIPS. REFER TO AS 1725.1-2010.
HORIZONTAL CABLE AT 375 CENTRES TO TOP CABLE
HORIZONTAL CABLE AT 600 CENTRES TO MIDDLE CABLE
HORIZONTAL CABLE AT 450 CENTRES TO BOTTOM CABLE
14. BARBED WIRE TO AS 2423.
15. ALL DIMENSIONS IN MILLIMETRES.

Revisions	Drn by	Date
C	D.R.H	01.12.16
B	L.T.P.	11.10.11
A		

Field Book No.	
Level Book No.	
Datum	

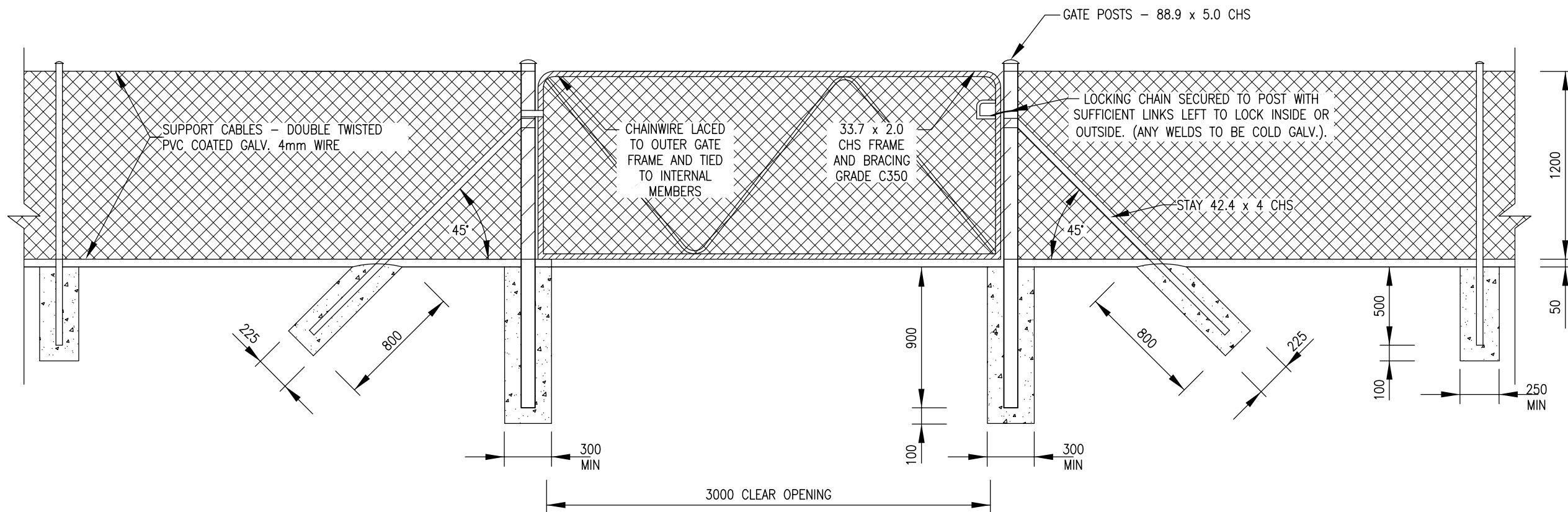
DRAWN	S. Robertson
DESIGNED	S. Forbes
CHECKED	S. Forbes
EXAMINED	G. Parsons
RECOMMENDED	S. Hegedus RPEQ. 5234
TECHNICAL SERVICES MANAGER	
DATE	09/08/2015
Job No./s	
Works Order No.	

WESTERN DOWNS REGIONAL COUNCIL

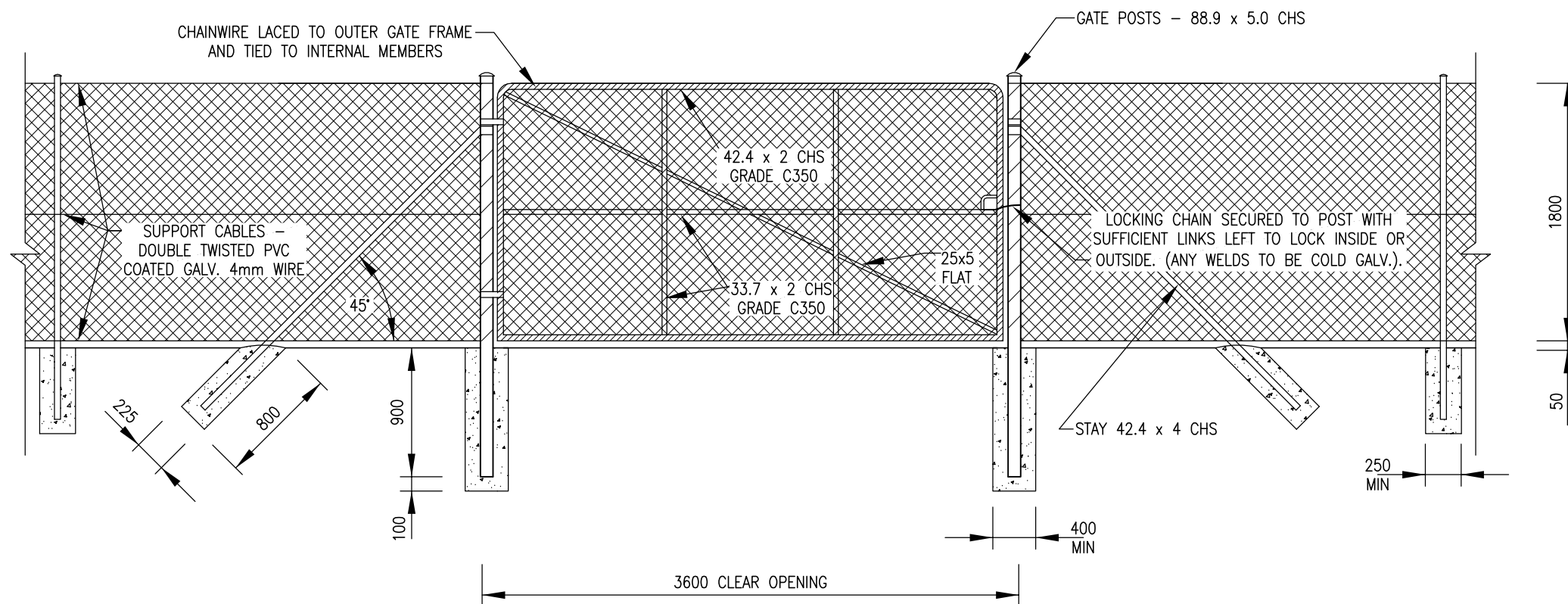


Typical Section Scale 1:40 on A3	
Type 1 & 2 Scale 1:30 on A3	

STANDARD DRAWING – MISCELLANEOUS		
TYPICAL WIRE FENCING		
Plan No. M-002	No. 2 of 12 Plans	Rev. C



1200 HIGH CHAINWIRE GATE



1800 HIGH CHAINWIRE GATE

NOTES

1. ALL DIMENSIONS IN MILLIMETRES.
2. CIRCULAR HOLLOW SECTIONS (CHS) TO BE GRADED C250 TO AS 1163 UNLESS INDICATED OTHERWISE.
3. GALVANISED CHAINWIRE SHALL CONFORM TO AS 2423, WITH A MESH SIZE OF 50mm AND 2.5mm DIAMETER WIRE, AND COATED WITH GREEN PVC.
4. CONCRETE GRADE SHALL BE N32/20.
5. BARBED SELVEDGES SHALL BE USED AT TOP EXCEPT ON GATES AND FENCES WHERE A TOP RAIL IS SPECIFIED, WHERE KNUCKLED SELVEDGES ARE USED TOP AND BOTTOM.
6. GALVANISED FENCING WIRE TO AS 2423.
7. TIE/LACING WIRE SHALL BE 1.57mm GREEN PVC COATED GALVANISED WIRE UNLESS OTHERWISE SPECIFIED.
8. BOLTS, NUTS AND WASHERS TO BE HOT-DIP GALVANISED TO AS 1214.
9. WELDING SHALL BE TO AS/NZS 1554.1.
10. ALL STEELWORK AND FITTINGS SHALL BE HOT-DIP GALVANISED TO AS/NZS 4680.
11. CORNER POSTS TO BE ADOPTED WHERE THE CHANGE IN ANGLE EXCEEDS 20°.

Revisions	Drn by	Date
A	Original Issue	

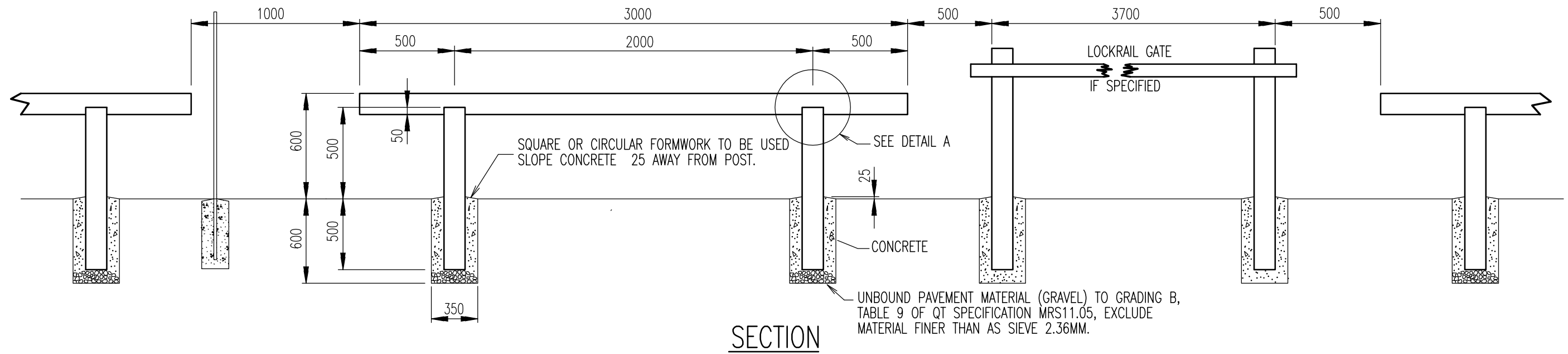
Field Book No.	
Level Book No.	
Datum	

DRAWN	L. Porter
DESIGNED	G. Parsons
CHECKED	S. Forbes
EXAMINED	G. Parsons
RECOMMENDED	S. Hegedus RPEQ. 5234
TECHNICAL SERVICES MANAGER	
DATE	09/08/2015
Job No./s	Works Order No.

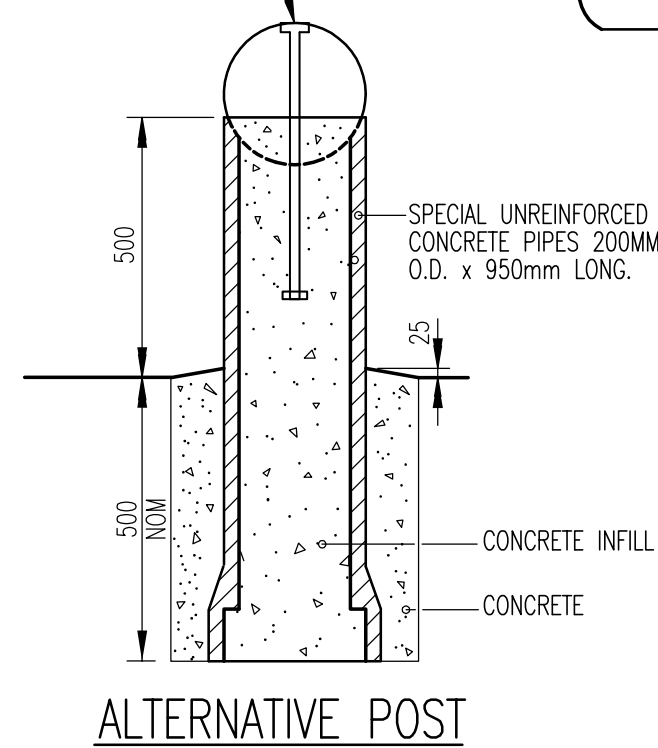
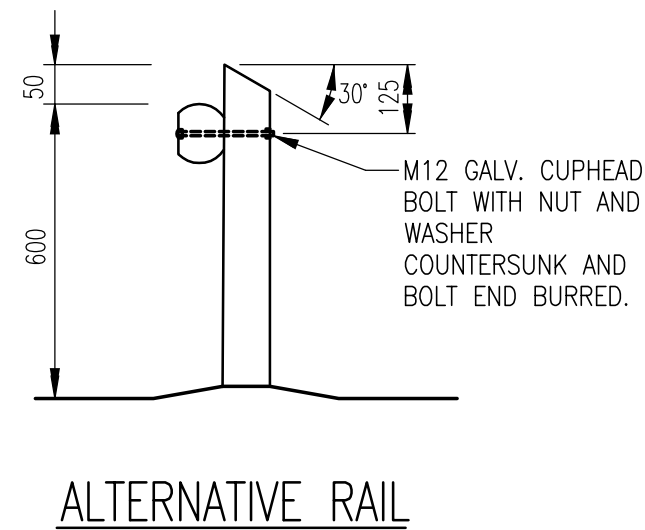
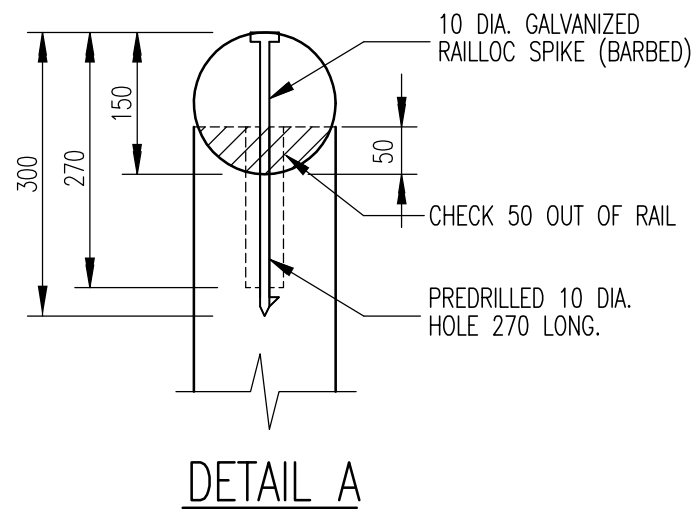
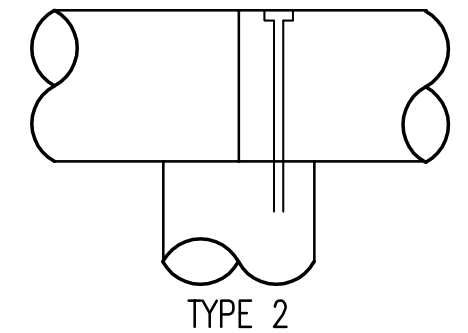
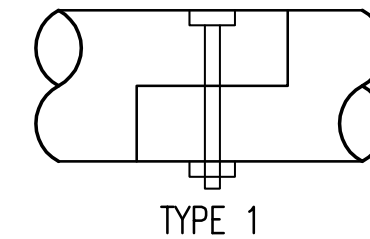
WESTERN DOWNS REGIONAL COUNCIL

1200 Gate Scale 1:30 on A3	
1800 Gate Scale 1:40 on A3	

STANDARD DRAWING – MISCELLANEOUS		
1800 AND 1200 HIGH CHAINWIRE GATE		
Plan No. M-003	No. 3 of 12 Plans	Rev. A



10MM GALVANIZED BOLT 300MM LONG
PROJECTING 95MM ABOVE PIPE.
CHECK NUT INTO LOG, PUNCH THREAD.



TYPICAL RAIL JOINTS FOR CONTINUOUS FENCING

NOTES

1. CONCRETE N25 IN ACCORDANCE WITH AS 1379 AND AS 3600.
2. CCA LOG BARRIERS TO BE 150 DIAMETER, GRADE A SUPERLOGS OR EQUIVALENT TREATED TO AS 1604.
3. PAINT ALL CUT SURFACES WITH CUPRINOL OR EQUIVLENT.
4. HEXAGONAL HEAD BOLTS TO AS 1111. NUTS TO AS 1112. WASHERS TO AS 1237. GALVANIZING TO 1214.
5. ALL DIMENSIONS IN MILLIMETRES.

Revisions	Drn by	Date
A	Original Issue	

Field Book No.	
Level Book No.	
Datum	

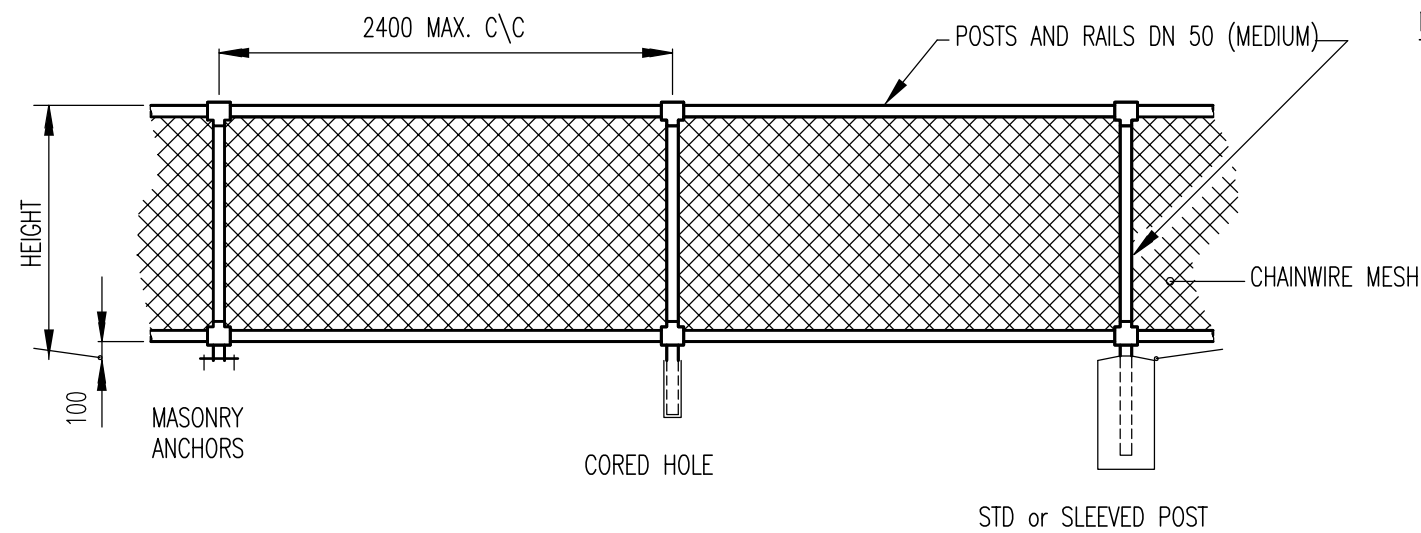
DRAWN	S. Robertson
DESIGNED	S. Forbes
CHECKED	S. Forbes
EXAMINED	G. Parsons
RECOMMENDED	S. Hegedus RPEQ. 5234
TECHNICAL SERVICES MANAGER	
DATE	09/08/2015
Job No./s	Works Order No.

WESTERN DOWNS REGIONAL COUNCIL

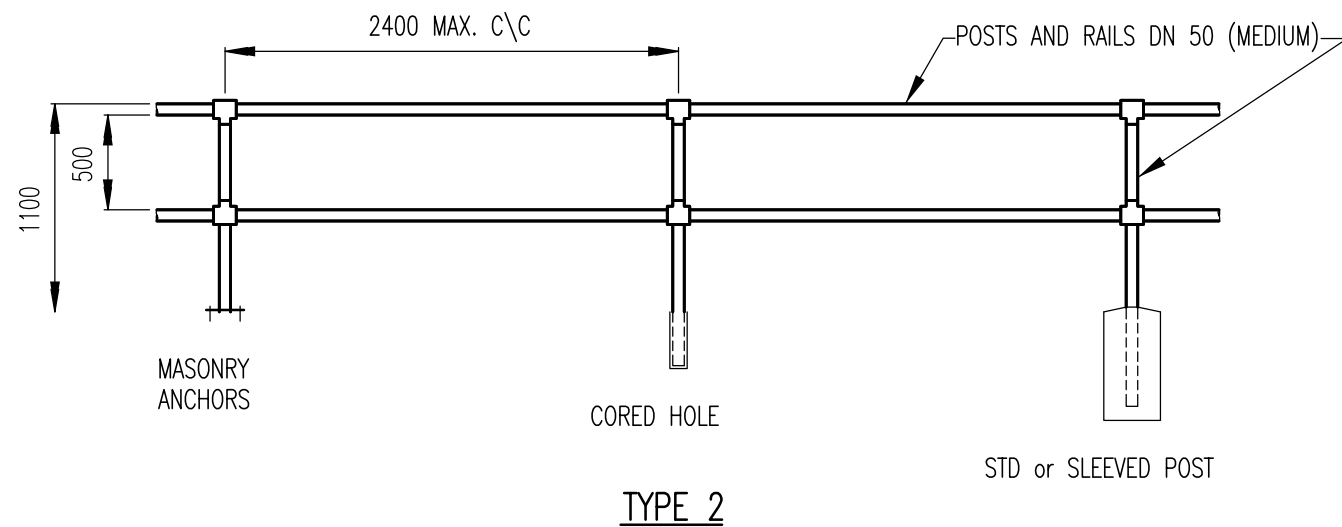
Auxiliary Plan No's.

Horiz. Section	NTS
Vert. Section	NTS

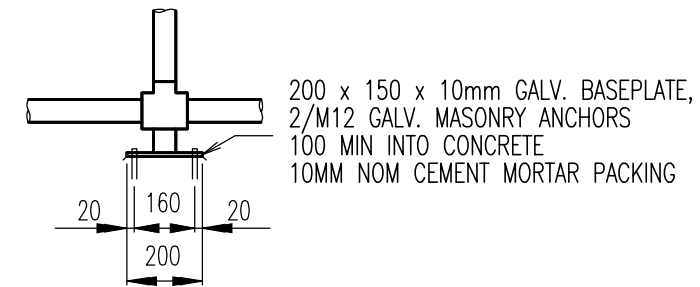
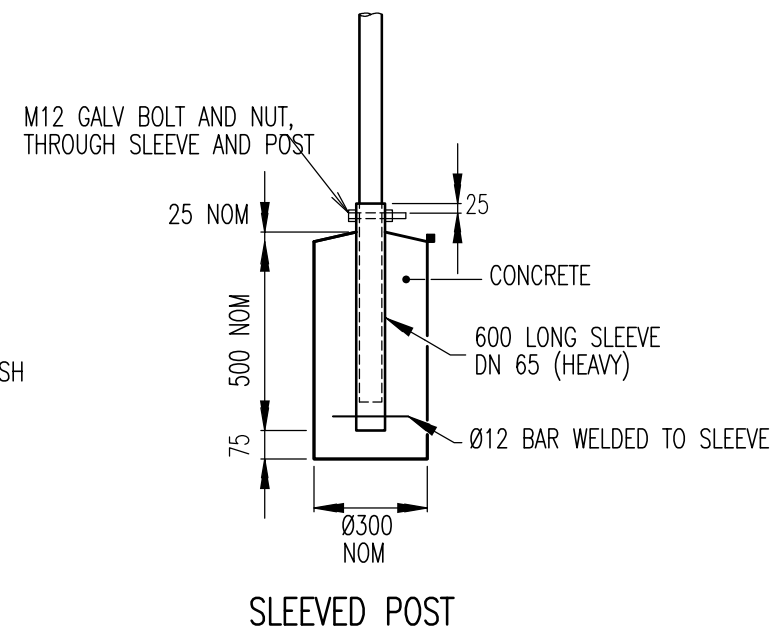
STANDARD DRAWING – MISCELLANEOUS LOG BARRIER FENCING		
Plan No. M-004	No. 4 of 12 Plans	Rev. A



TYPE 1 - A (HEIGHT - 1100)
 TYPE 1 - B (HEIGHT - 1350)



TYPE 2



MASONRY ANCHORS

FOOTING DETAILS

NOTES

1. REFER PROJECT DRAWINGS FOR TYPE OF FENCE TO BE INSTALLED AND TYPE OF FOOTING TO BE ADOPTED.
2. CONSTRUCTION OF POSTS & RAILS SHALL BE DONE USING STANDARD COUPLING CONNECTIONS ONLY. (NO WELDS).
3. GALVANIZED CHAINWIRE TO BE 2.6mm THICK X 50 MESH TO AS 2423.
4. Ø12 BARS, GRADE 250 STEEL TO AS 1302.
5. HEXAGONAL HEAD BOLTS TO AS 1111.
NUTS TO AS 1112.
WASHERS TO AS 1237.
GALVANIZING TO AS 1214.
6. ALL RAILS AND POSTS GALVANIZED STEEL TUBE TO AS 1074.
7. CONCRETE N25 IN ACCORDANCE WITH AS 1379 AND AS 3600.
8. ALL DIMENSIONS IN MILLIMETERS.

Revisions	Drn by	Date
A	Original Issue	

Field Book No.	
Level Book No.	
Datum	

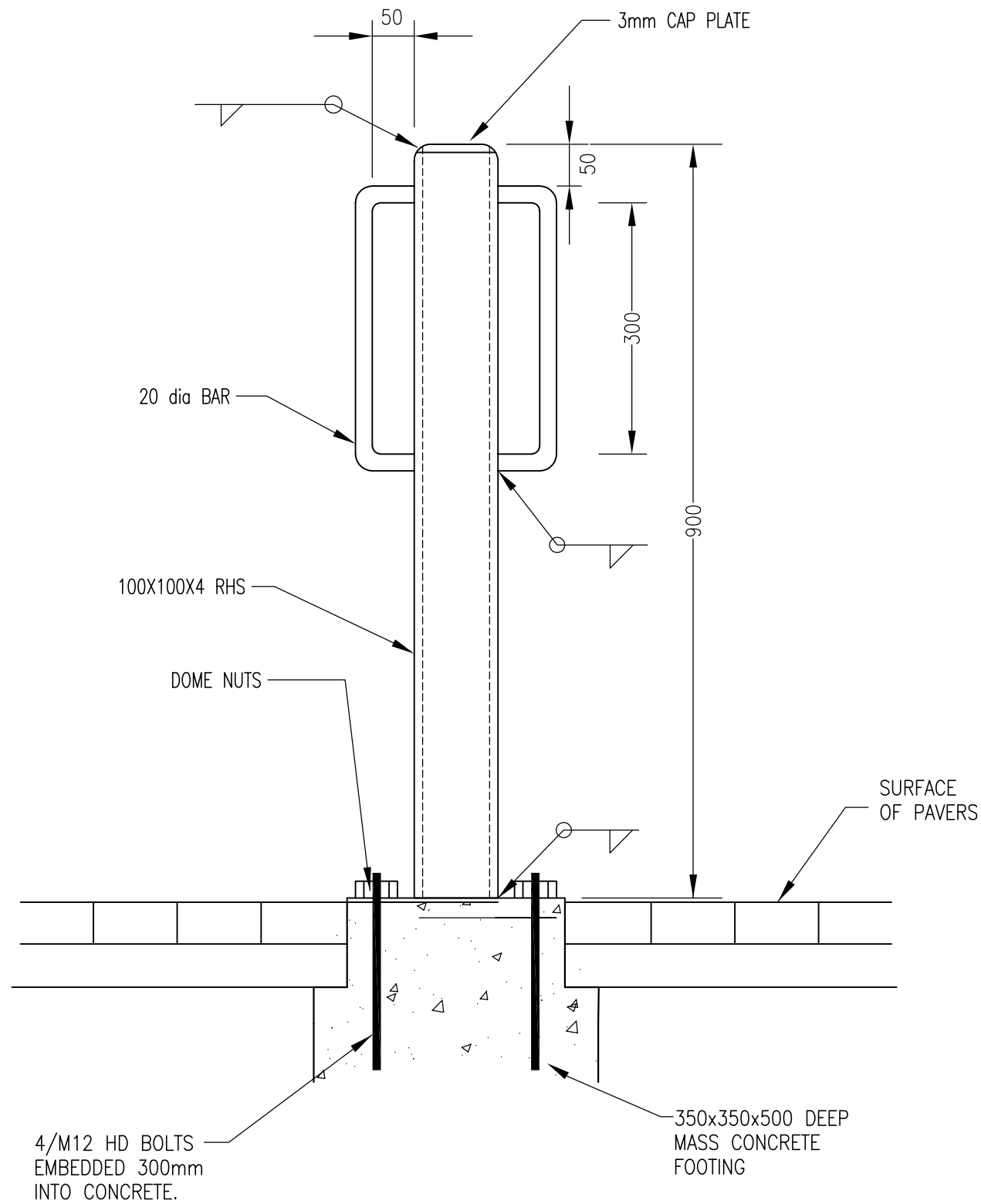
DRAWN	S. Robertson
DESIGNED	S. Forbes
CHECKED	S. Forbes
EXAMINED	G. Parsons
RECOMMENDED	S. Hegedus RPEQ. 5234
TECHNICAL SERVICES MANAGER	
DATE	09/08/2015
Job No./s	
Works Order No.	

WESTERN DOWNS REGIONAL COUNCIL

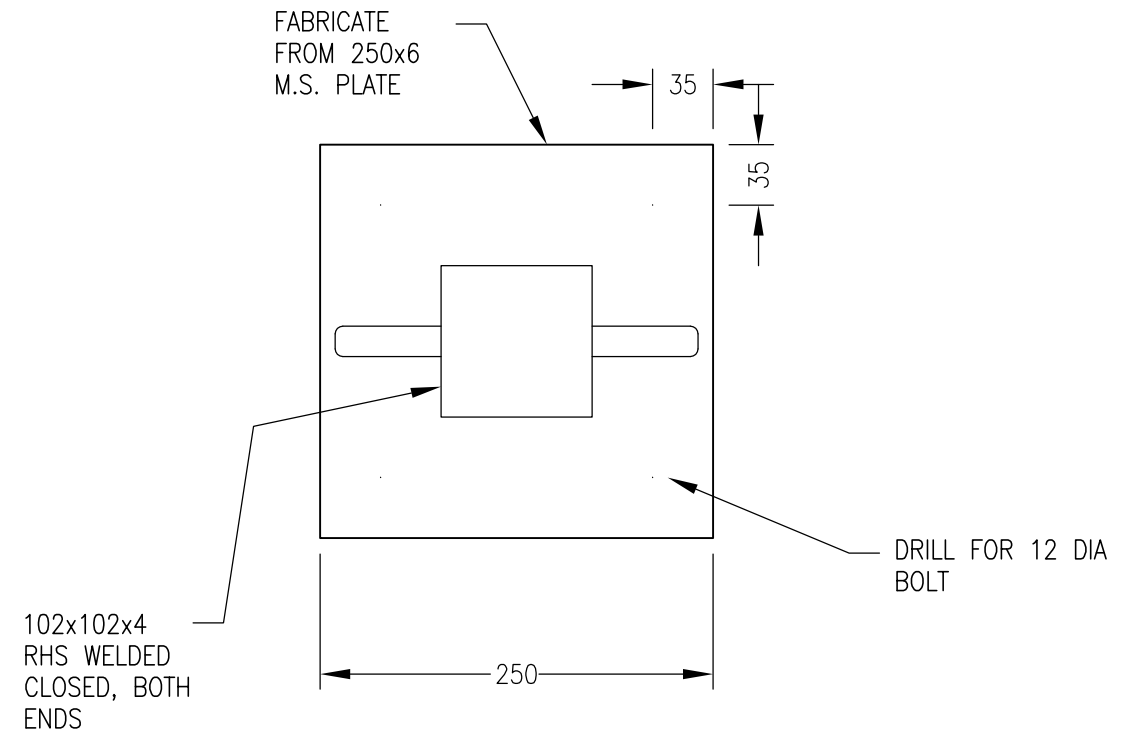
Auxiliary Plan No's.

Horiz. Section	NTS
Vert. Section	NTS

STANDARD DRAWING - MISCELLANEOUS TUBULAR STEEL FENCING	
Plan No. M-005	No. 5 of 12 Plans Rev. A



ELEVATION



PLAN

NOTES
AFTER FABRICATION, POWDER
COAT HERITAGE GREEN

Revisions	Drn by	Date
A	Original Issue	

Field Book No.	
Level Book No.	
Datum	

DRAWN	S. Robertson
DESIGNED	S. Forbes
CHECKED	S. Forbes
EXAMINED	G. Parsons
RECOMMENDED	S. Hegedus RPEQ. 5234
TECHNICAL SERVICES MANAGER	
DATE	09/08/2015
Job No./s	Works Order No.

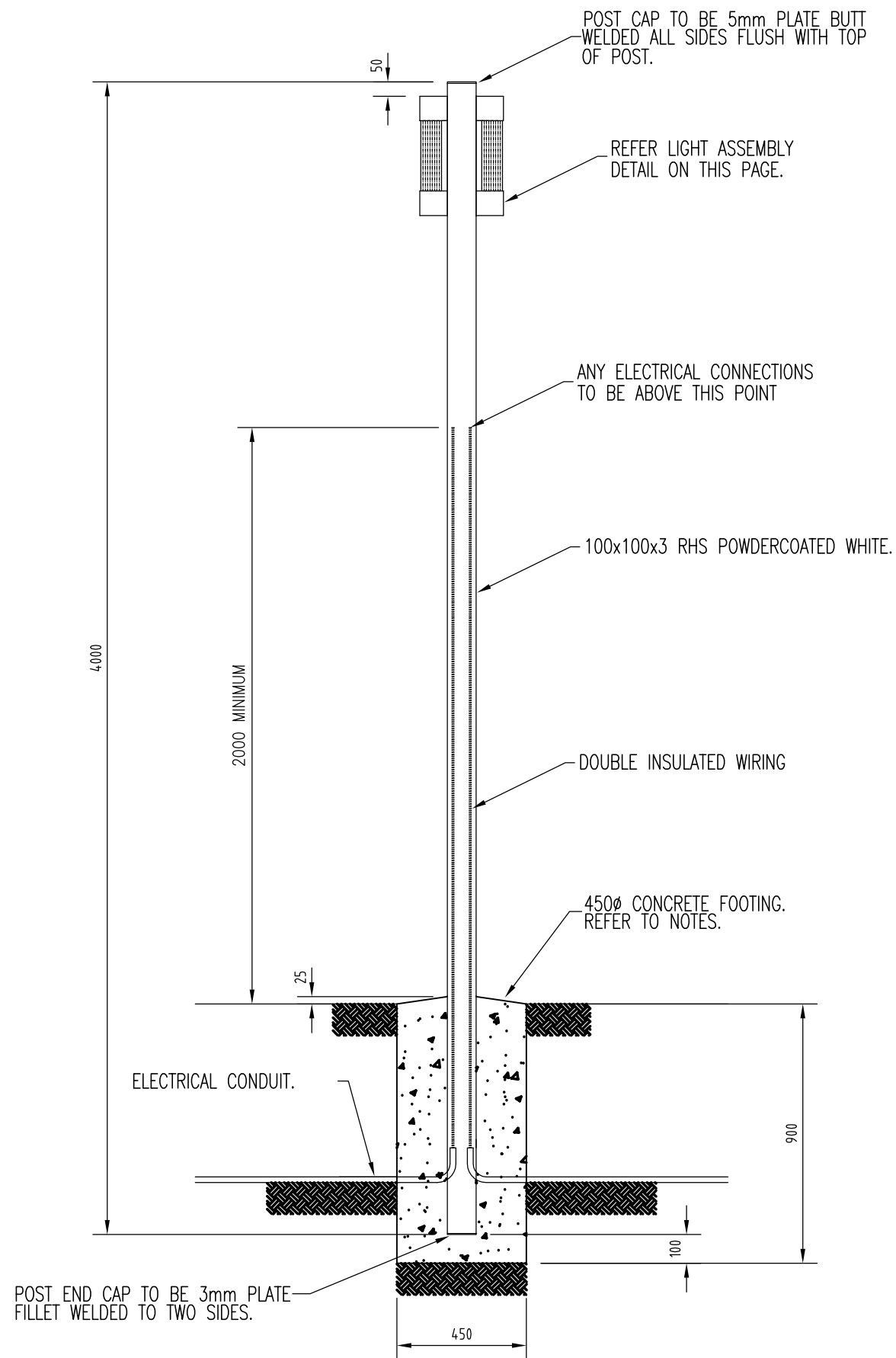
WESTERN DOWNS REGIONAL COUNCIL



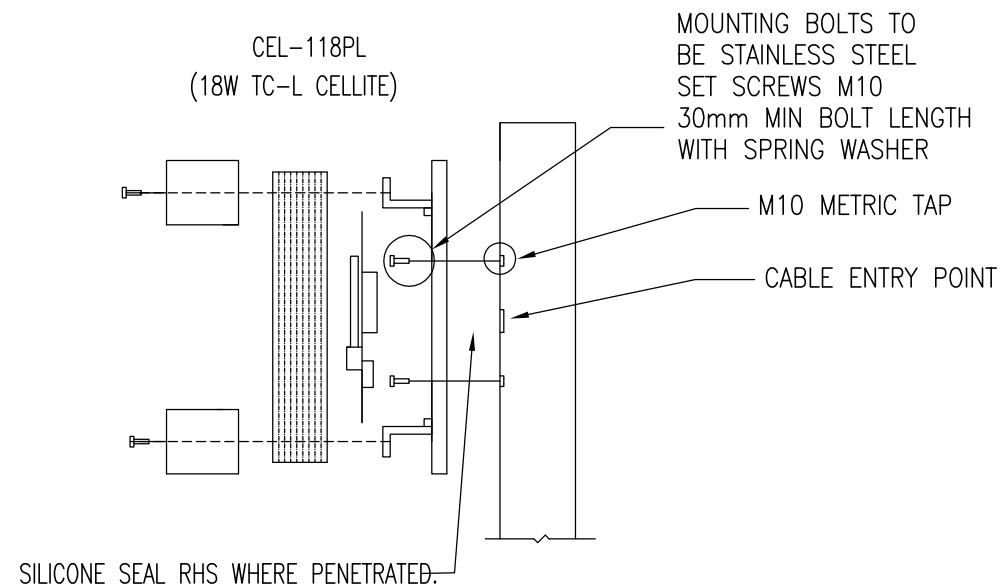
Horiz. Section
NTS
Vert. Section
NTS

STANDARD DRAWING – MISCELLANEOUS
BOLT-IN BIKE RACK

Plan No. M-006 No. 6 of 12 Plans Rev. A



FOOTING AND POST DETAIL



LIGHT ASSEMBLY DETAIL

ANNEX A TO MYALL CREEK BIKEPATH STAGE 3 UPGRADE SPECIFICATION FOR WESTERN DOWNS REGIONAL COUNCIL

FOOTING NOTES:

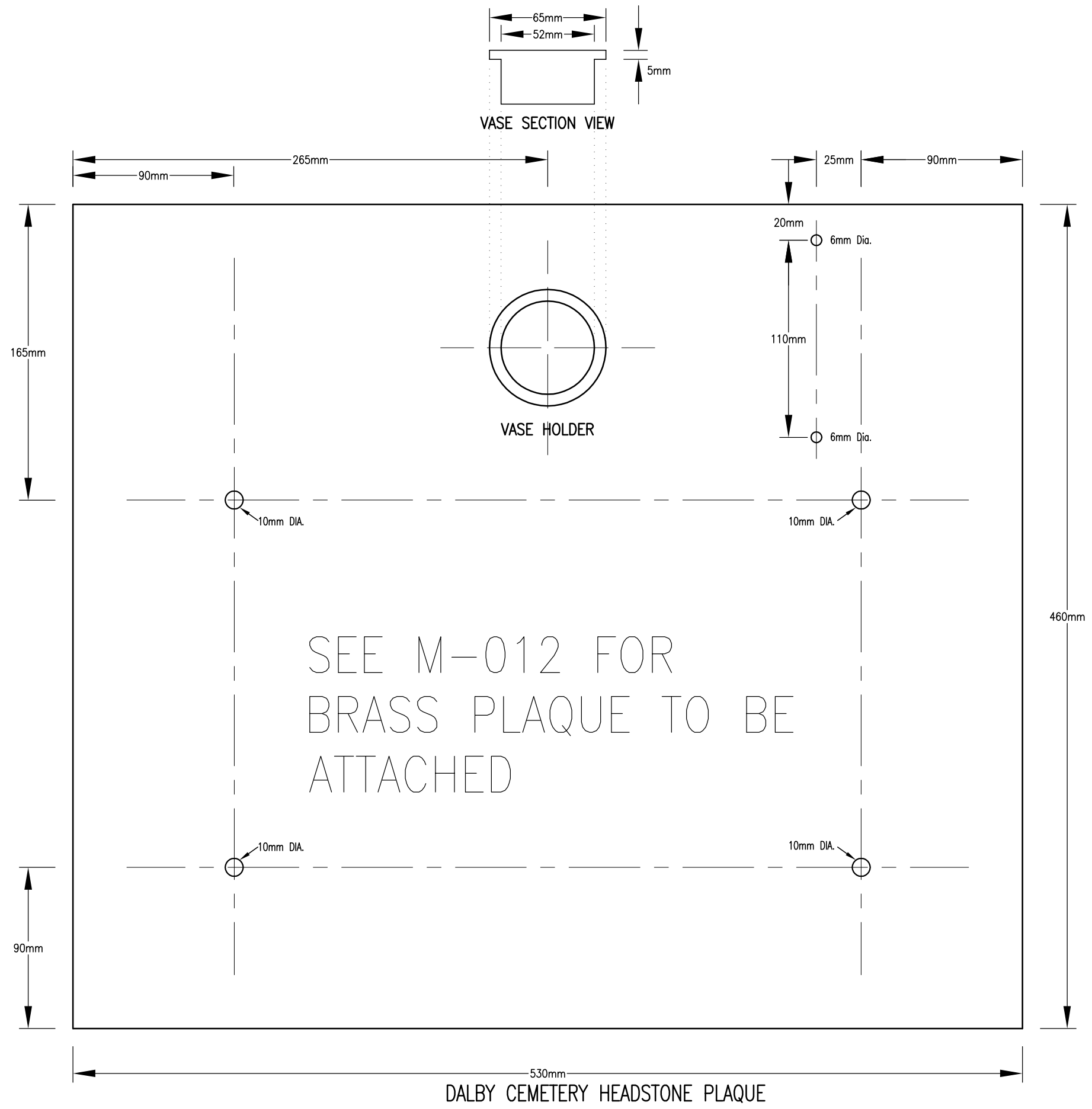
1. CONCRETE TO BE 25MPa/20mm AGG.
2. CONCRETE TO BE POURED DIRECTLY AGAINST EARTH AUGER HOLE EXCEPT WHERE SOME FORMING IS REQUIRED TO ALLOW FOR CONDUIT ENTRY.
3. ALL CONCRETE FOOTINGS ARE TO BE A MINIMUM 150mm FROM EDGE OF CONCRETE SLAB BIKEWAY.
4. IT IS THE CONTRACTOR'S RESPONSIBILITY TO IDENTIFY SERVICE LOCATIONS BEFORE FOOTINGS ARE DUG. RESULTING CLASHES ARE THE LIABILITY OF THE CONTRACTOR.

GENERAL NOTES:

1. FITTINGS, CABLE ACCESS PANELS, CABLES AND CONDUITS ARE TO BE PROVIDED WITH ADEQUATE MEANS TO REDUCE THE INGRESS OF WATER.
2. LIGHT FITTINGS ARE TO BE DIRECTED PARALLEL TO THE BIKEPATH IN NON BUILT-UP AREAS AS INDICATED IN FOOTING AND POST DETAIL.
3. LIGHT FITTINGS ARE TO BE DIRECTED ACROSS THE BIKEPATH (AWAY FROM BUILT-UP AREA) IN BUILT-UP AREAS AND REDUCED TO A SINGLE LIGHT FITTING AS INDICATED ON LIGHT ASSEMBLY DETAIL.
4. ALL RHS POSTS TO BE POWDERCOATED WHITE FOLLOWING ANY NECESSARY FABRICATION.
5. IF IT IS NECESSARY TO BACKFILL TRENCH WITH CONCRETE FOR INSTALLATION PURPOSES, THE CONCRETE (20Mpa) SHALL BE A MIN OF 75mm BELOW THE NATURAL GROUND SURFACE. EARTH BACKFILL CAN THEN BE USED TO BRING TRENCH TO THE NATURAL GROUND LEVEL. CONCRETE TRENCH BACKFILL MUST BE A MINIMUM OF 150mm FROM EXISTING BIKEWAY SLAB.

Revisions	Drn by	Date	Field Book No.	DRAWN S. Robertson		Footing & Post Scale 1:20 on A3 0 0.4	STANDARD DRAWING – MISCELLANEOUS ANTI-VANDAL BIKEWAY AND LAMP POST
			Level Book No.	DESIGNED S. Forbes			
			Datum	CHECKED S. Forbes			
				EXAMINED G. Parsons			
				RECOMMENDED S. Hegedus RPEQ. 5234		Light Assembly Scale 1:10 on A3 0 0.2	Plan No. M-007 No. 7 of 12 Plans Rev. A
			TECHNICAL SERVICES MANAGER				
			DATE 09/08/2015				
A Original Issue			Job No./s	Works Order No.	Auxiliary Plan No.'s.		

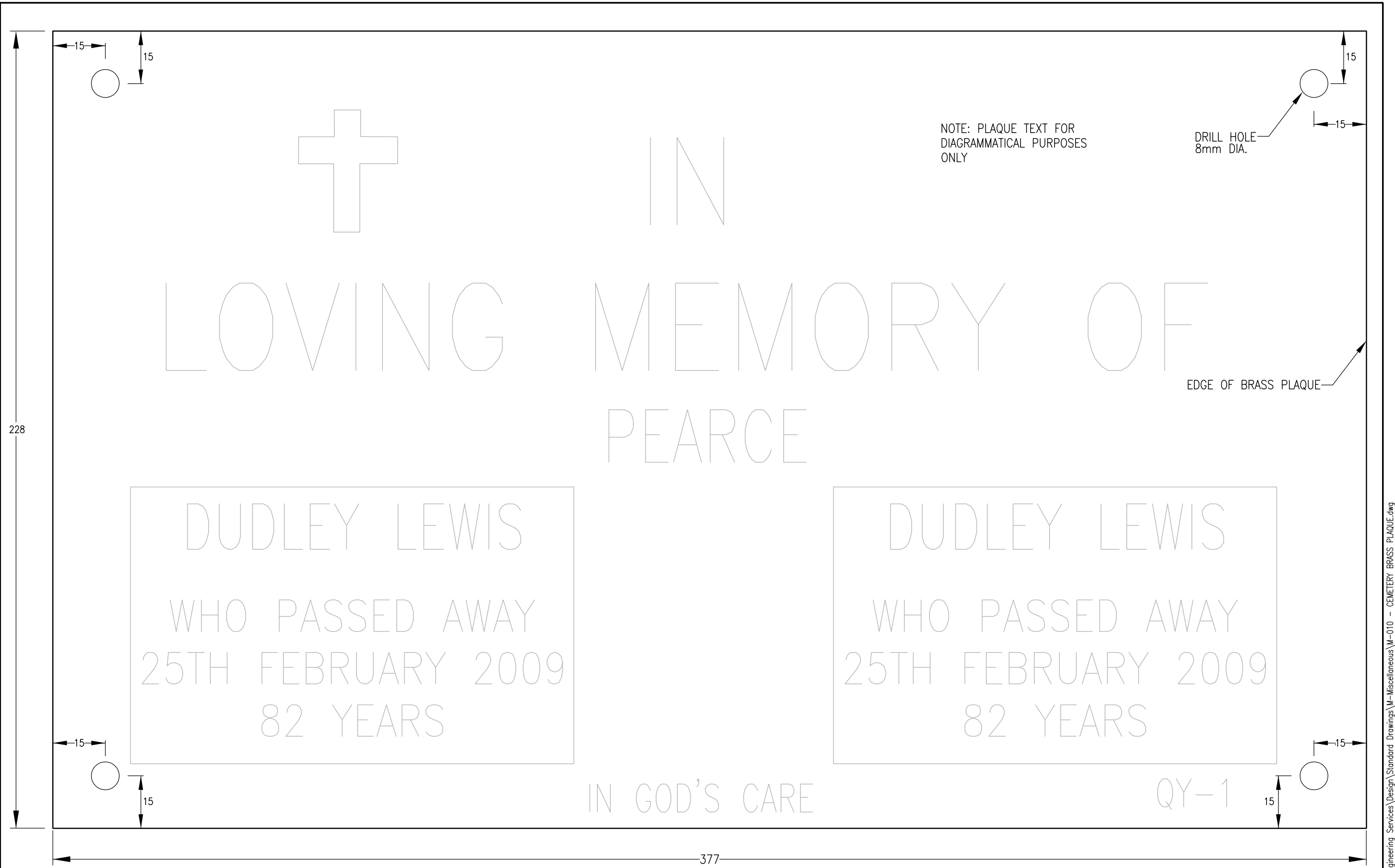
Computer Location S:\Engineering Services\Standard Drawings\M-Miscellaneous\WDRC Standard Drawings - Miscellaneous.dwg



530mm
DALBY CEMETERY HEADSTONE PLAQUE

			Field Book No.	DRAWN P. Blissner		Horiz. Section Scale 1:25 on A3	STANDARD DRAWING – MISCELLANEOUS DALBY CEMETERY HEADSTONE PLAQUE
		Level Book No.	DESIGNED T. Dredge				
		Datum	CHECKED S. Forbes				
			EXAMINED G. Parsons				
			RECOMMENDED S. Hegedus RPEQ. 5234 TECHNICAL SERVICES MANAGER				
B	Template change	P.E.B.	09.08.15	DATE 09/08/2015			
A	Original Issue			Job No./s	Works Order No.	Auxiliary Plan No's.	Plan No. M-008 No. 8 of 12 Plans Rev. B
Revisions		Drn by	Date				

Computer Location S:\Engineering Services\Standard Drawings\M-Miscellaneous\WDRC Standard Drawings - Miscellaneous.dwg



228

377

NOTE: PLAQUE TEXT FOR
DIAGRAMMATICAL PURPOSES
ONLY

DRILL HOLE
8mm DIA.

EDGE OF BRASS PLAQUE

DUDLEY LEWIS
WHO PASSED AWAY
25TH FEBRUARY 2009
82 YEARS

DUDLEY LEWIS
WHO PASSED AWAY
25TH FEBRUARY 2009
82 YEARS

IN GOD'S CARE

QY-1

Revisions	Drn by	Date
A	Original Issue	

Field Book No.	
Level Book No.	
Datum	

DRAWN	L. Porter
DESIGNED	T. Dredge
CHECKED	S. Forbes
EXAMINED	G. Parsons
RECOMMENDED	S. Hegedus RPEQ. 5234
TECHNICAL SERVICES MANAGER	
DATE	09/08/2015
Job No./s	Works Order No.

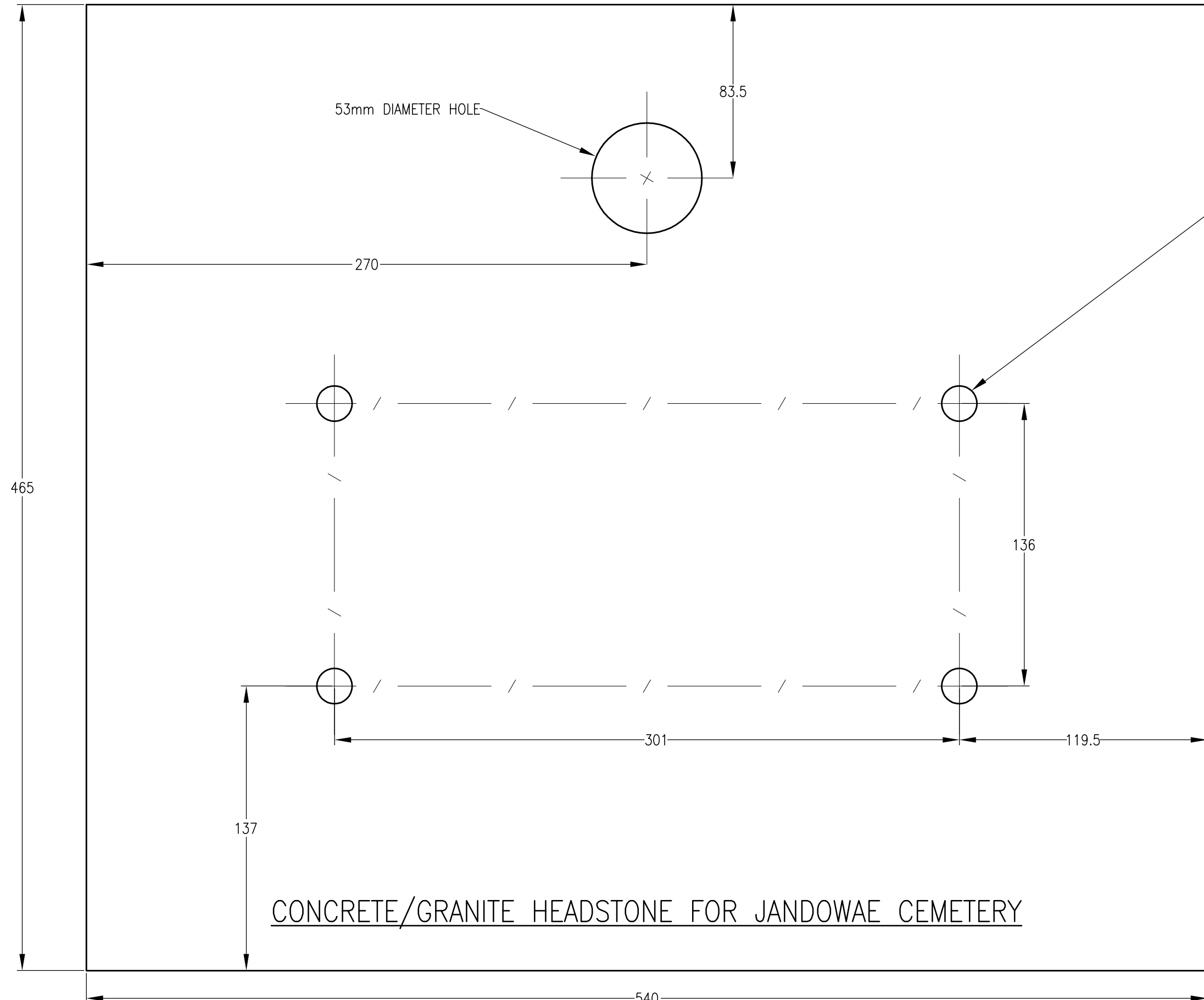
WESTERN DOWNS REGIONAL COUNCIL

Auxiliary Plan No.'s.

Horiz. Section	Scale 1:1 on A3	
Vert. Section	Scale 1:1 on A3	

STANDARD DRAWING – MISCELLANEOUS DALBY CEMETERY BRASS PLAQUE		
Plan No. M-009	No. 9 of 12 Plans	Rev. A

Computer Location S:\Engineering Services\Design\Standard Drawings\M-Miscellaneous\M-010 - CEMETERY BRASS PLAQUE.dwg



17mm DIAMETER HOLES

- NOTES**
1. ALL DIMENSIONS IN MILLIMETRES.
 2. HEADSTONE IS 40mm THICK.
 3. REFER TO M-010 FOR CONCRETING NOTES.

CONCRETE/GRANITE HEADSTONE FOR JANDOWAE CEMETERY

Revisions	Drn by	Date
A	Original Issue	

Field Book No.	
Level Book No.	
Datum	
DRAWN	S. Robertson
DESIGNED	S. Forbes
CHECKED	S. Forbes
EXAMINED	G. Parsons
RECOMMENDED	S. Hegedus RPEQ. 5234
TECHNICAL SERVICES MANAGER	
DATE	09/08/2015
Job No./s	
Works Order No.	

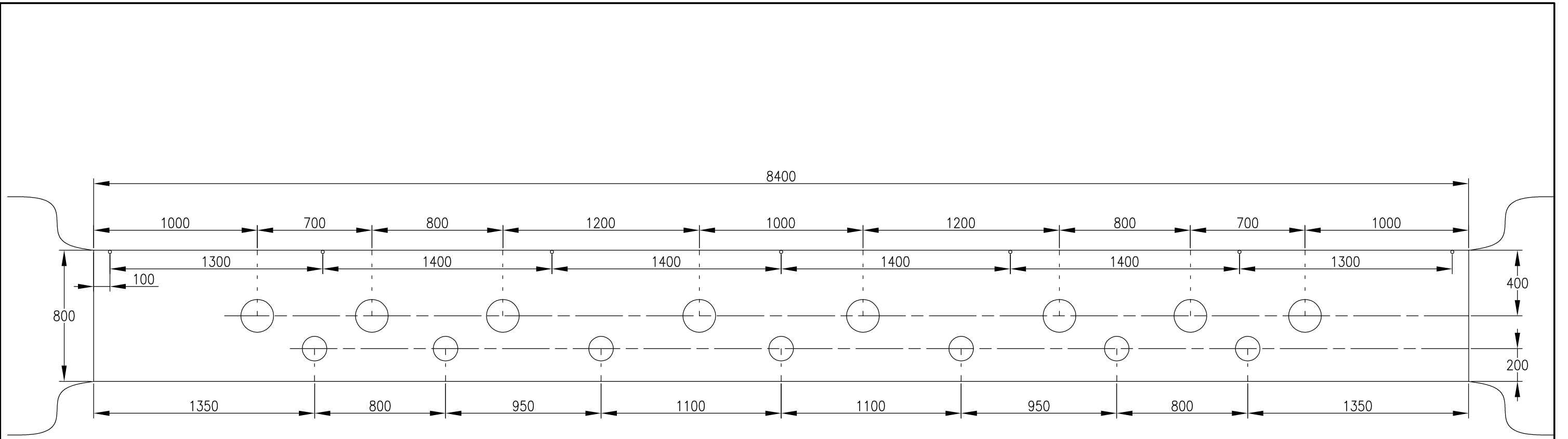
WESTERN DOWNS REGIONAL COUNCIL

Auxiliary Plan No.'s.

Horiz. Section	Scale 1:2	
on A3		
Vert. Section	Scale 1:	
on A3		

STANDARD DRAWING – MISCELLANEOUS
JANDOWAE CEMETERY
CONCRETE/GRANITE HEADSTONE

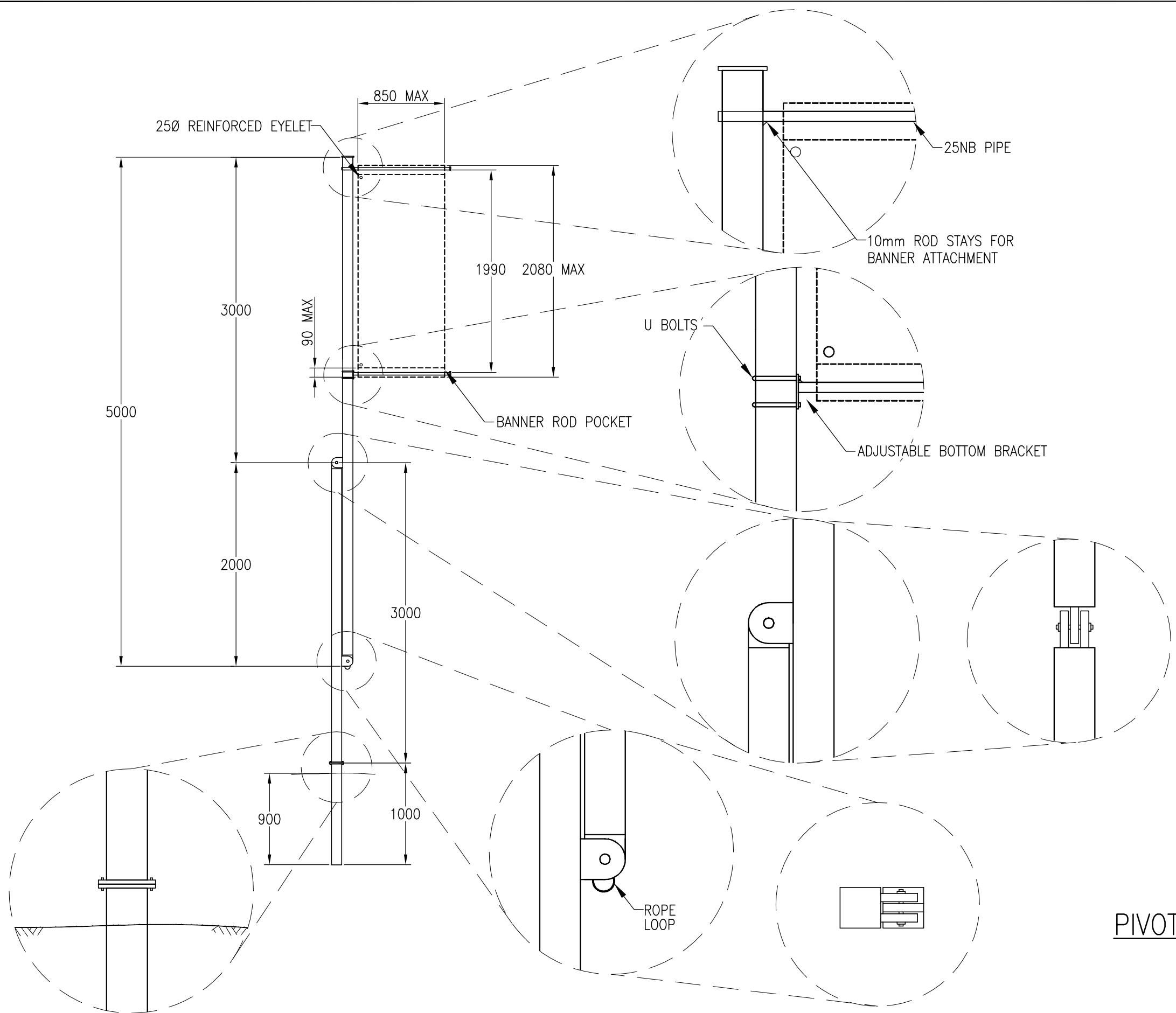
Plan No. *M-010* No. 10 of 12 Plans Rev. *A*



BANNER SPECIFICATIONS

1. ALL DIMENSIONS ARE IN MILLIMETRES.
2. EACH ROPE IS TO BE 16 METERS IN LENGTH, BANNER TO BE SEWN CENTRL SO THAT THERE ARE EQUAL LENGTHS OF ROPE AT EACH END.
3. CANVAS TO BE SEWN AT EACH END TO PREVENT FRAYING.
4. AIR HOLES – THE CENTRAL HOLES IN THE BANNER ARE TO BE 200mm IN DIAMETER AND LOWER HOLES TO BE 150mm IN DIAMETER.
5. SHACKLE PIN HOLES – 7 HOLES AT 20mm DIAMETER TO BE INSERTED IN BANNER BELOW TOP ROPE AS SHOWN IN ABOVE DRAWING.

Revisions	Drn by	Date	Field Book No.	DRAWN S. Robertson		Horiz. Section	STANDARD DRAWING – MISCELLANEOUS BANNER SPECIFICATIONS
			Level Book No.	DESIGNED S. Forbes		NTS	
			Datum	CHECKED S. Forbes		Vert. Section	
				EXAMINED G. Parsons		NTS	
				RECOMMENDED S. Hegedus RPEQ. 5234 TECHNICAL SERVICES MANAGER			
				DATE 09/08/2015			
				Job No./s	Works Order No.	Auxiliary Plan No's.	
A Original Issue							Plan No. <i>M-011</i> No. 11 of 12 Plans Rev. A



- NOTES**
1. ALL DIMENSIONS IN MILLIMETRES.
 2. 25Ø REINFORCED EYELET CENTRE TO BE PLACED 30mm FROM EDGE.
 3. ALL FLAGS OR BANNERS MUST MEET QUEENSLAND TRANSPORT REGULATIONS FOR BRIDGE BANNER AND FLAGS.
 4. TOTAL CIRCUMFERENCE OF BANNER ROD POCKET 180mm.
 5. ALL BOLTS 1/2 INCH, ALL PLATE LUGS 12mm.
 6. BANNER POLE ELEVATION IS SCALED AT 1:40 ON A3 AND ZOOMS ARE SCALED AT 1:10 ON A3.

PIVOTING BANNER POLES

			Field Book No.	DRAWN L. Porter			Elevation Scale 1:40 on A3		STANDARD DRAWING – MISCELLANEOUS PIVOTING BANNER POLES WITH BANNER
			Level Book No.	DESIGNED D. Henning			Zooms Scale 1:10 on A3		
			Datum	CHECKED S. Forbes					
				EXAMINED G. Parsons					
				RECOMMENDED S. Hegedus RPEQ. 5234					
				TECHNICAL SERVICES MANAGER					
				DATE 09/08/2015					
				Job No./s	Works Order No.	Auxiliary Plan No's.			
Revisions B Banner dimensions changed L.T.P. 09.08.15 A Original Issue			Drn by	Date					Plan No. M-012 No. 12 of 12 Plans Rev. B

Computer Location S:\Engineering Services\Design\Standard Drawings\M-Miscellaneous\WDRC Standard Drawings - Miscellaneous.dwg