

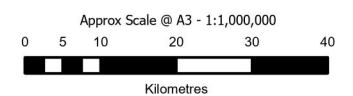
**DRAFT**

**DISCLAIMER:**  
While every care is taken to ensure the accuracy of this product, the Western Downs Regional Council does not make any representations or warranties about its accuracy, reliability, completeness or suitability for any particular purpose and disclaims all responsibility and all liability (including without limitation, liability in negligence) for all expenses, losses, damages (including indirect or consequential damage) and costs that may occur as a result of the product being inaccurate or incomplete in any way or for any reason.

Base material reproduced with the permission of the Director-General, Department of Resources  
© The State of Queensland (Department of Resources) [2023]

**DATA SOURCES:** WDRC, QSpatial  
Cadastral Boundaries - May 2023 (© State of Queensland (Department of Resources) 2021)  
MES - May 2023 (© State of Queensland (Department of Environment and Science) 2023)

Copyright Western Downs Regional Council 2023  
Date Generated : 26/06/2023  
Revision 3.0  
Coordinate System: GDA 1994 MGA Zone 56

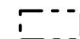




Legend

**Matters of State Environmental Significance (MSES)**

-  MSES - Wildlife Habitat
-  MSES - Highly Ecological Significance Wetlands
-  MSES - Protected Area
-  MSES - Regulated Vegetation

**Other**

-  Council Boundary
-  Property Boundary
-  Waterway

2

**DRAFT**

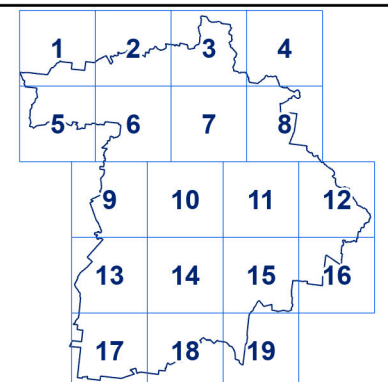
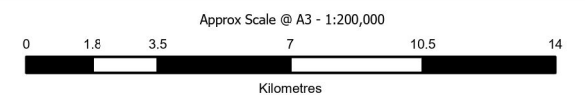
**DISCLAIMER:**

While every care is taken to ensure the accuracy of this product, the Western Downs Regional Council does not make any representations or warranties about its accuracy, reliability, completeness or suitability for any particular purpose and disclaims all responsibility and all liability (including without limitation, liability in negligence) for all expenses, losses, damages (including indirect or consequential damage) and costs that may occur as a result of the product being inaccurate or incomplete in any way or for any reason.

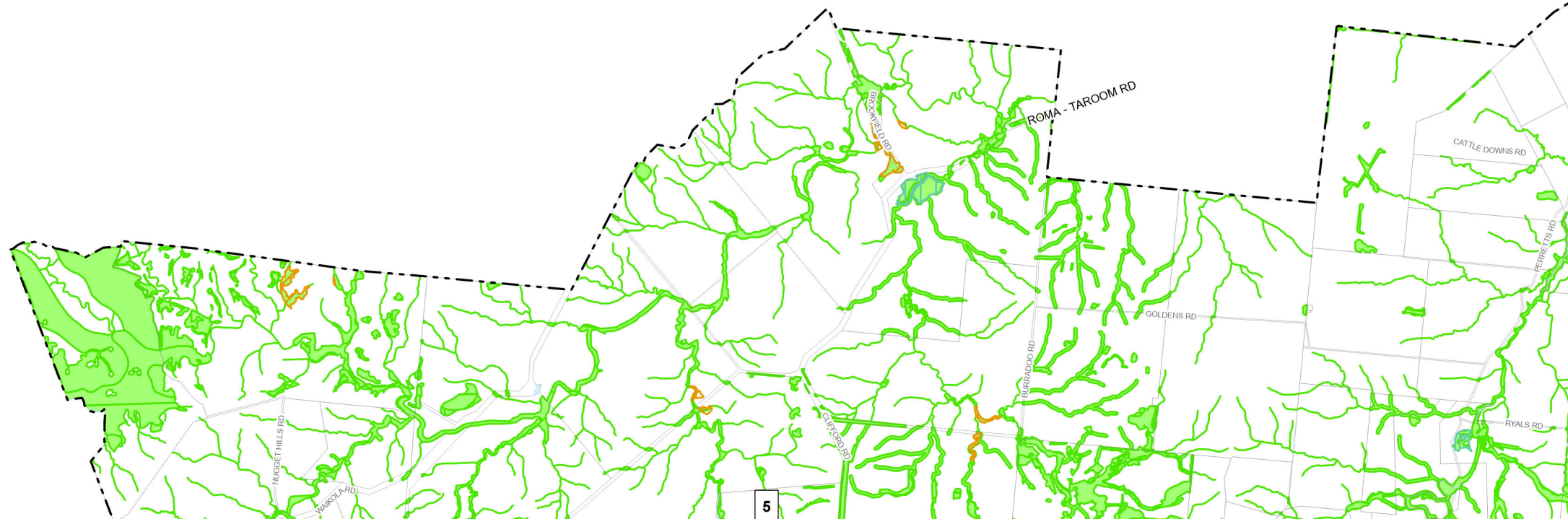
Base material reproduced with the permission of the Director-General, Department of Resources  
© The State of Queensland (Department of Resources) [2023]

**DATA SOURCES:** WDRC, QSpatial  
Cadastral Boundaries - May 2023 (© State of Queensland (Department of Resources) 2021)  
MES - May 2023 (© State of Queensland (Department of Environment and Science) 2023)

Copyright Western Downs Regional Council 2023  
Date Generated : 26/06/2023  
Revision 3.0  
Coordinate System: GDA 1994 MGA Zone 56



OM-002.01



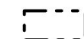




Legend

**Matters of State Environmental Significance (MSES)**

-  MSES - Wildlife Habitat
-  MSES - Highly Ecological Significance Wetlands
-  MSES - Protected Area
-  MSES - Regulated Vegetation

**Other**

-  Council Boundary
-  Property Boundary
-  Waterway

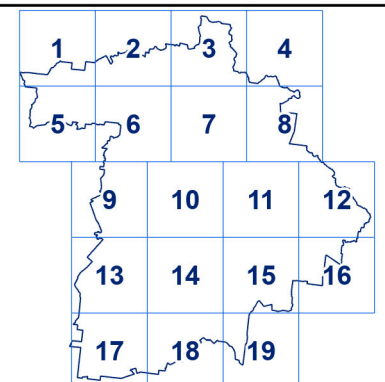
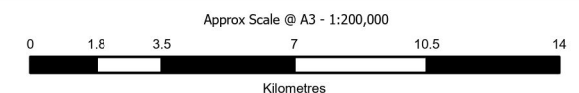
**DRAFT**

**DISCLAIMER:**  
While every care is taken to ensure the accuracy of this product, the Western Downs Regional Council does not make any representations or warranties about its accuracy, reliability, completeness or suitability for any particular purpose and disclaims all responsibility and all liability (including without limitation, liability in negligence) for all expenses, losses, damages (including indirect or consequential damage) and costs that may occur as a result of the product being inaccurate or incomplete in any way or for any reason.

Base material reproduced with the permission of the Director-General, Department of Resources  
© The State of Queensland (Department of Resources) [2023]

**DATA SOURCES:** WDRC, QSpatial  
Cadastral Boundaries - May 2023 (© State of Queensland (Department of Resources) 2021)  
MES - May 2023 (© State of Queensland (Department of Environment and Science) 2023)

Copyright Western Downs Regional Council 2023  
Date Generated : 26/06/2023  
Revision 3.0  
Coordinate System: GDA 1994 MGA Zone 56



OM-002.02



**Legend**

**Matters of State Environmental Significance (MSES)**

- MSES - Wildlife Habitat
- MSES - Highly Ecological Significance Wetlands
- MSES - Protected Area
- MSES - Regulated Vegetation

**Other**

- Council Boundary
- Property Boundary
- Waterway

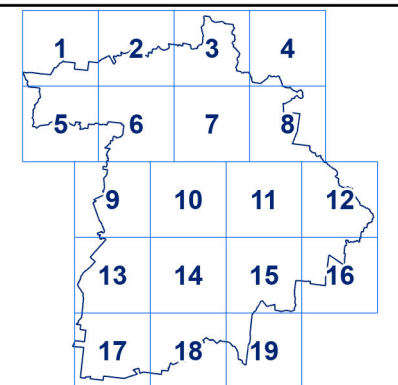
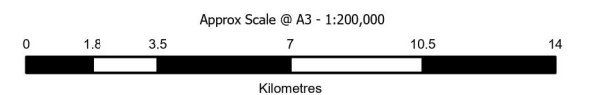
**DRAFT**

**DISCLAIMER:**  
While every care is taken to ensure the accuracy of this product, the Western Downs Regional Council does not make any representations or warranties about its accuracy, reliability, completeness or suitability for any particular purpose and disclaims all responsibility and all liability (including without limitation, liability in negligence) for all expenses, losses, damages (including indirect or consequential damage) and costs that may occur as a result of the product being inaccurate or incomplete in any way or for any reason.

Base material reproduced with the permission of the Director-General, Department of Resources © The State of Queensland (Department of Resources) [2023]

**DATA SOURCES:** WDRC, QSpatial  
Cadastral Boundaries - May 2023 (© State of Queensland (Department of Resources) 2021)  
MES - May 2023 (© State of Queensland (Department of Environment and Science) 2023)

Copyright Western Downs Regional Council 2023  
Date Generated : 26/06/2023  
Revision 3.0  
Coordinate System: GDA 1994 MGA Zone 56



OM-002.03



Legend

Matters of State Environmental Significance (MSES)

- MSES - Wildlife Habitat
- MSES - Highly Ecological Significance Wetlands
- MSES - Protected Area
- MSES - Regulated Vegetation

Other

- Council Boundary
- Property Boundary
- Waterway

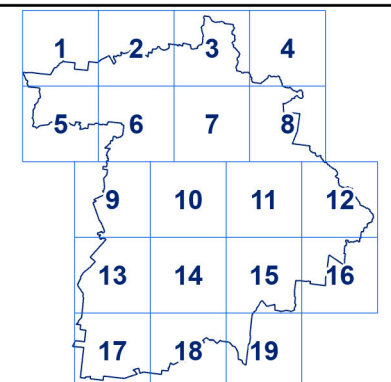
DRAFT

**DISCLAIMER:**  
While every care is taken to ensure the accuracy of this product, the Western Downs Regional Council does not make any representations or warranties about its accuracy, reliability, completeness or suitability for any particular purpose and disclaims all responsibility and all liability (including without limitation, liability in negligence) for all expenses, losses, damages (including indirect or consequential damage) and costs that may occur as a result of the product being inaccurate or incomplete in any way or for any reason.

Base material reproduced with the permission of the Director-General, Department of Resources  
© The State of Queensland (Department of Resources) [2023]

**DATA SOURCES:** WDRC, QSpatial  
Cadastral Boundaries - May 2023 (© State of Queensland (Department of Resources) 2021)  
MES - May 2023 (© State of Queensland (Department of Environment and Science) 2023)

Copyright Western Downs Regional Council 2023  
Date Generated : 26/06/2023  
Revision 3.0  
Coordinate System: GDA 1994 MGA Zone 56



OM-002.04

Legend

Matters of State Environmental Significance (MSES)

- MSES - Wildlife Habitat
- MSES - Highly Ecological Significance Wetlands
- MSES - Protected Area
- MSES - Regulated Vegetation

Other

- Council Boundary
- Property Boundary
- Waterway

DRAFT

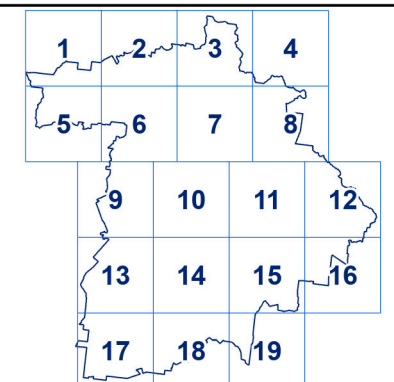
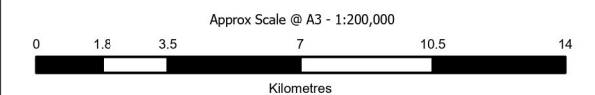
DISCLAIMER:

While every care is taken to ensure the accuracy of this product, the Western Downs Regional Council does not make any representations or warranties about its accuracy, reliability, completeness or suitability for any particular purpose and disclaims all responsibility and all liability (including without limitation, liability in negligence) for all expenses, losses, damages (including indirect or consequential damage) and costs that may occur as a result of the product being inaccurate or incomplete in any way or for any reason.

Base material reproduced with the permission of the Director-General, Department of Resources © The State of Queensland (Department of Resources) [2023]

**DATA SOURCES:** WDRC, QSpatial  
Cadastral Boundaries - May 2023 (© State of Queensland (Department of Resources) 2021)  
MES - May 2023 (© State of Queensland (Department of Environment and Science) 2023)

Copyright Western Downs Regional Council 2023  
Date Generated : 26/06/2023  
Revision 3.0  
Coordinate System: GDA 1994 MGA Zone 56

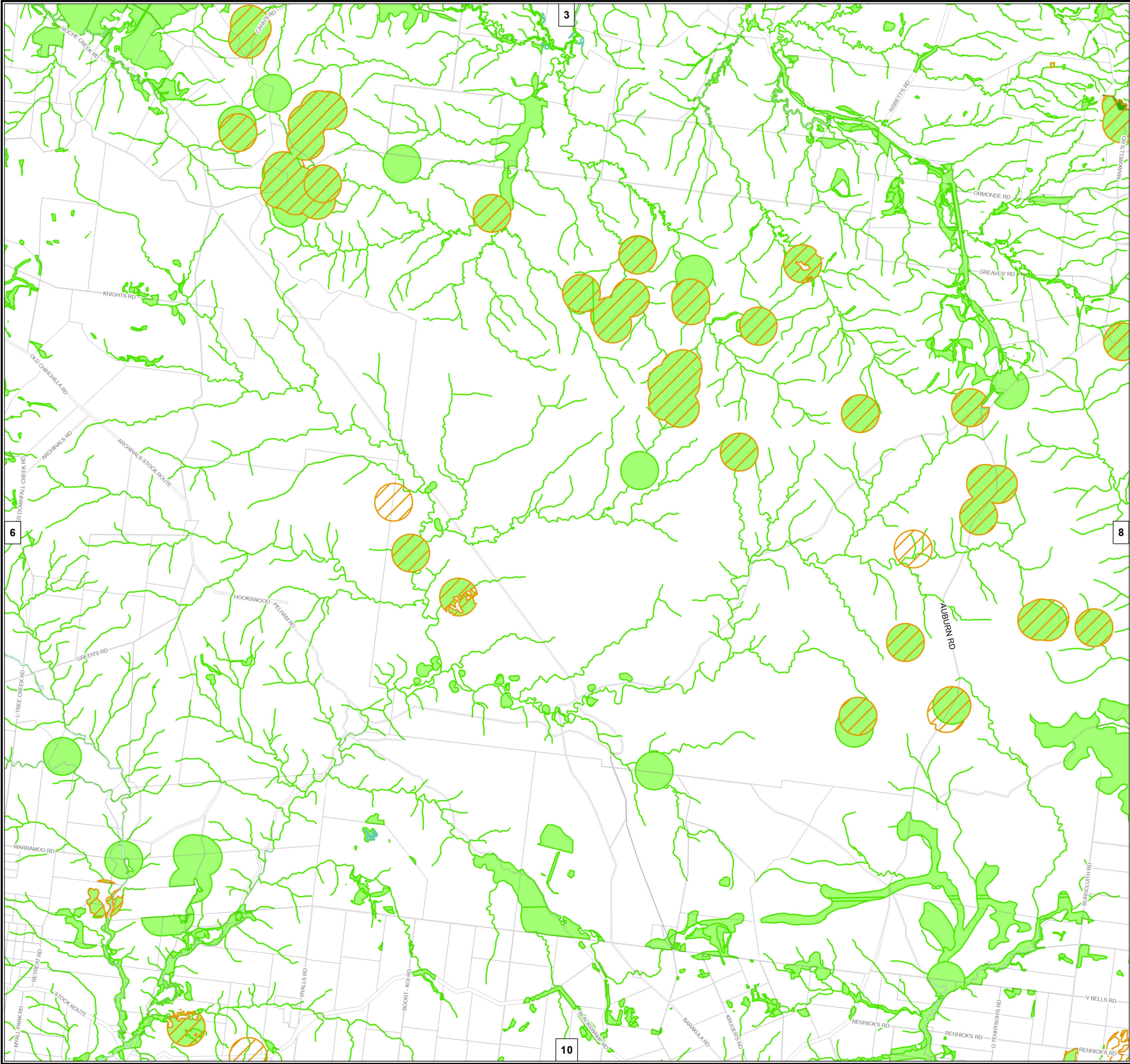


OM-002.05









**Legend**

**Matters of State Environmental Significance (MSES)**

- MSES - Wildlife Habitat
- MSES - Highly Ecological Significance Wetlands
- MSES - High Ecological Value Waters
- MSES - Protected Area
- MSES - Regulated Vegetation

**Other**

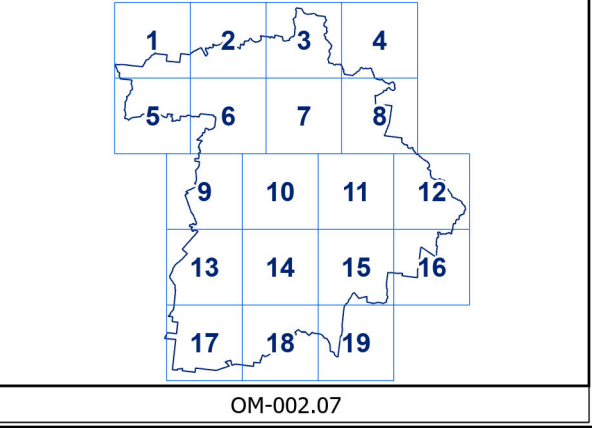
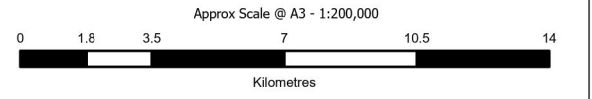
- Council Boundary
- Property Boundary
- Waterway

**DISCLAIMER:**  
While every care is taken to ensure the accuracy of this product, the Western Downs Regional Council does not make any representations or warranties about its accuracy, reliability, completeness or suitability for any particular purpose and disclaims all responsibility and all liability (including without limitation, liability in negligence) for all expenses, losses, damages (including indirect or consequential damage) and costs that may occur as a result of the product being inaccurate or incomplete in any way or for any reason.

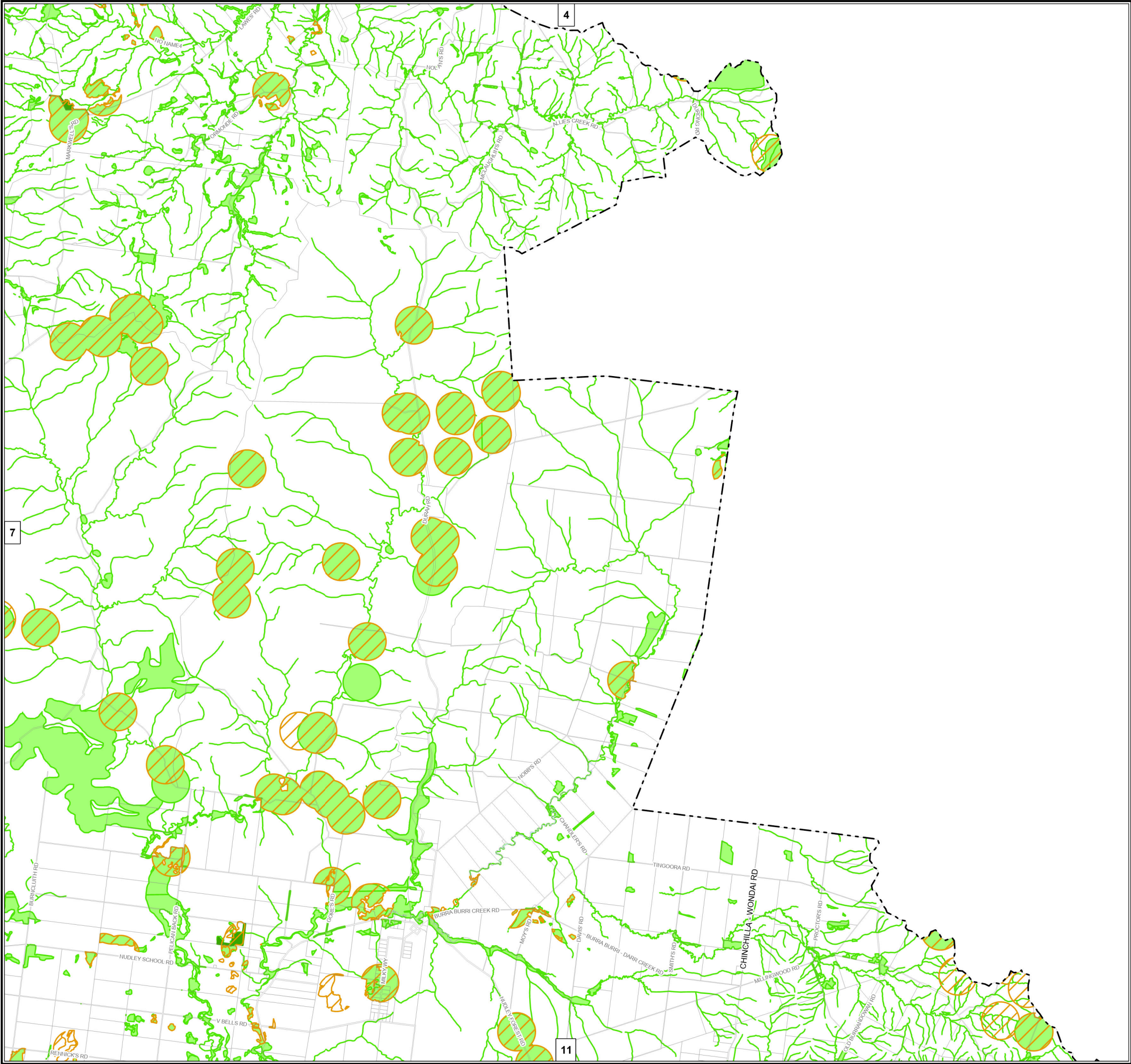
Base material reproduced with the permission of the Director-General, Department of Resources © The State of Queensland (Department of Resources) [2023]

**DATA SOURCES:** WDRC, QSpatial  
Cadastral Boundaries - May 2023 (© State of Queensland (Department of Resources) 2021)  
MES - May 2023 (© State of Queensland (Department of Environment and Science) 2023)

Copyright Western Downs Regional Council 2023  
Date Generated : 26/06/2023  
Revision 3.0  
Coordinate System: GDA 1994 MGA Zone 56







Legend

**Matters of State Environmental Significance (MSES)**

- MSES - Wildlife Habitat
- MSES - Highly Ecological Significance Wetlands
- MSES - Protected Area
- MSES - Regulated Vegetation

**Other**

- Council Boundary
- Property Boundary
- Waterway

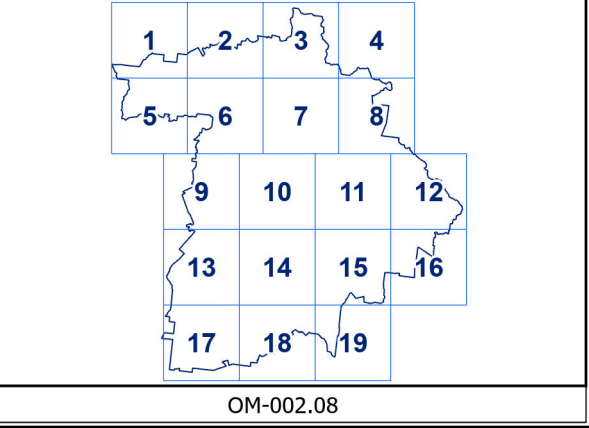
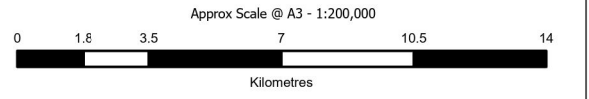
DRAFT

**DISCLAIMER:**  
While every care is taken to ensure the accuracy of this product, the Western Downs Regional Council does not make any representations or warranties about its accuracy, reliability, completeness or suitability for any particular purpose and disclaims all responsibility and all liability (including without limitation, liability in negligence) for all expenses, losses, damages (including indirect or consequential damage) and costs that may occur as a result of the product being inaccurate or incomplete in any way or for any reason.

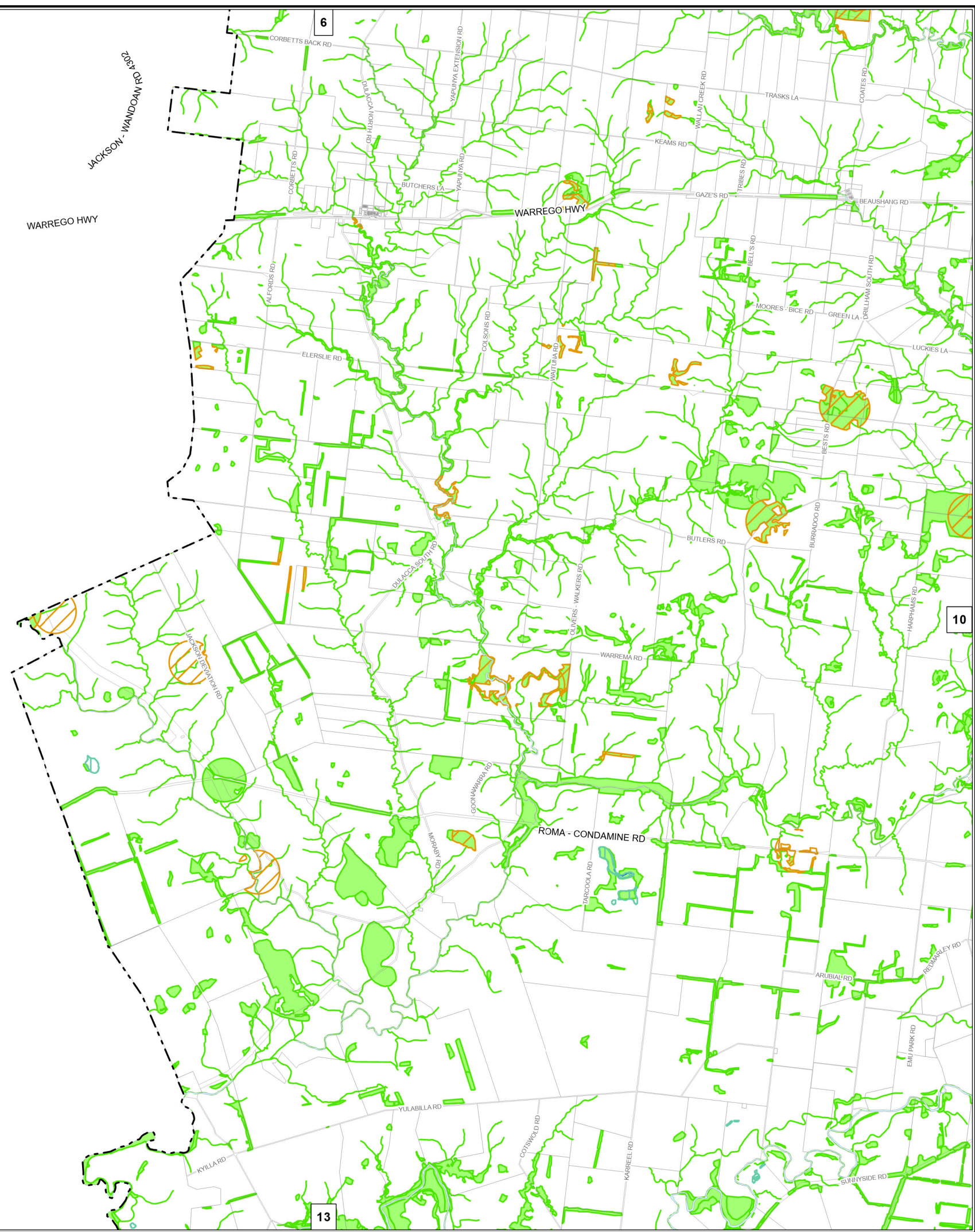
Base material reproduced with the permission of the Director-General, Department of Resources © The State of Queensland (Department of Resources) [2023]

**DATA SOURCES:** WDRC, QSpatial  
Cadastral Boundaries - May 2023 (© State of Queensland (Department of Resources) 2021)  
MES - May 2023 (© State of Queensland (Department of Environment and Science) 2023)

Copyright Western Downs Regional Council 2023  
Date Generated : 26/06/2023  
Revision 3.0  
Coordinate System: GDA 1994 MGA Zone 56







**Legend**

**Matters of State Environmental Significance (MSES)**

- MSES - Wildlife Habitat
- MSES - Highly Ecological Significance Wetlands
- MSES - High Ecological Value Waters
- MSES - Protected Area
- MSES - Regulated Vegetation

**Other**

- Council Boundary
- Property Boundary
- Waterway

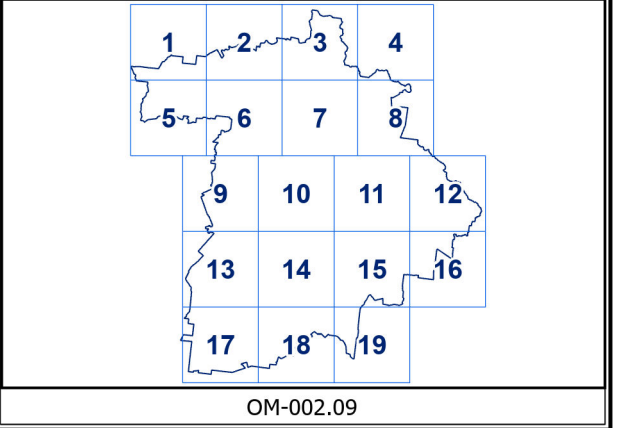
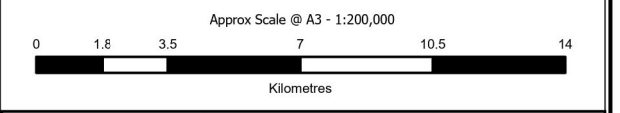
DRAFT

**DISCLAIMER:**  
While every care is taken to ensure the accuracy of this product, the Western Downs Regional Council does not make any representations or warranties about its accuracy, reliability, completeness or suitability for any particular purpose and disclaims all responsibility and all liability (including without limitation, liability in negligence) for all expenses, losses, damages (including indirect or consequential damage) and costs that may occur as a result of the product being inaccurate or incomplete in any way or for any reason.

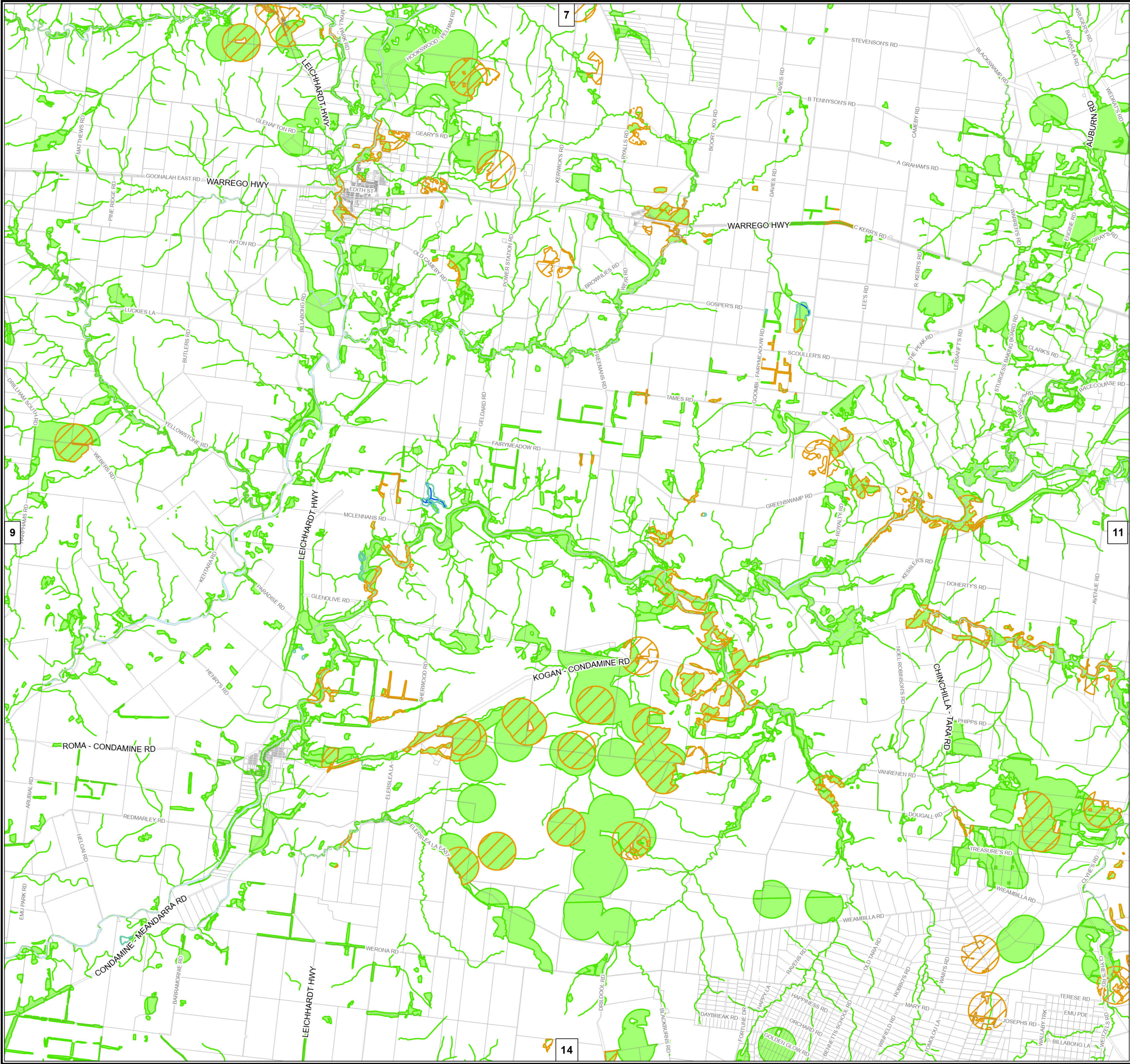
Base material reproduced with the permission of the Director-General, Department of Resources © The State of Queensland (Department of Resources) [2023]

**DATA SOURCES:** WDRC, QSpatial  
Cadastral Boundaries - May 2023 (© State of Queensland (Department of Resources) 2021)  
MES - May 2023 (© State of Queensland (Department of Environment and Science) 2023)

Copyright Western Downs Regional Council 2023  
Date Generated : 26/06/2023  
Revision 3.0  
Coordinate System: GDA 1994 MGA Zone 56







**Legend**

**Matters of State Environmental Significance (MSES)**

- MSES - Wildlife Habitat
- MSES - Highly Ecological Significance Wetlands
- MSES - High Ecological Value Waters
- MSES - Protected Area
- MSES - Regulated Vegetation

**Other**

- Council Boundary
- Property Boundary
- Waterway

DRAFT

**DISCLAIMER:**  
While every care is taken to ensure the accuracy of this product, the Western Downs Regional Council does not make any representations or warranties about its accuracy, reliability, completeness or suitability for any particular purpose and disclaims all responsibility and all liability (including without limitation, liability in negligence) for all expenses, losses, damages (including indirect or consequential damage) and costs that may occur as a result of the product being inaccurate or incomplete in any way or for any reason.

Base material reproduced with the permission of the Director-General, Department of Resources © The State of Queensland (Department of Resources) [2023]

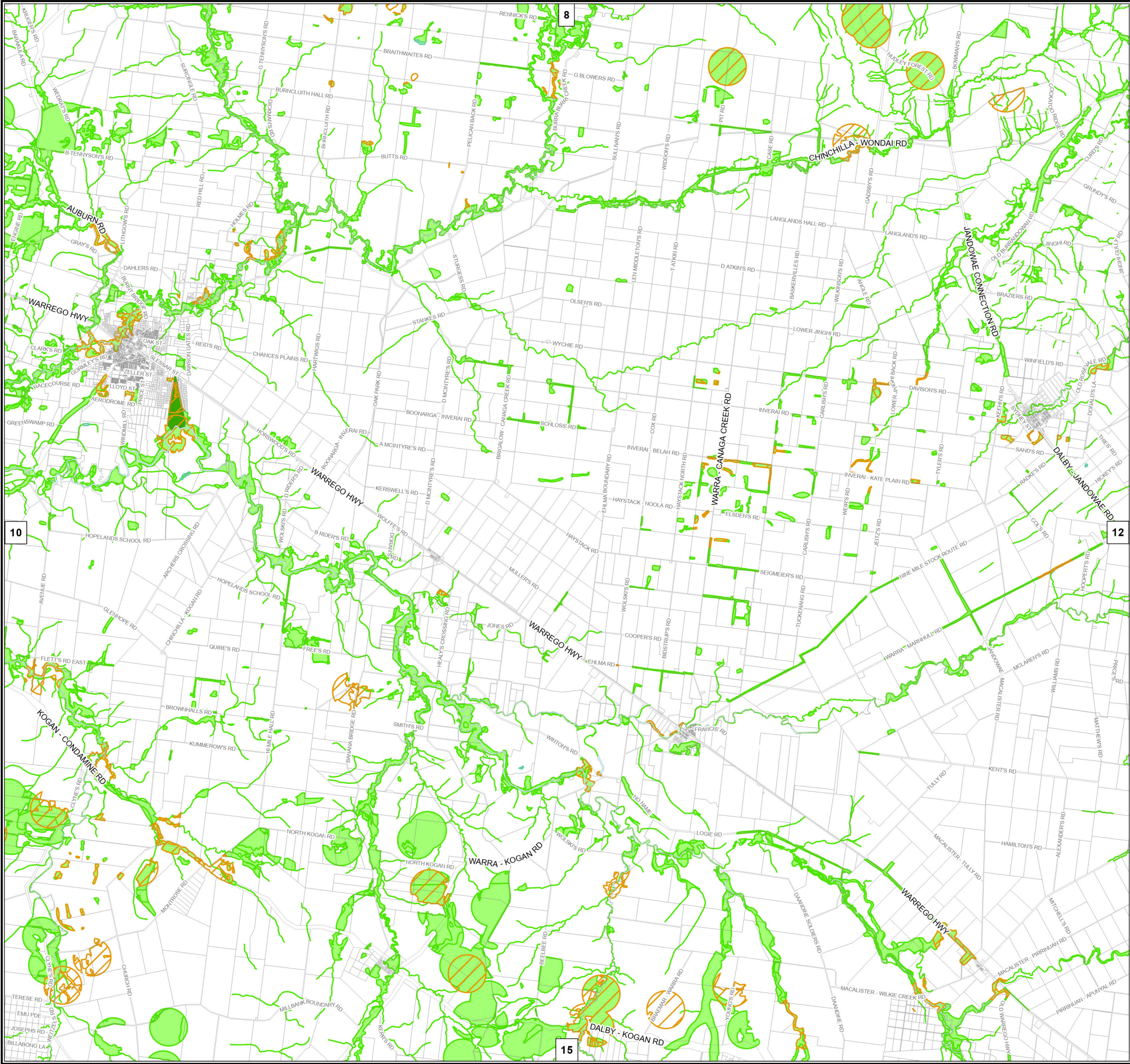
**DATA SOURCES:** WDRC, QSpatial  
Cadastral Boundaries - May 2023 (© State of Queensland (Department of Resources) 2021)  
MES - May 2023 (© State of Queensland (Department of Environment and Science) 2023)

Copyright Western Downs Regional Council 2023  
Date Generated : 26/06/2023  
Revision 3.0  
Coordinate System: GDA 1994 MGA Zone 56

Approx Scale @ A3 - 1:200,000

OM-002.10





Legend

Matters of State Environmental Significance (MSES)

MSES - Wildlife Habitat

MSES - Highly Ecological Significance Wetlands

MSES - Protected Area

MSES - Regulated Vegetation

Other

Council Boundary

Property Boundary

Waterway

DRAFT

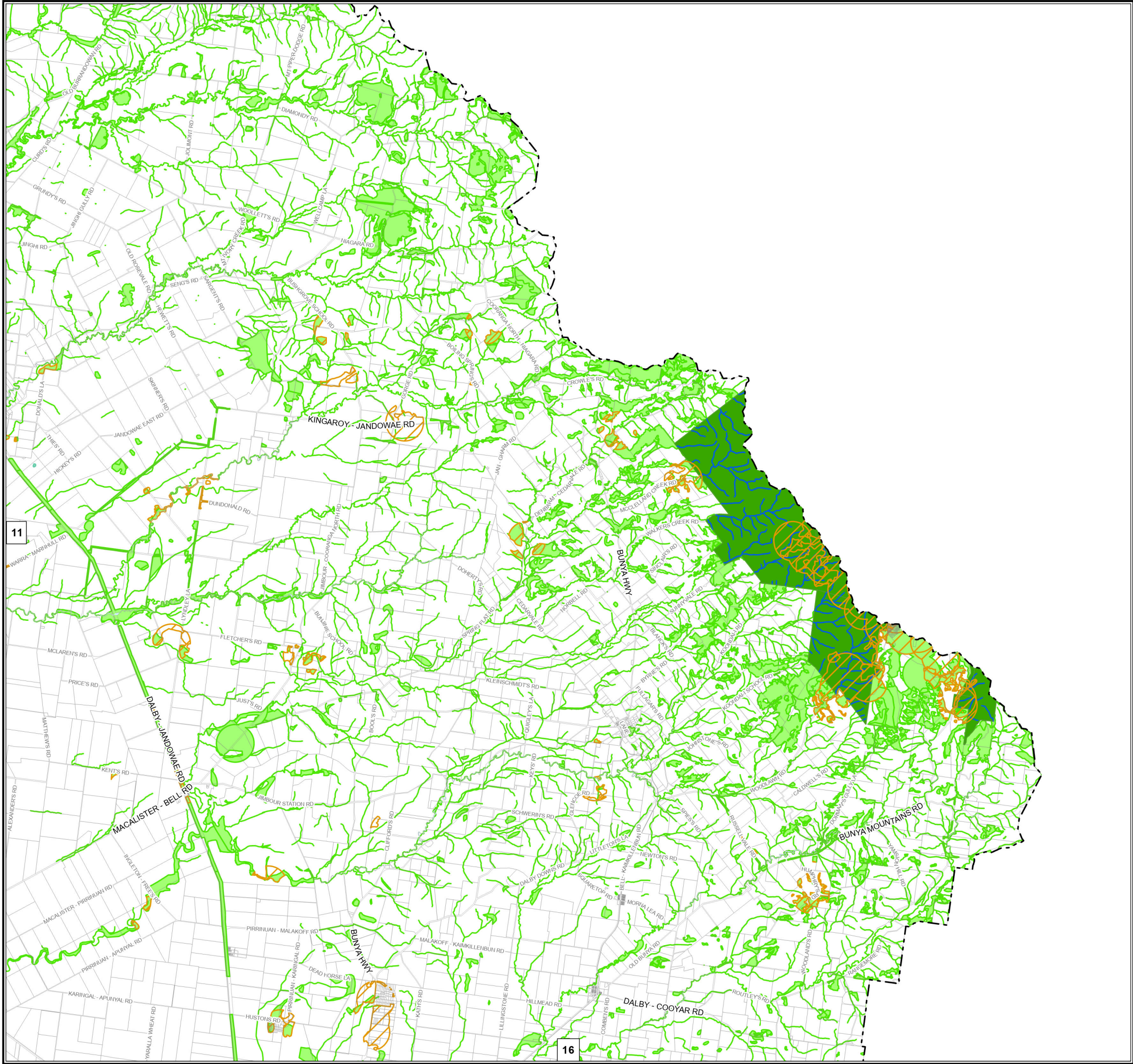
**DISCLAIMER:**  
While every care is taken to ensure the accuracy of this product, the Western Downs Regional Council does not make any representations or warranties about its accuracy, reliability, completeness or suitability for any particular purpose and disclaims all responsibility and all liability (including without limitation, liability in negligence) for all expenses, losses, damages (including indirect or consequential damage) and costs that may occur as a result of the product being inaccurate or incomplete in any way or for any reason.  
  
Base material reproduced with the permission of the Director-General, Department of Resources © The State of Queensland (Department of Resources) [2023]  
  
**DATA SOURCES:** WDRC, QSpatial  
Cadastral Boundaries - May 2023 (© State of Queensland (Department of Resources) 2021)  
MES - May 2023 (© State of Queensland (Department of Environment and Science) 2023)

Copyright Western Downs Regional Council 2023  
Date Generated : 26/06/2023  
Revision 3.0  
Coordinate System: GDA 1994 MGA Zone 56

Approx Scale @ A3 - 1:200,000

OM-002.11





**Legend**

**Matters of State Environmental Significance (MSES)**

MSES - Wildlife Habitat

MSES - Highly Ecological Significance Wetlands

MSES - Protected Area

MSES - Regulated Vegetation

**Other**

Council Boundary

Property Boundary

Waterway

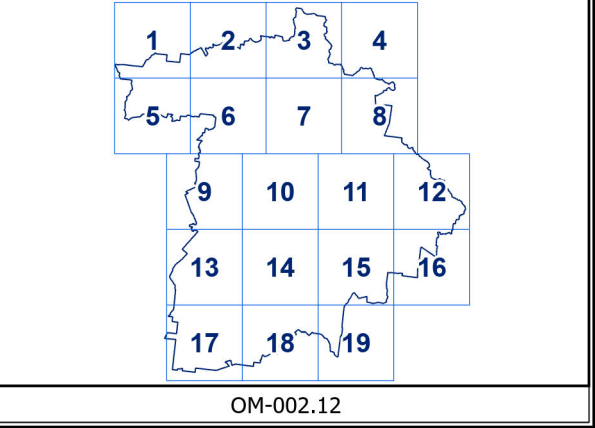
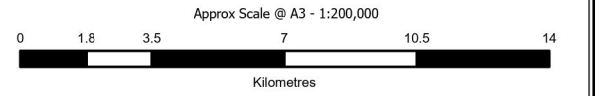
DRAFT

**DISCLAIMER:**  
While every care is taken to ensure the accuracy of this product, the Western Downs Regional Council does not make any representations or warranties about its accuracy, reliability, completeness or suitability for any particular purpose and disclaims all responsibility and all liability (including without limitation, liability in negligence) for all expenses, losses, damages (including indirect or consequential damage) and costs that may occur as a result of the product being inaccurate or incomplete in any way or for any reason.

Base material reproduced with the permission of the Director-General, Department of Resources © The State of Queensland (Department of Resources) [2023]

**DATA SOURCES:** WDRC, QSpatial  
Cadastral Boundaries - May 2023 (© State of Queensland (Department of Resources) 2021)  
MES - May 2023 (© State of Queensland (Department of Environment and Science) 2023)

Copyright Western Downs Regional Council 2023  
Date Generated : 26/06/2023  
Revision 3.0  
Coordinate System: GDA 1994 MGA Zone 56





**Legend**

**Matters of State Environmental Significance (MSES)**

- MSES - Wildlife Habitat
- MSES - Highly Ecological Significance Wetlands
- MSES - Protected Area
- MSES - Regulated Vegetation

**Other**

- Council Boundary
- Property Boundary
- Waterway

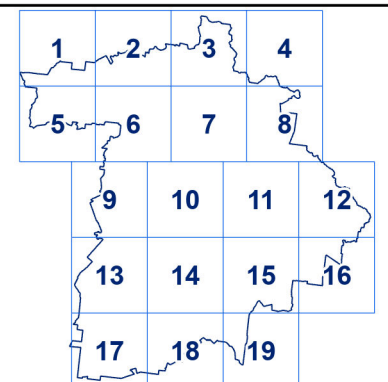
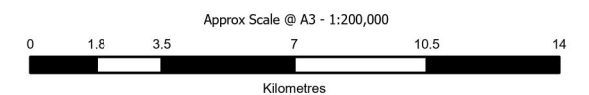
**DRAFT**

**DISCLAIMER:**  
While every care is taken to ensure the accuracy of this product, the Western Downs Regional Council does not make any representations or warranties about its accuracy, reliability, completeness or suitability for any particular purpose and disclaims all responsibility and all liability (including without limitation, liability in negligence) for all expenses, losses, damages (including indirect or consequential damage) and costs that may occur as a result of the product being inaccurate or incomplete in any way or for any reason.

Base material reproduced with the permission of the Director-General, Department of Resources  
© The State of Queensland (Department of Resources) [2023]

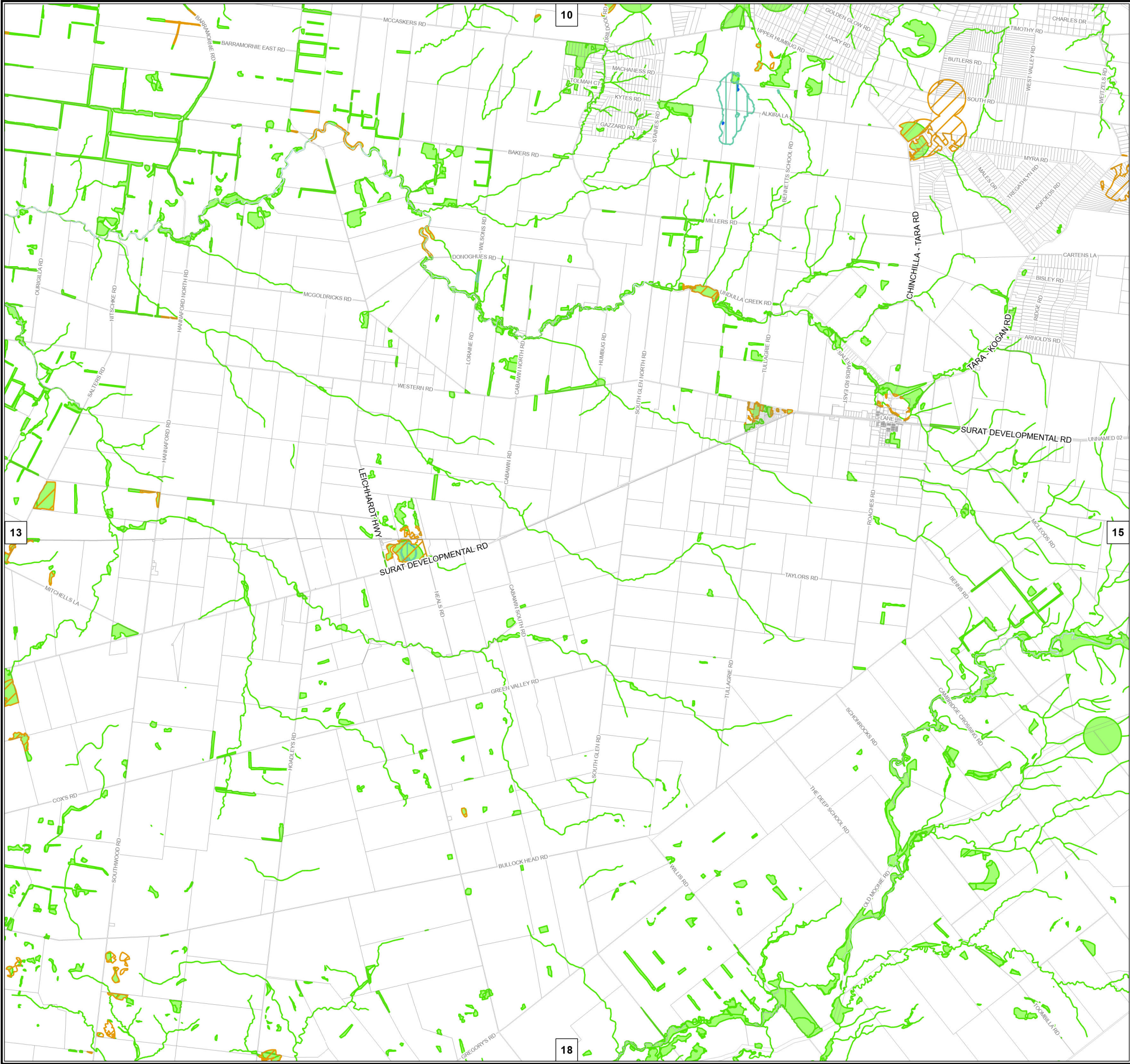
**DATA SOURCES:** WDRC, QSpatial  
Cadastral Boundaries - May 2023 (© State of Queensland (Department of Resources) 2021)  
MES - May 2023 (© State of Queensland (Department of Environment and Science) 2023)

Copyright Western Downs Regional Council 2023  
Date Generated : 26/06/2023  
Revision 3.0  
Coordinate System: GDA 1994 MGA Zone 56



OM-002.13





**Legend**

**Matters of State Environmental Significance (MSES)**

- MSES - Wildlife Habitat
- MSES - Highly Ecological Significance Wetlands
- MSES - High Ecological Value Waters
- MSES - Protected Area
- MSES - Regulated Vegetation

**Other**

- Council Boundary
- Property Boundary
- Waterway

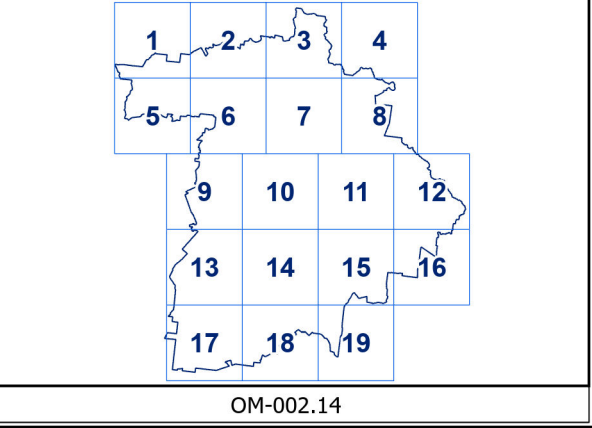
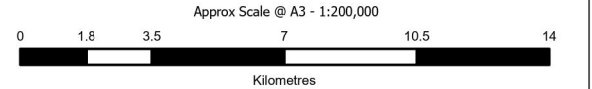
DRAFT

**DISCLAIMER:**  
While every care is taken to ensure the accuracy of this product, the Western Downs Regional Council does not make any representations or warranties about its accuracy, reliability, completeness or suitability for any particular purpose and disclaims all responsibility and all liability (including without limitation, liability in negligence) for all expenses, losses, damages (including indirect or consequential damage) and costs that may occur as a result of the product being inaccurate or incomplete in any way or for any reason.

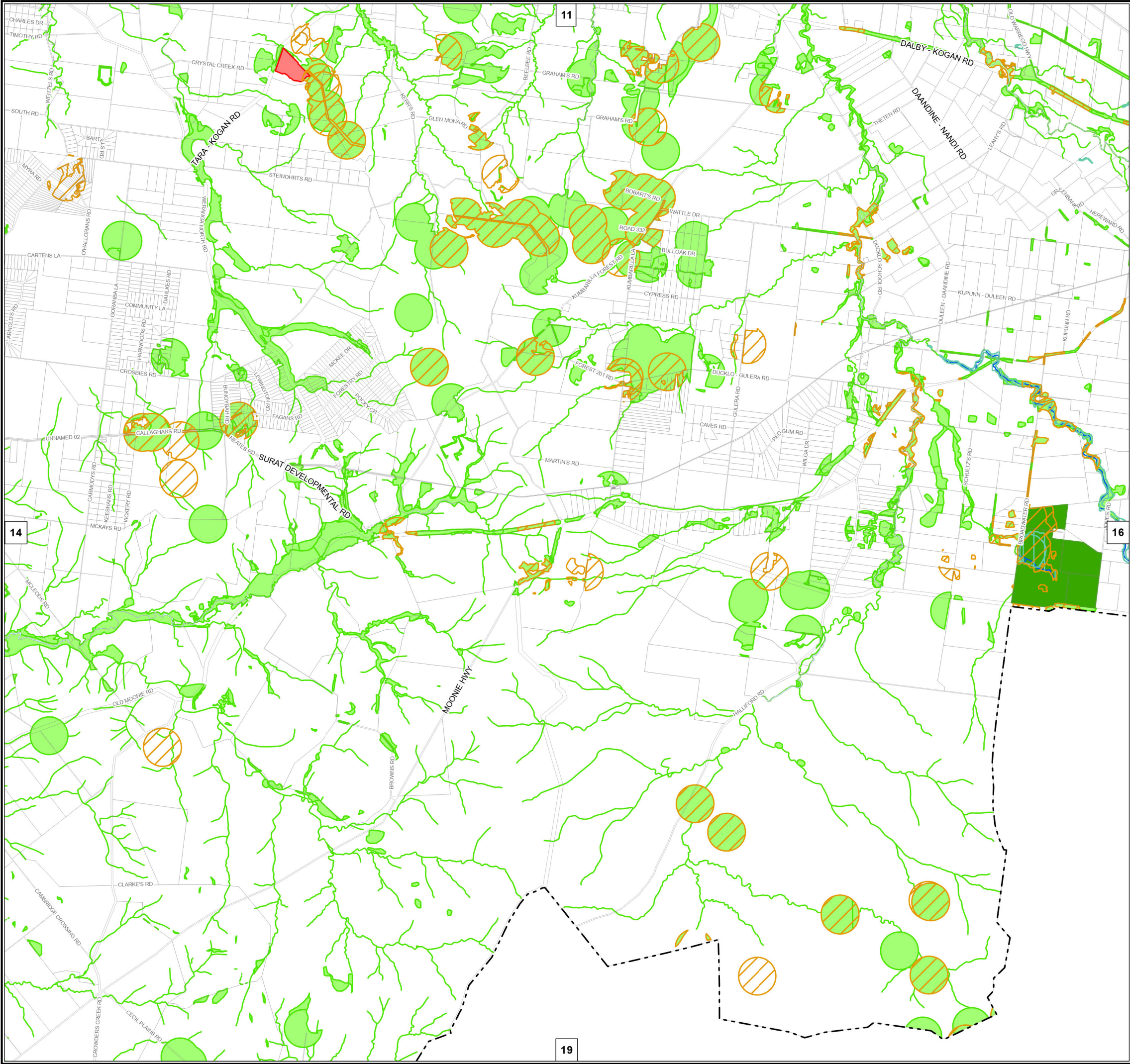
Base material reproduced with the permission of the Director-General, Department of Resources © The State of Queensland (Department of Resources) [2023]

**DATA SOURCES:** WDRC, QSpatial  
Cadastral Boundaries - May 2023 (© State of Queensland (Department of Resources) 2021)  
MES - May 2023 (© State of Queensland (Department of Environment and Science) 2023)

Copyright Western Downs Regional Council 2023  
Date Generated : 26/06/2023  
Revision 3.0  
Coordinate System: GDA 1994 MGA Zone 56







**Legend**

**Matters of State Environmental Significance (MSES)**

- MSES - Wildlife Habitat
- MSES - Highly Ecological Significance Wetlands
- MSES - High Ecological Value Waters
- MSES - Legally Secured Offset Area
- MSES - Protected Area
- MSES - Regulated Vegetation

**Other**

- Council Boundary
- Property Boundary
- Waterway

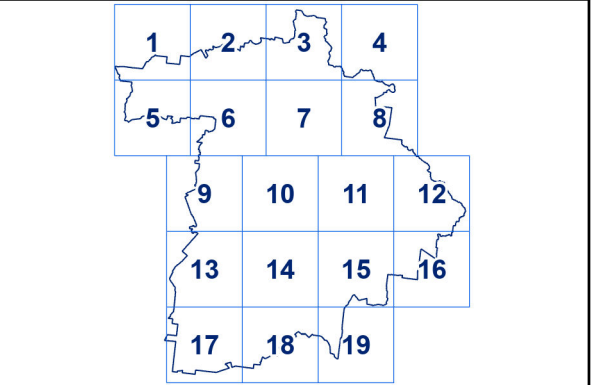
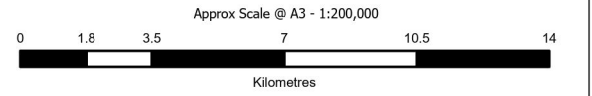
DRAFT

**DISCLAIMER:**  
While every care is taken to ensure the accuracy of this product, the Western Downs Regional Council does not make any representations or warranties about its accuracy, reliability, completeness or suitability for any particular purpose and disclaims all responsibility and all liability (including without limitation, liability in negligence) for all expenses, losses, damages (including indirect or consequential damage) and costs that may occur as a result of the product being inaccurate or incomplete in any way or for any reason.

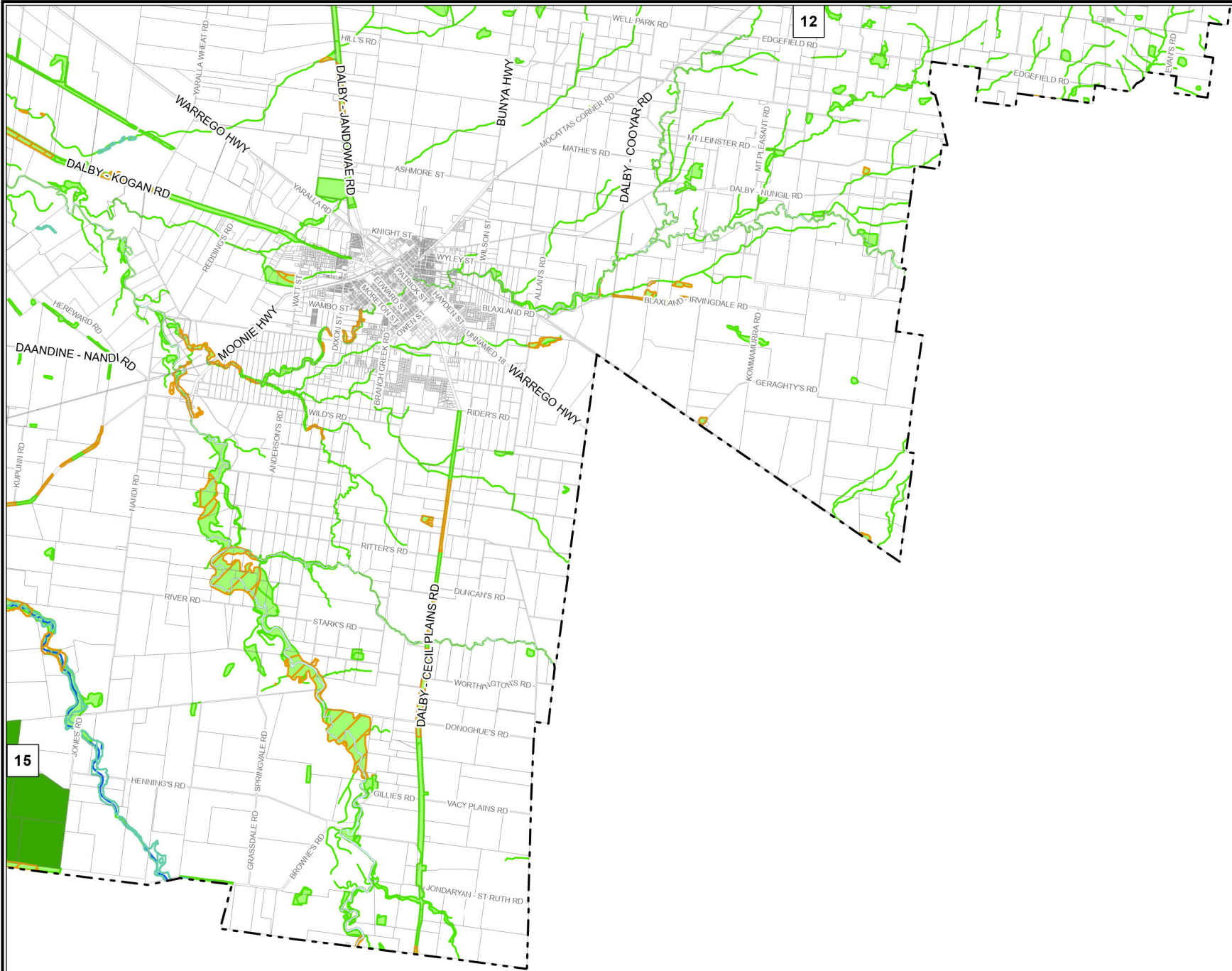
Base material reproduced with the permission of the Director-General, Department of Resources © The State of Queensland (Department of Resources) [2023]

**DATA SOURCES:** WDRC, QSpatial  
Cadastral Boundaries - May 2023 (© State of Queensland (Department of Resources) 2021)  
MES - May 2023 (© State of Queensland (Department of Environment and Science) 2023)

Copyright Western Downs Regional Council 2023  
Date Generated : 26/06/2023  
Revision 3.0  
Coordinate System: GDA 1994 MGA Zone 56







Legend

**Matters of State Environmental Significance (MSES)**

- MSES - Wildlife Habitat
- MSES - Highly Ecological Significance Wetlands
- MSES - High Ecological Value Waters
- MSES - Protected Area
- MSES - Regulated Vegetation

**Other**

- Council Boundary
- Property Boundary
- Waterway

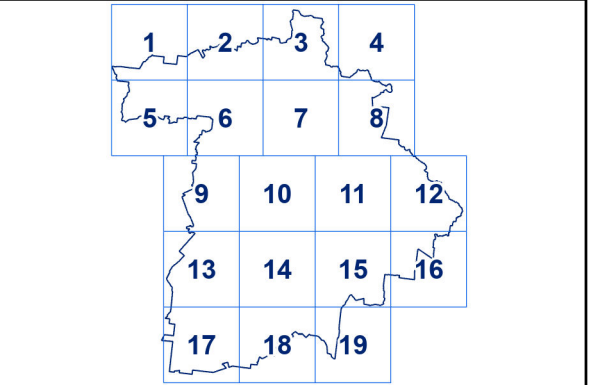
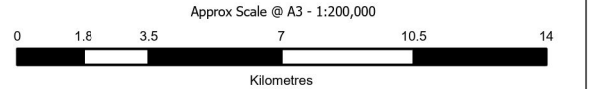
DRAFT

**DISCLAIMER:**  
While every care is taken to ensure the accuracy of this product, the Western Downs Regional Council does not make any representations or warranties about its accuracy, reliability, completeness or suitability for any particular purpose and disclaims all responsibility and all liability (including without limitation, liability in negligence) for all expenses, losses, damages (including indirect or consequential damage) and costs that may occur as a result of the product being inaccurate or incomplete in any way or for any reason.

Base material reproduced with the permission of the Director-General, Department of Resources © The State of Queensland (Department of Resources) [2023]

**DATA SOURCES:** WDRC, QSpatial  
Cadastral Boundaries - May 2023 (© State of Queensland (Department of Resources) 2021)  
MES - May 2023 (© State of Queensland (Department of Environment and Science) 2023)

Copyright Western Downs Regional Council 2023  
Date Generated : 26/06/2023  
Revision 3.0  
Coordinate System: GDA 1994 MGA Zone 56





Legend

Matters of State Environmental Significance (MSES)

MSES - Wildlife Habitat

MSES - Highly Ecological Significance Wetlands

MSES - Protected Area

MSES - Regulated Vegetation

Other

Council Boundary

Property Boundary

Waterway

DRAFT

**DISCLAIMER:**  
While every care is taken to ensure the accuracy of this product, the Western Downs Regional Council does not make any representations or warranties about its accuracy, reliability, completeness or suitability for any particular purpose and disclaims all responsibility and all liability (including without limitation, liability in negligence) for all expenses, losses, damages (including indirect or consequential damage) and costs that may occur as a result of the product being inaccurate or incomplete in any way or for any reason.  
  
Base material reproduced with the permission of the Director-General, Department of Resources © The State of Queensland (Department of Resources) [2023]  
  
**DATA SOURCES:** WDRC, QSpatial  
Cadastral Boundaries - May 2023 (© State of Queensland (Department of Resources) 2021)  
MES - May 2023 (© State of Queensland (Department of Environment and Science) 2023)

Copyright Western Downs Regional Council 2023  
Date Generated : 26/06/2023  
Revision 3.0  
Coordinate System: GDA 1994 MGA Zone 56

N

0 1.8 3.5 7 10.5 14  
Kilometres

1 2 3 4

5 6 7 8

9 10 11 12

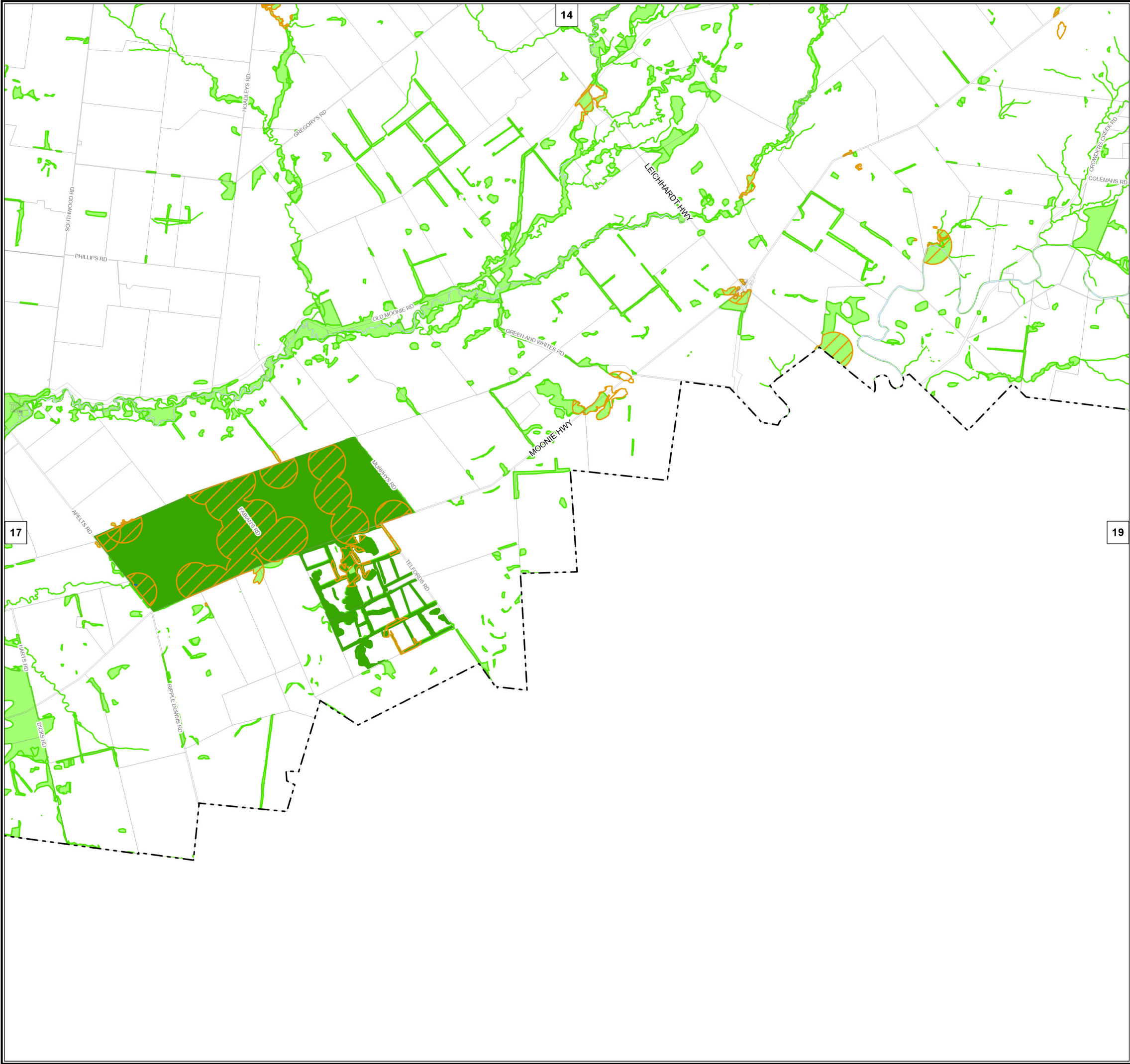
13 14 15 16

17 18 19

OM-002.17

The main map displays a geographical area with various land use designations. A network of roads is shown, including Green Hills Rd, Yoothappa Rd, Meandarra - Talwood Rd, Moonie Hwy, and others. The map is overlaid with a grid of property boundaries. Several areas are highlighted in green, indicating regulated vegetation or protected areas. A dashed line represents the council boundary. A red circle with a diagonal line is placed over a specific area in the lower right. The map is labeled with numbers 13 and 18 in the top right corner.





**Legend**

**Matters of State Environmental Significance (MSES)**

- MSES - Wildlife Habitat
- MSES - Highly Ecological Significance Wetlands
- MSES - Protected Area
- MSES - Regulated Vegetation

**Other**

- Council Boundary
- Property Boundary
- Waterway

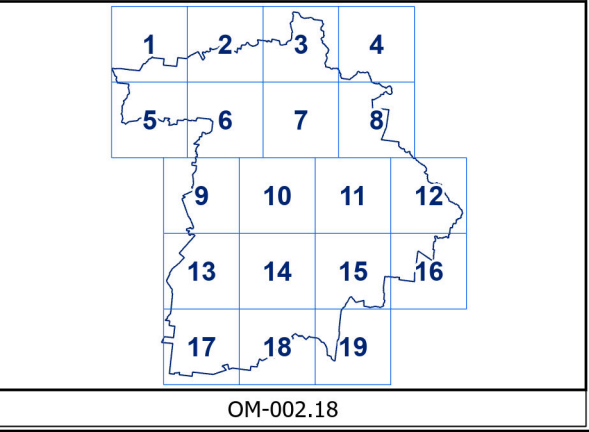
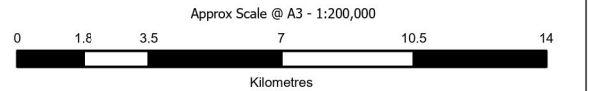
DRAFT

**DISCLAIMER:**  
While every care is taken to ensure the accuracy of this product, the Western Downs Regional Council does not make any representations or warranties about its accuracy, reliability, completeness or suitability for any particular purpose and disclaims all responsibility and all liability (including without limitation, liability in negligence) for all expenses, losses, damages (including indirect or consequential damage) and costs that may occur as a result of the product being inaccurate or incomplete in any way or for any reason.

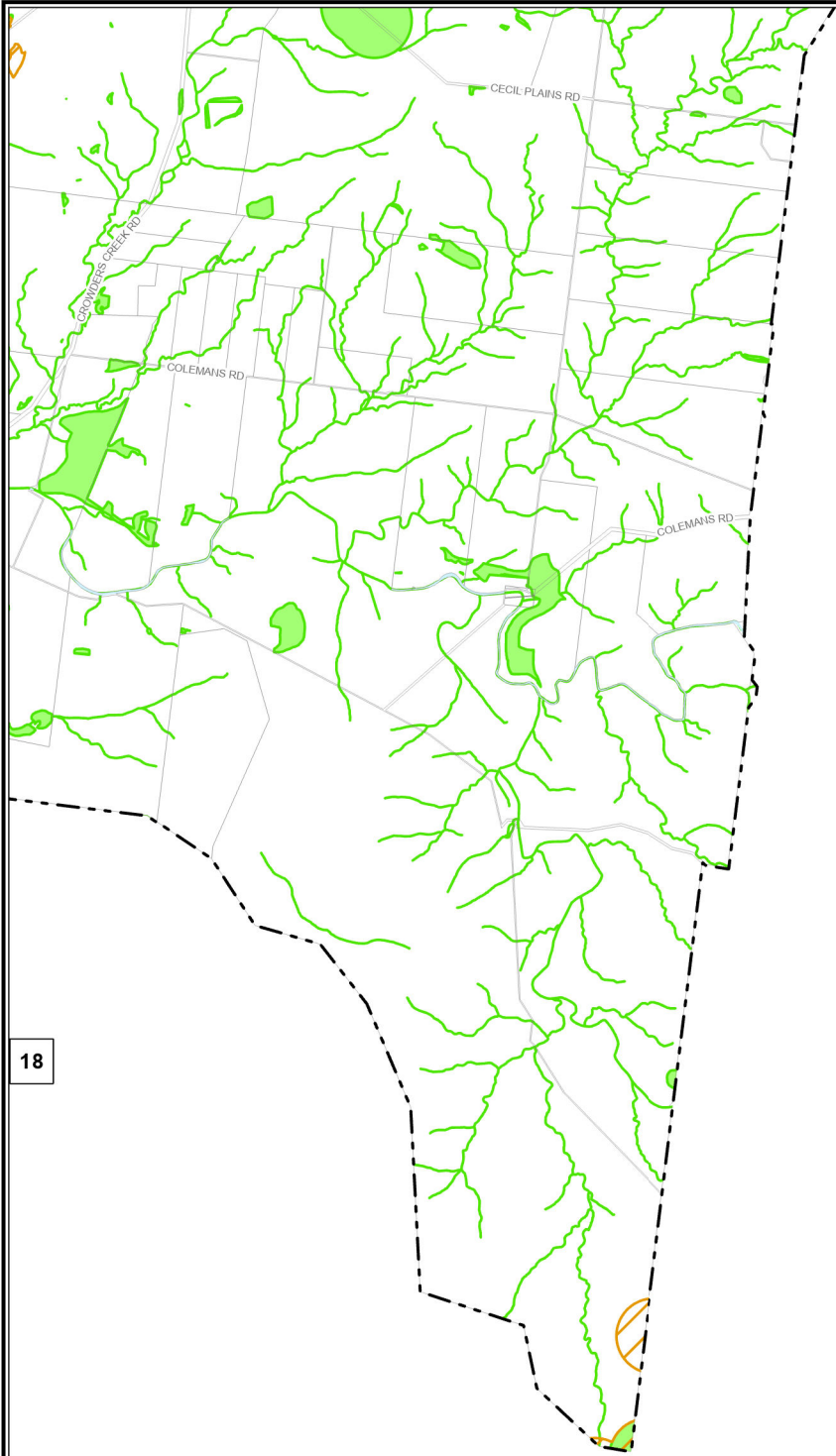
Base material reproduced with the permission of the Director-General, Department of Resources © The State of Queensland (Department of Resources) [2023]

**DATA SOURCES:** WDRC, QSpatial  
Cadastral Boundaries - May 2023 (© State of Queensland (Department of Resources) 2021)  
MES - May 2023 (© State of Queensland (Department of Environment and Science) 2023)

Copyright Western Downs Regional Council 2023  
Date Generated : 26/06/2023  
Revision 3.0  
Coordinate System: GDA 1994 MGA Zone 56







15

18

Legend

**Matters of State Environmental Significance (MSES)**

-  MSES - Wildlife Habitat
-  MSES - Highly Ecological Significance Wetlands
-  MSES - Protected Area
-  MSES - Regulated Vegetation

**Other**

-  Council Boundary
-  Property Boundary
-  Waterway

**DRAFT**

**DISCLAIMER:**  
While every care is taken to ensure the accuracy of this product, the Western Downs Regional Council does not make any representations or warranties about its accuracy, reliability, completeness or suitability for any particular purpose and disclaims all responsibility and all liability (including without limitation, liability in negligence) for all expenses, losses, damages (including indirect or consequential damage) and costs that may occur as a result of the product being inaccurate or incomplete in any way or for any reason.

Base material reproduced with the permission of the Director-General, Department of Resources © The State of Queensland (Department of Resources) [2023]

**DATA SOURCES:** WDRC, QSpatial  
Cadastral Boundaries - May 2023 (© State of Queensland (Department of Resources) 2021)  
MES - May 2023 (© State of Queensland (Department of Environment and Science) 2023)

Copyright Western Downs Regional Council 2023  
Date Generated : 26/06/2023  
Revision 3.0  
Coordinate System: GDA 1994 MGA Zone 56

