

Chinchilla Botanic Parklands

The **Chinchilla Botanic Parklands** is a \$5.9 million project co-funded by the Western Downs Regional Council and the Queensland Government, with Council delivering the project. Spanning 4.2 hectares between Canaga and Wambo Streets, the Parklands will boast state-of-the-art water treatment and irrigation systems with solar panels powering the entire site.

The long-awaited project was first announced in 2016, stemming from a community vision that has origins as far back the 1970's. Set to become a signature destination for community events and entertainment across the region, the **Chinchilla Botanic Parklands** will add to the beauty, heritage and liveability of the Western Downs.

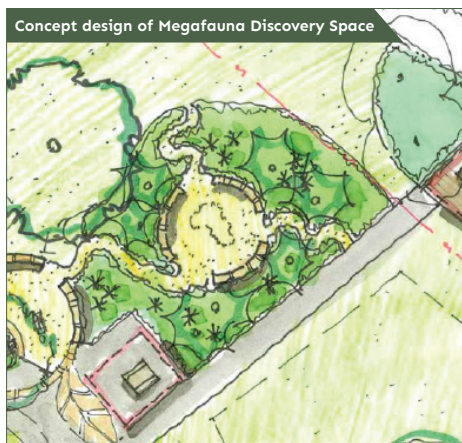
The Chinchilla Botanic Parklands is a long-term vision, with total site development taking place over multiple stages in the next five to ten years.



Celebrating the unique identity of Chinchilla

The Old...

The Parkland's **Megafauna Discovery Space** is a celebration of the prehistoric flora and fauna native to the Chinchilla area, with some as ancient as 3.5 million years old! Come and meet the Diprotodon — a mega-marsupial 80 times larger than its closest living relative; the wombat. Channel your inner palaeontologist to burrow for fossils in the prehistoric dig site and discover ancient artefacts hidden within the fern retreat.

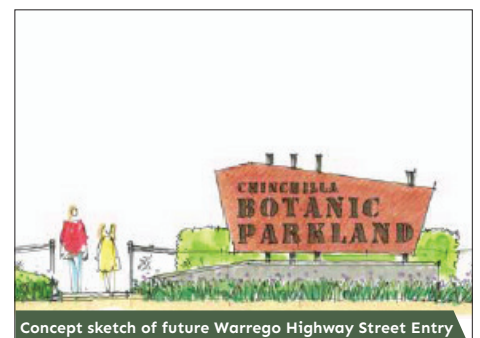
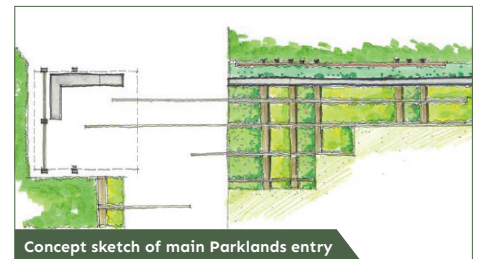


Come and discover the rich **Aboriginal Cultural History** of Chinchilla in the Parklands:

gather in the yarning circle to hear of how ancient Aboriginal communities lived in harmony with the land, and witness the scar trees still standing on site after untold years.



As a community established alongside the railway tracks in the late 19th Century, Chinchilla's **Railway Heritage** serves as major inspiration for the Parklands design. Repurposed steel tracks and rusted corten metal reflect the original use of the site, where a locomotive depot built in 1914 off the Western line stood for 80 years — well outliving the end of Queensland Rail's steam era.



The New...

Honouring Chinchilla's iconic pink and green fruit, a custom designed **Water Play Area** will be the showpiece of the Parkland's playscapes. From a giant watermelon bucket and watermelon pop-jets, to painted paving and themed sun lounges for those warm summer days, the region's sweet history will be on display at Queensland's only water park west of the coastline.



An **Amphitheatre** takes centre stage in the Parkland design, ideal for open-air festivals, events and music and theatre performances. Set to become Chinchilla's cultural and artistic entertainment hub, the generous event lawn can comfortably accommodate 1,500 guests.

The Parkland's **Botanic Gardens** will be a showcase of the region's diverse flora: black cracking clays, Chinchilla red sands, Barakula wildflowers and blooming wattles help to weave the cultural narrative of Chinchilla. Iconic local species, such as the White Cypress Pine, Chinchilla White Gum, Wilga and

Silver Leafed Ironbark will also be highlighted in the design.

Local green thumbs and budding horticulturalists can get their hands dirty, with the **Demonstration Gardens** providing inspiration for backyards across Chinchilla through a display of trees, grasses and flowering plants best suited to the Western Downs climate.

And don't forget about the **Ephemeral Creek** that will meander through the parkland, with the shoreline planting mirroring that of Charleys Creek.

