



# Manufacturing

## INVESTMENT PROSPECTUS

**It's the people that make it.**

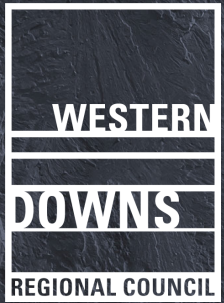
The Western Downs is a fast growing regional economy with a 34% GRP growth over the past 5 years. Combining country lifestyle with modern living and conveniences, the Western Downs enjoys a well-rounded and diverse economy.\*

Construction, agriculture and energy are the strongest industries in the region, with a myriad of potential opportunities for the manufacturing sector to value-add.

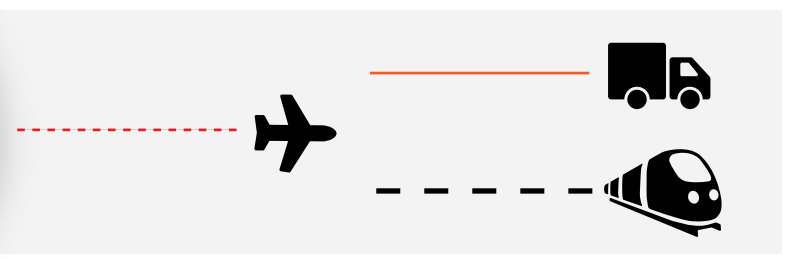
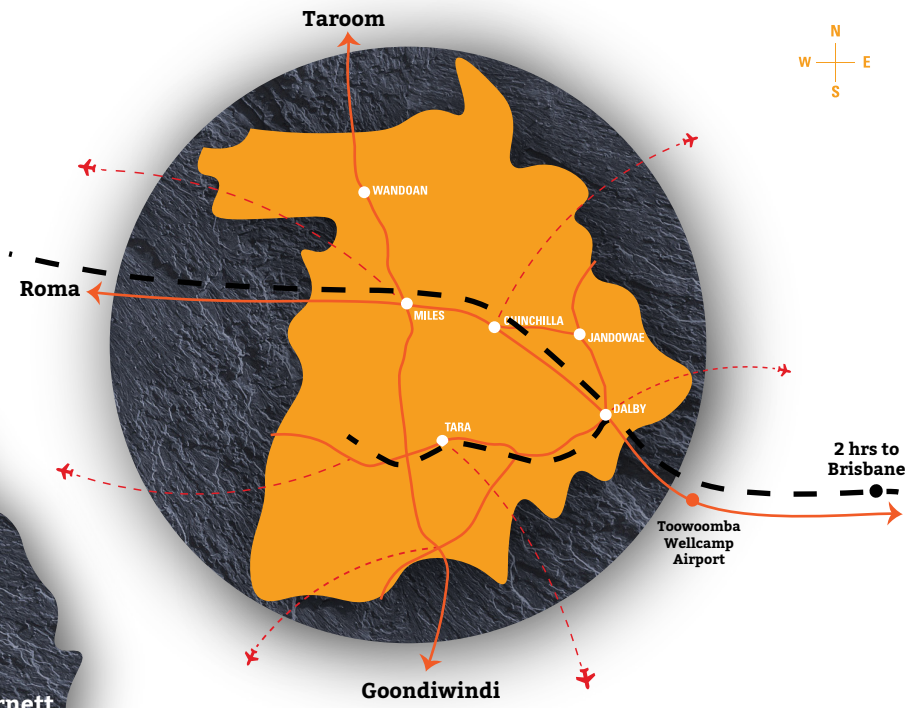
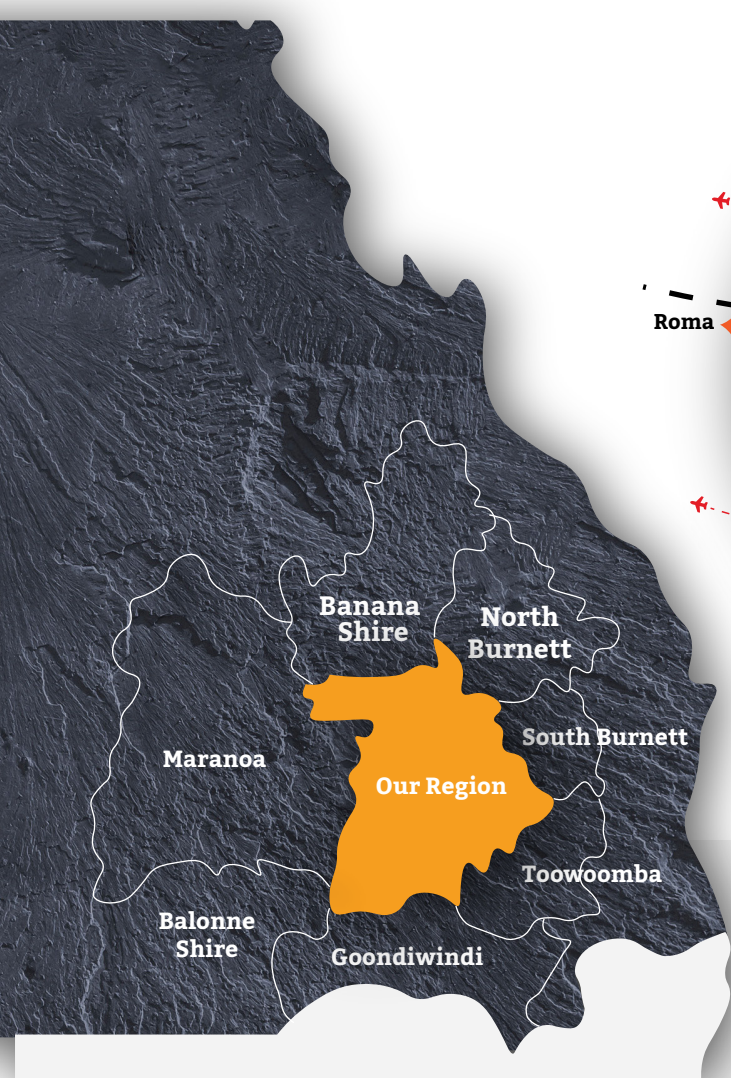
The Western Downs is renowned for a well-established, strong and innovative manufacturing sector. Competitive and capable value chains and support business services are established throughout the Western Downs.

The Industrial Land Use Strategy has identified suitable land availability and Council's Planning Scheme allows for high impact industrial zoned land. The acquisition cost of industrial land is 87% less in the Western Downs region compared to Brisbane City per hectare.\*\*

\* Source: National Institute of Economic and Industry Research (NIER) Economy ID 2020-21  
\*\* Source: Fraser Valuers, 2022







# CONNECTIVITY IN THE WESTERN DOWNS



This region is located 207km north-west of Brisbane and 83km north-west of Toowoomba. It is connected by major road and rail networks including the Leichhardt, Moonie and Warrego Highways and the West Moreton rail system. Aerodromes are located in Chinchilla, Dalby, Miles, Tara, Meandarra and Moonie.



The region is located strategically with easy connectivity to national and international export markets via The Port of Brisbane and Toowoomba Wellcamp Airport. Access to Toowoomba Wellcamp Airport provides producers a dedicated 747-8F International Freight service to Hong Kong and chartered cargo flights.



The proposed ARTC Inland Rail project will reduce transport costs for producers and improve connectivity to Brisbane and Melbourne.



There are 106 mobile towers positioned across the region. NBN fibre optic runs along the Warrego Highway and connects Dalby (business grade), Chinchilla and Miles. Other localities are serviced by fixed wireless and satellite services.



Rural land acquisition costs in the Western Downs significantly less than neighbouring regions.

# PRODUCTIVITY

Currently, there are 123 manufacturing businesses located in the Western Downs. Petroleum and Coal product manufacturing is the largest sector, followed by fabricated metal products, machinery and equipment manufacturing and food product manufacturing.\*

The manufacturing industry in the Western Downs is recognized as "high value, low volume", which is supported by industry figures.

In 2020/21 the total output was \$696.5 mln, demonstrating significant growth by more than doubling over the past five years. Exports have tripled over the same period and contributed in 2020 \$355 mln to the region.\*

Strength in the manufacturing industry is demonstrated by the increase in local jobs. More than 600 jobs were created over the past five years, leading to a total of over 1,600 jobs in 2021 in the sector.\*

## Manufacturing strength

PETROLEUM & COAL*		FABRICATED METAL PRODUCTS*		MACHINERY & EQUIPMENT*	
2020/ 21		2020 /21		2020/21	
Total value sales	\$161.7M	Total value sales	\$181.7M	Total value sales	\$53.8M
Local sales	\$22.7M	Local sales	\$131.5M	Local sales	\$38.4M
Exports	\$144.4M	Exports	\$50.2M	Exports	\$15.4M
Value-add	\$43.4M	Value-add	\$67.5M	Value-add	\$25.9M
2015/ 2016		2015/ 2016		2015/ 2016	
Total value sales	\$13.0M	Total value sales	\$31.7M	Total value sales	\$60.2M
Local sales	\$10.3M	Local sales	\$27.5M	Local sales	\$42.5M
Exports	\$2.7M	Exports	\$4.3M	Exports	\$17.7M
Value-add	\$3.5M	Value-add	\$12.1M	Value-add	\$27.4M

## Employment and skills development

Skills in the manufacturing industry are supported by Trade Training Centres in Dalby and Miles. A new state-of-the-art Trade Training Centre is to be built in Chinchilla, enabling high school students a skills link with the region's industries.

TAFE Queensland has an industry-standard facility in Chinchilla offering study courses in agriculture and access to learn skills required to work in the resources industry.

Certificate qualifications can also be completed at the Dalby TAFE facility with courses in structural steel fabricating, boilermaking and welding available.

With a regional demand in mechanical trade skills, engineering career opportunities are also available to become a fitter or turner.



# OPEN FOR BUSINESS

The strength of the construction, agriculture and energy sectors make the Western Downs a prime location for a variety of manufacturing specialities including:

**Renewable  
energy  
components**

**Custom  
manufacturing  
(fabrication)**

**Food product  
manufacturing**

**Research &  
development  
facilities**

**Machinery &  
equipment  
manufacturing**

**Mining  
equipment**

**Robotics &  
engineering**



WESTERN  
DOWNS

BRISBANE

Western Downs Regional Council has a concise and innovative 5-year Economic Development Strategy which includes one of Queensland's most progressive Planning Schemes, and we remain committed to attracting and enabling development.

**Planning  
scheme makes  
investment  
simple**

**A pragmatic  
approach to  
assessment**

**Highly  
competitive  
application  
fees**

**Support  
throughout the  
process**

This Prospectus offers only a glimpse of what our great region has to offer. For more information on Western Downs Regional Council visit [www.wdrc.qld.gov.au](http://www.wdrc.qld.gov.au) or contact the Economic Development Team Ph. 07 4679 4000 | E. [info@wdrc.qld.gov.au](mailto:info@wdrc.qld.gov.au)

## Western Downs Regional Council partners with...

Toowoomba and Surat Basin Enterprise (TSBE)  
TSBE is the go-to organisation linking business with opportunity to create sustainable growth and diversity for the region.  
Find out more via [www.tsbe.com.au](http://www.tsbe.com.au)

Active Chambers of Commerce located in Chinchilla, Dalby, Jandowae, Miles, Tara and Wandoan foster a business network and community.  
Find out more via [www.wdrc.qld.gov.au](http://www.wdrc.qld.gov.au)

