

Legend

- Significant Vegetation
- Major Biodiversity Corridor
- Minor Biodiversity Corridor
- Protected Area
- State Forest
- Environmental Reserve
- Wetland
- Waterbody
- Waterway
- Wildflower Area
- Urban Area

General Information

- Council Boundary
- Cadastre

**WATERWAY**

Waterways (stream order 3 or above) including but not limited to: (1) Condamine River, (2) Moonie River, (3) Weir River, (4) Myall Creek, (5) Charleys Creek, (6) Wongongera Creek, (7) Juandah Creek, (8) Cooranga Creek, (9) Jimbour Creek, (10) Undulla Creek, (11) Humberg Creek, (12) Wambo Creek, (13) Moramby Creek, (14) Burraburri Creek, (15) Dogwood Creek, (16) Cadarga Creek, (17) Johnson Creek, (18) Bungaban Creek, (19) Eurombah Creek, (20) Dulacca Creek, and (21) Horse Creek

**WETLAND**

Numerous wetlands including but not limited to (1) Sprng Wetland (Fenshen and Fauiax 2005)

**WATERBODY**

(1) Lake Broadwater, (2) The Gums Lagoon and (3) Caliguel Lagoon

**PROTECTED AREA**

National Park: (1) Bunya Mountains, (2) Southwood, and (3) Erringibba Conservation Park: (4) Bunya Mountains, and (5) Lake Broadwater Resources Reserve: (6) Lake Broadwater, and (7) Stones Country

**STATE FOREST**

(1) Barakula, (2) Kumbarella, (3) Boondandilla, (4) Braemar, (5) Nudley, (6) Diamondy, (7) Condamine, (8) Yuleba, (9) Gurulmundi, (10) Warranna, (11) Rosehall, (12) Ballymore, (13) Woodduck, (14) Kinkora, and (15) Ula Ula

**ENVIRONMENTAL RESERVE**

(1) Bunya Mountains Road Reserve, and (2) Prenzlars Road Reserve

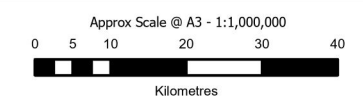
**DISCLAIMER:**

While every care is taken to ensure the accuracy of this product, the Western Downs Regional Council does not make any representations or warranties about its accuracy, reliability, completeness or suitability for any particular purpose and disclaims all responsibility and all liability (including without limitation, liability in negligence) for all expenses, losses, damages (including indirect or consequential damage) and costs that may occur as a result of the product being inaccurate or incomplete in any way or for any reason.

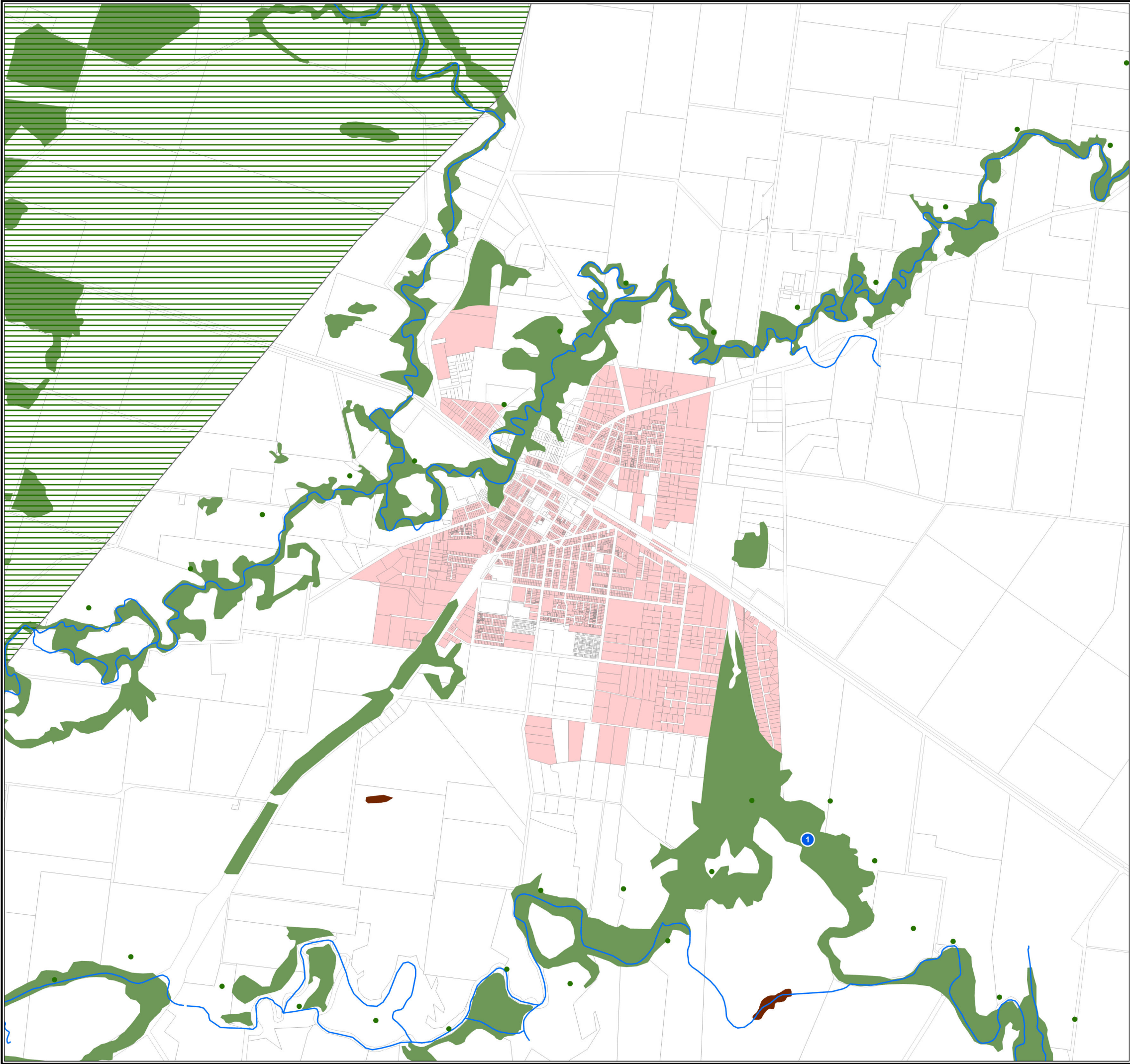
Base material reproduced with the permission of the Director-General, Department of Resources © The State of Queensland (Department of Resources) [2023]

**DATA SOURCES:** WDRC, QSpatial  
Cadastral Boundaries - May 2023 (© State of Queensland (Department of Resources) 2021)  
MSES - May 2023 (© State of Queensland (Department of Environment and Science) 2023)


© Copyright Western Downs Regional Council 2023  
Date Generated : 23/05/2023  
Revision 3.0  
Coordinate System: GDA 1994 MGA Zone 56











**Legend**


 Significant Vegetation


 Major Biodiversity Corridor


 Minor Biodiversity Corridor


 Protected Area

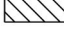
 State Forest


 Environmental Reserve

 Wetland

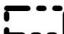
 Waterbody


 Waterway

 Wildflower Area

 Urban Area

**General Information**

 Council Boundary


 Property Boundary

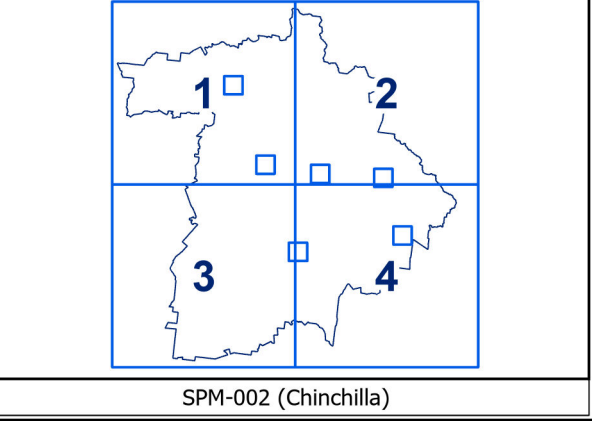
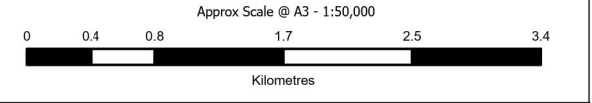
**DISCLAIMER:**  
While every care is taken to ensure the accuracy of this product, the Western Downs Regional Council does not make any representations or warranties about its accuracy, reliability, completeness or suitability for any particular purpose and disclaims all responsibility and all liability (including without limitation, liability in negligence) for all expenses, losses, damages (including indirect or consequential damage) and costs that may occur as a result of the product being inaccurate or incomplete in any way or for any reason.

Base material reproduced with the permission of the Director-General, Department of Resources  
© The State of Queensland (Department of Resources) [2023]

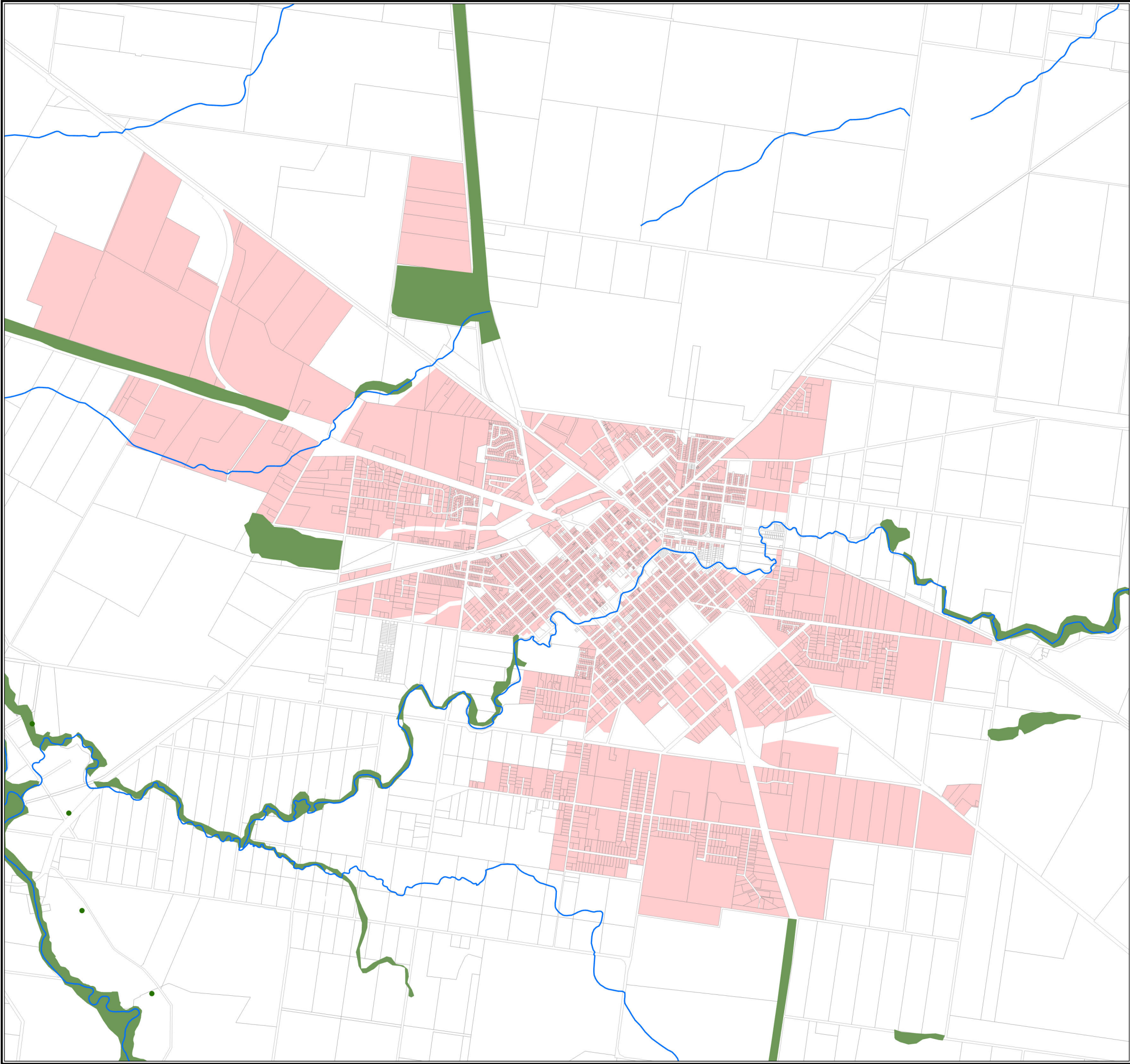
**DATA SOURCES:** WDRC, QSpatial  
Cadastral Boundaries - May 2023 (© State of Queensland (Department of Resources) 2021)  
MSES - May 2023 (© State of Queensland (Department of Environment and Science) 2023)

© Copyright Western Downs Regional Council 2023  
Date Generated : 23/05/2023  
Revision 3.0  
Coordinate System: GDA 1994 MGA Zone 56









**Legend**

Significant Vegetation

Major Biodiversity Corridor

Minor Biodiversity Corridor

Protected Area

State Forest

Environmental Reserve

Wetland

Waterbody

Waterway

Wildflower Area

Urban Area

**General Information**

Council Boundary

Property Boundary

**DISCLAIMER:**  
While every care is taken to ensure the accuracy of this product, the Western Downs Regional Council does not make any representations or warranties about its accuracy, reliability, completeness or suitability for any particular purpose and disclaims all responsibility and all liability (including without limitation, liability in negligence) for all expenses, losses, damages (including indirect or consequential damage) and costs that may occur as a result of the product being inaccurate or incomplete in any way or for any reason.

Base material reproduced with the permission of the Director-General, Department of Resources  
© The State of Queensland (Department of Resources) [2023]

**DATA SOURCES:** WDRC, QSpatial  
Cadastral Boundaries - May 2023 (© State of Queensland (Department of Resources) 2021)  
MSES - May 2023 (© State of Queensland (Department of Environment and Science) 2023)

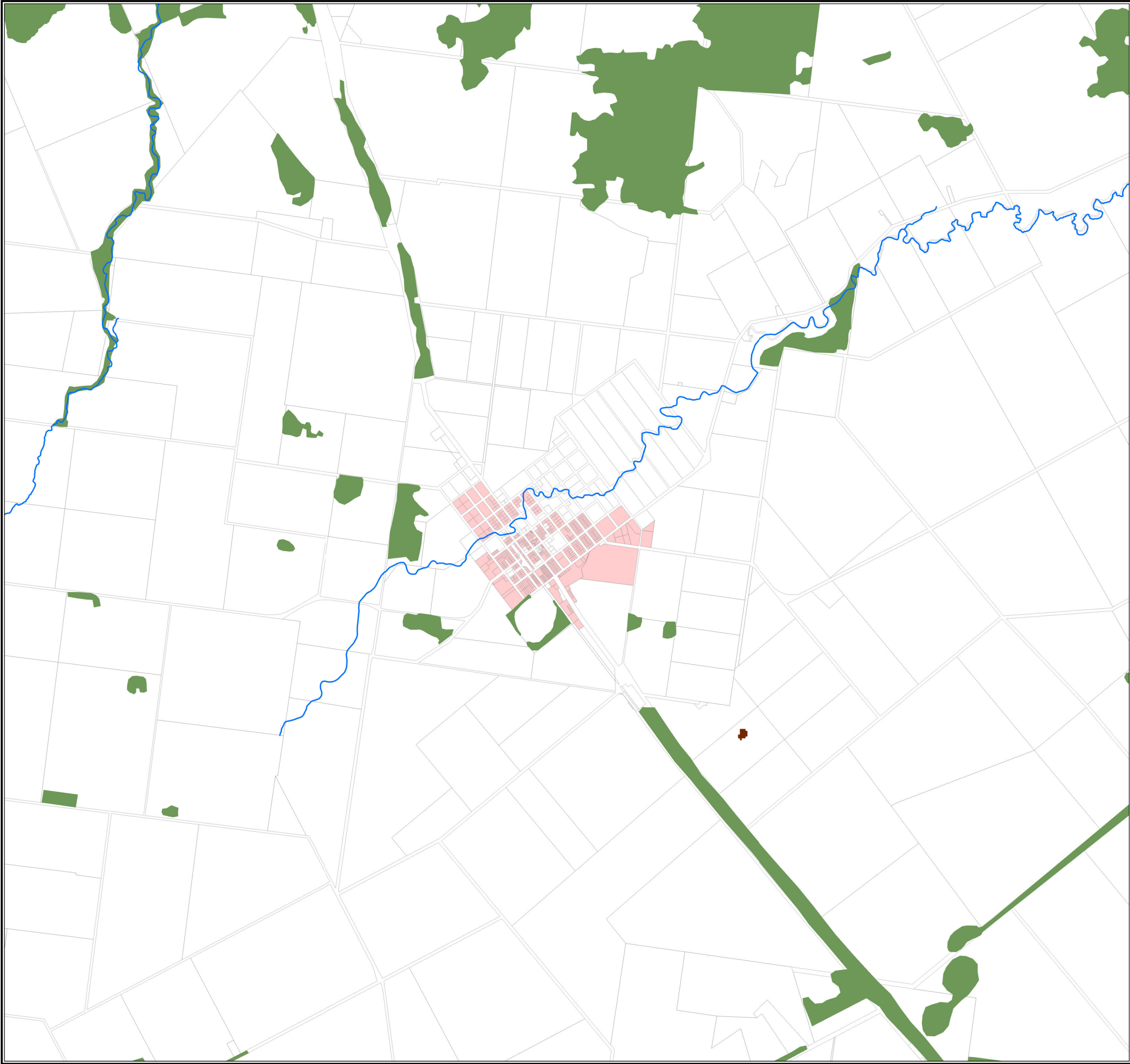
© Copyright Western Downs Regional Council 2023  
Date Generated : 23/05/2023  
Revision 3.0  
Coordinate System: GDA 1994 MGA Zone 56

Approx Scale @ A3 - 1:50,000

0 0.4 0.8 1.7 2.5 3.4  
Kilometres

SPM-002 (Dalby)





**Legend**

Significant Vegetation

Major Biodiversity Corridor

Minor Biodiversity Corridor

Protected Area

State Forest

Environmental Reserve

Wetland

Waterbody

Waterway

Wildflower Area

Urban Area

**General Information**

Council Boundary

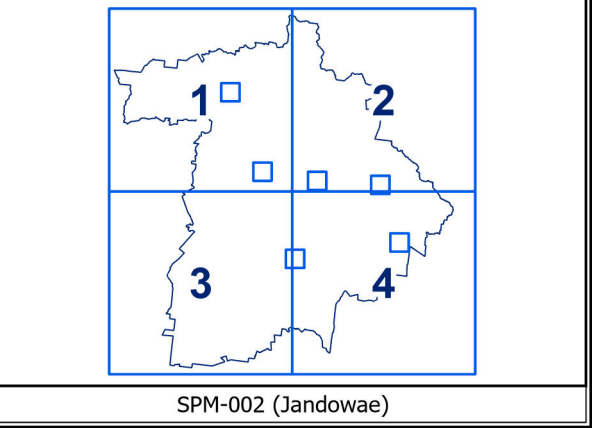
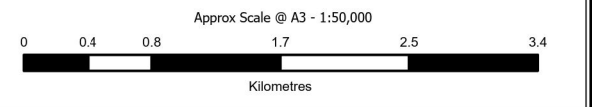
Property Boundary

**DISCLAIMER:**  
While every care is taken to ensure the accuracy of this product, the Western Downs Regional Council does not make any representations or warranties about its accuracy, reliability, completeness or suitability for any particular purpose and disclaims all responsibility and all liability (including without limitation, liability in negligence) for all expenses, losses, damages (including indirect or consequential damage) and costs that may occur as a result of the product being inaccurate or incomplete in any way or for any reason.

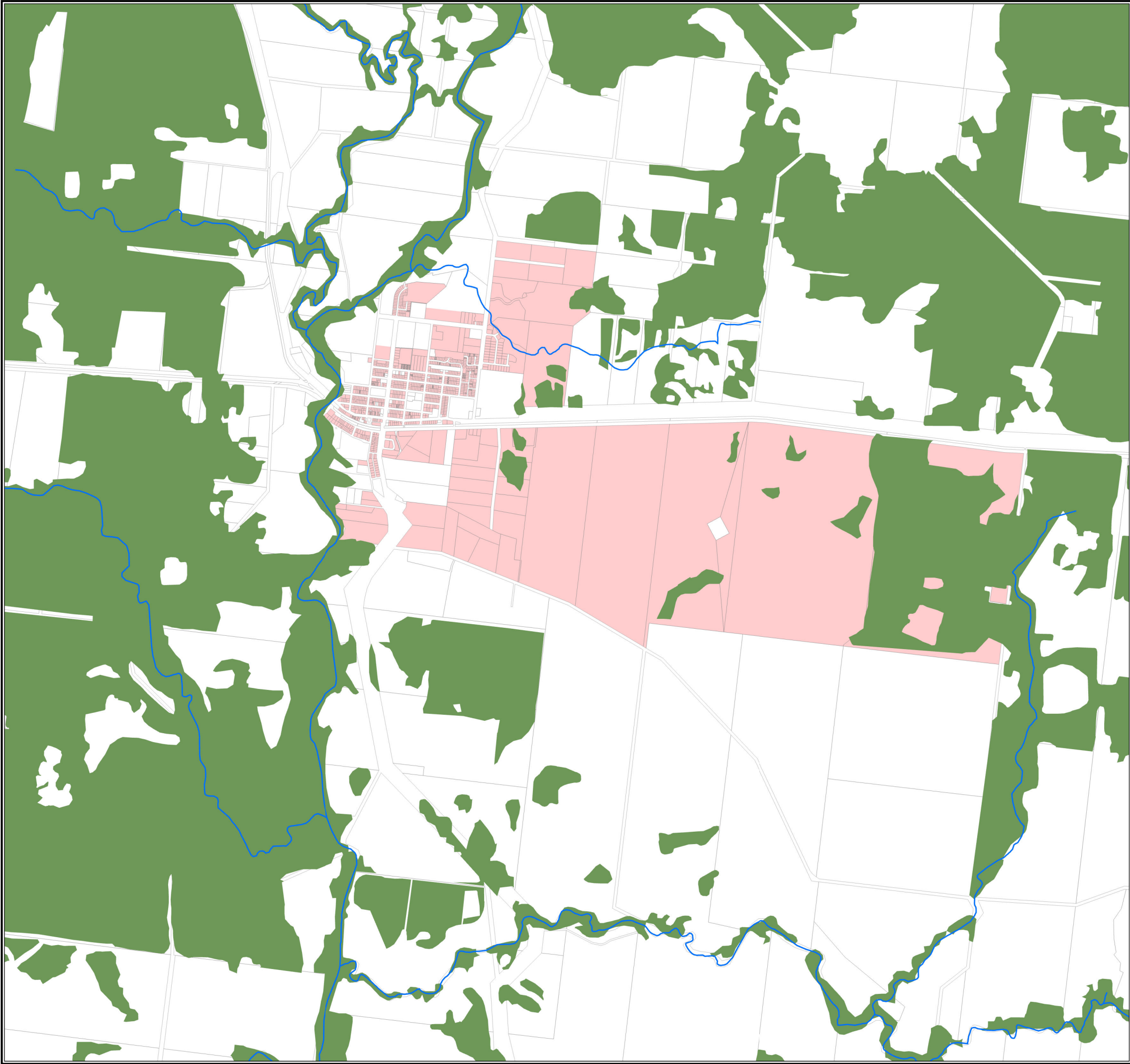
Base material reproduced with the permission of the Director-General, Department of Resources  
© The State of Queensland (Department of Resources) [2023]

**DATA SOURCES:** WDRC, QSpatial  
Cadastral Boundaries - May 2023 (© State of Queensland (Department of Resources) 2021)  
MSES - May 2023 (© State of Queensland (Department of Environment and Science) 2023)

© Copyright Western Downs Regional Council 2023  
Date Generated : 23/05/2023  
Revision 3.0  
Coordinate System: GDA 1994 MGA Zone 56







**Legend**

Significant Vegetation

Major Biodiversity Corridor

Minor Biodiversity Corridor

Protected Area

State Forest

Environmental Reserve

Wetland

Waterbody

Waterway

Wildflower Area

Urban Area

**General Information**

Council Boundary

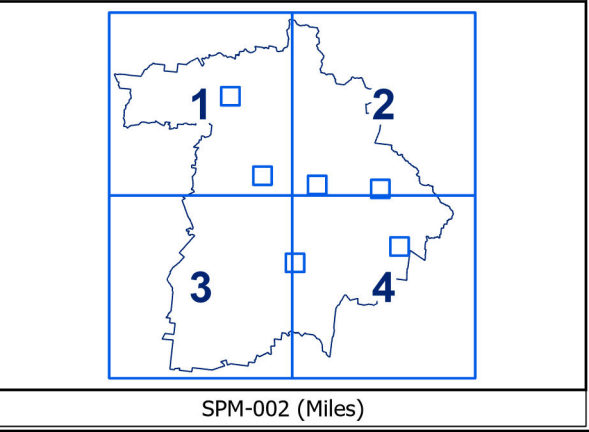
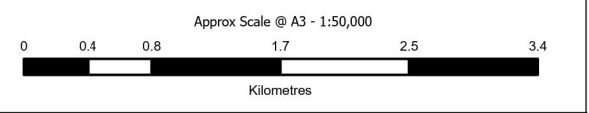
Property Boundary

**DISCLAIMER:**  
While every care is taken to ensure the accuracy of this product, the Western Downs Regional Council does not make any representations or warranties about its accuracy, reliability, completeness or suitability for any particular purpose and disclaims all responsibility and all liability (including without limitation, liability in negligence) for all expenses, losses, damages (including indirect or consequential damage) and costs that may occur as a result of the product being inaccurate or incomplete in any way or for any reason.

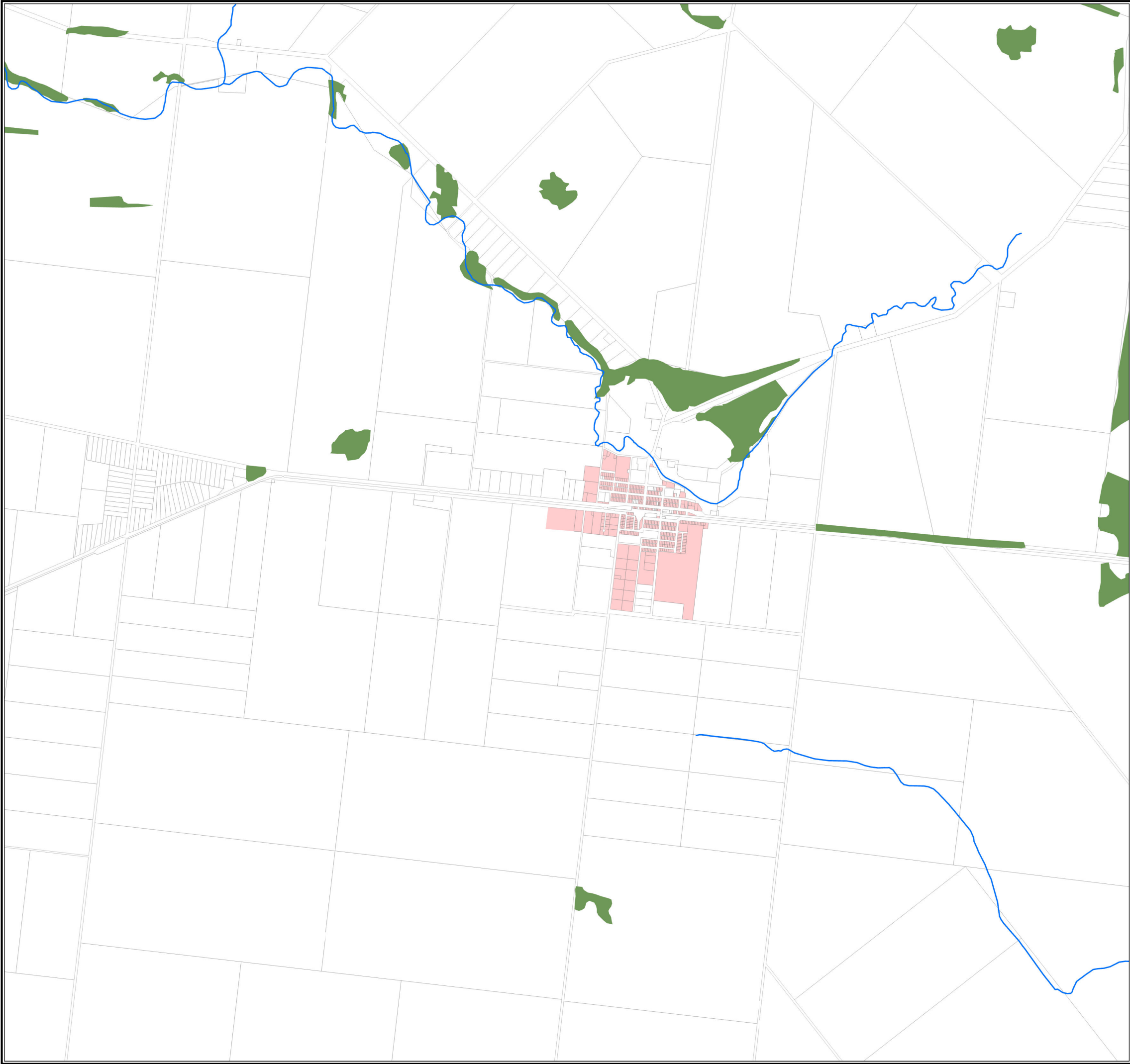
Base material reproduced with the permission of the Director-General, Department of Resources  
© The State of Queensland (Department of Resources) [2023]

**DATA SOURCES:** WDRC, QSpatial  
Cadastral Boundaries - May 2023 (© State of Queensland (Department of Resources) 2021)  
MSES - May 2023 (© State of Queensland (Department of Environment and Science) 2023)

© Copyright Western Downs Regional Council 2023  
Date Generated : 23/05/2023  
Revision 3.0  
Coordinate System: GDA 1994 MGA Zone 56







**Legend**

- Significant Vegetation
- Major Biodiversity Corridor
- Minor Biodiversity Corridor
- Protected Area
- State Forest
- Environmental Reserve
- Wetland
- Waterbody
- Waterway
- Wildflower Area
- Urban Area

**General Information**

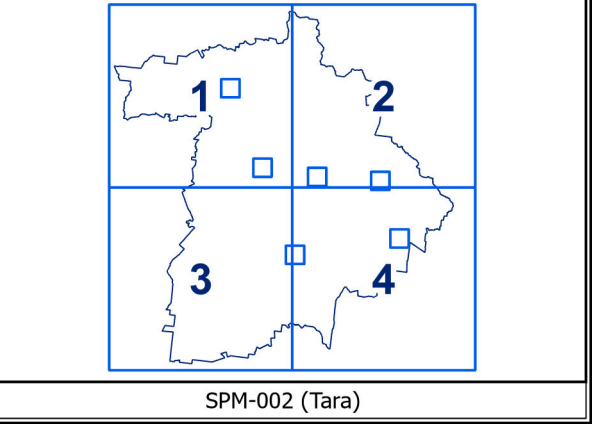
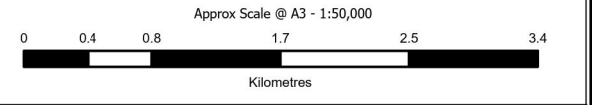
- Council Boundary
- Property Boundary

**DISCLAIMER:**  
While every care is taken to ensure the accuracy of this product, the Western Downs Regional Council does not make any representations or warranties about its accuracy, reliability, completeness or suitability for any particular purpose and disclaims all responsibility and all liability (including without limitation, liability in negligence) for all expenses, losses, damages (including indirect or consequential damage) and costs that may occur as a result of the product being inaccurate or incomplete in any way or for any reason.

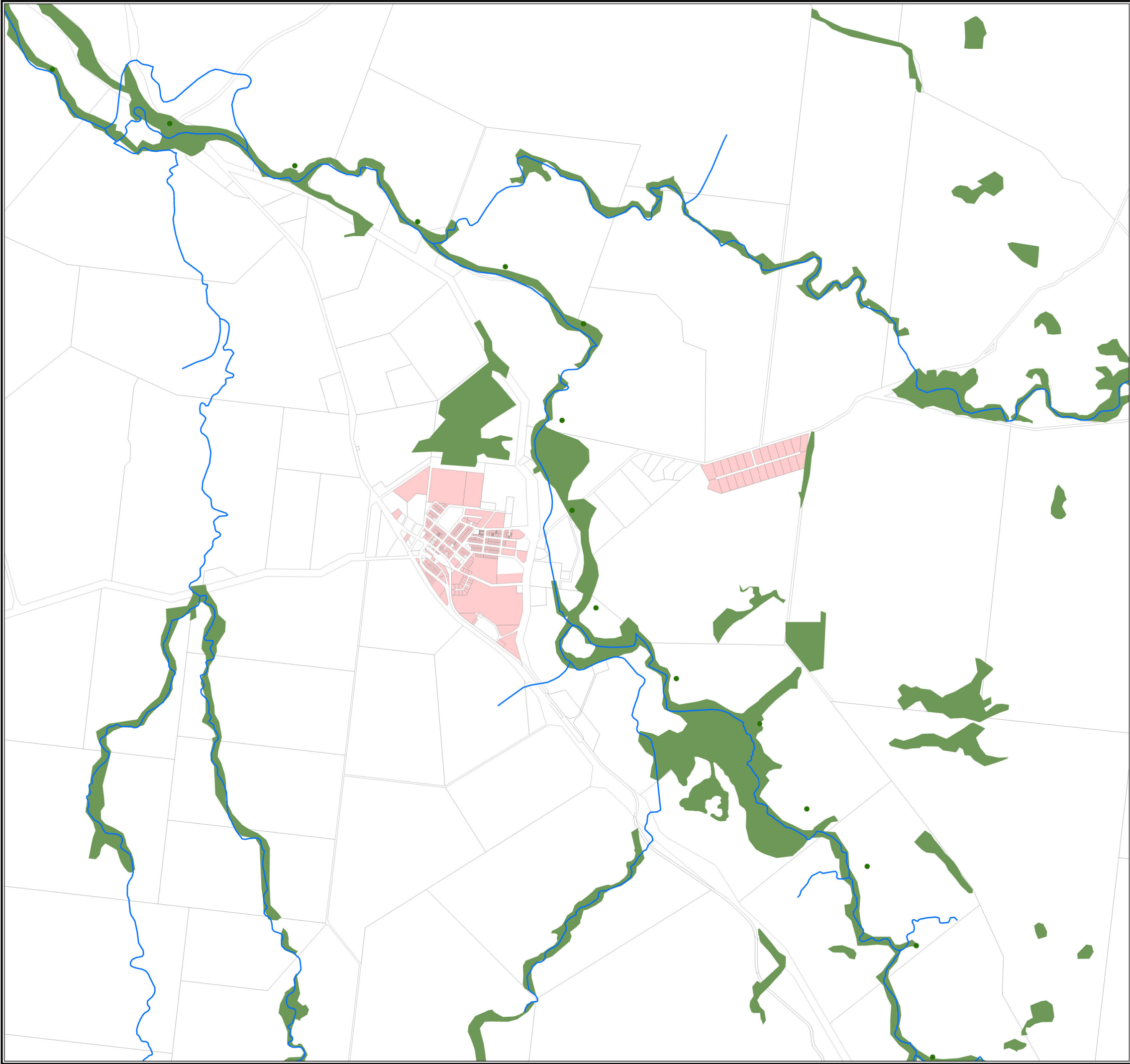
Base material reproduced with the permission of the Director-General, Department of Resources  
© The State of Queensland (Department of Resources) [2023]

**DATA SOURCES:** WDRC, QSpatial  
Cadastral Boundaries - May 2023 (© State of Queensland (Department of Resources) 2021)  
MSES - May 2023 (© State of Queensland (Department of Environment and Science) 2023)

© Copyright Western Downs Regional Council 2023  
Date Generated : 23/05/2023  
Revision 3.0  
Coordinate System: GDA 1994 MGA Zone 56







**Legend**

Significant Vegetation

Major Biodiversity Corridor

Minor Biodiversity Corridor

Protected Area

State Forest

Environmental Reserve

Wetland

Waterbody

Waterway

Wildflower Area

Urban Area

Council Boundary

Property Boundary

**General Information**

Council Boundary

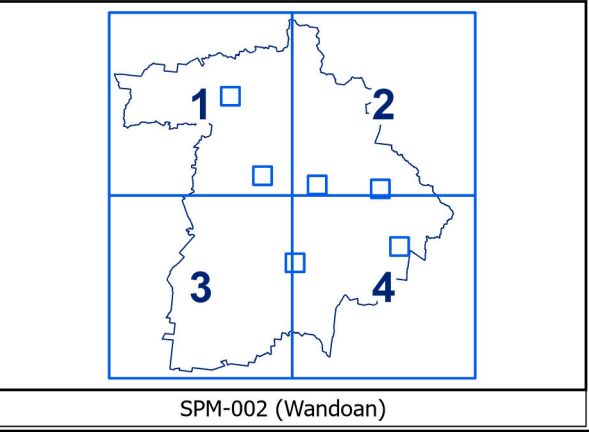
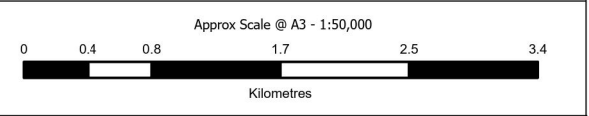
Property Boundary

**DISCLAIMER:**  
While every care is taken to ensure the accuracy of this product, the Western Downs Regional Council does not make any representations or warranties about its accuracy, reliability, completeness or suitability for any particular purpose and disclaims all responsibility and all liability (including without limitation, liability in negligence) for all expenses, losses, damages (including indirect or consequential damage) and costs that may occur as a result of the product being inaccurate or incomplete in any way or for any reason.

Base material reproduced with the permission of the Director-General, Department of Resources  
© The State of Queensland (Department of Resources) [2023]

**DATA SOURCES:** WDRC, QSpatial  
Cadastral Boundaries - May 2023 (© State of Queensland (Department of Resources) 2021)  
MSES - May 2023 (© State of Queensland (Department of Environment and Science) 2023)

© Copyright Western Downs Regional Council 2023  
Date Generated : 23/05/2023  
Revision 3.0  
Coordinate System: GDA 1994 MGA Zone 56





**Legend**

- Significant Vegetation
- Major Biodiversity Corridor
- Minor Biodiversity Corridor
- Protected Area
- State Forest
- Environmental Reserve
- Wetland
- Waterbody
- Waterway
- Wildflower Area
- Urban Area

**General Information**

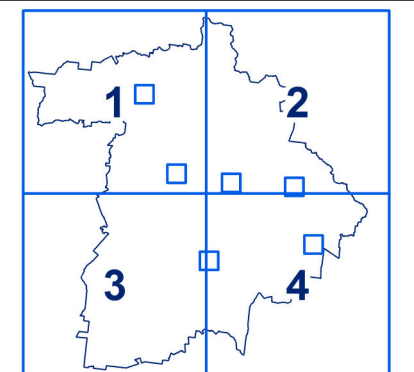
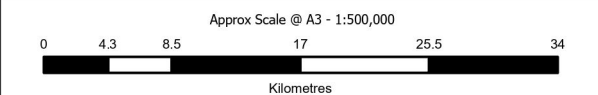
- Council Boundary
- Property Boundary

**DISCLAIMER:**  
While every care is taken to ensure the accuracy of this product, the Western Downs Regional Council does not make any representations or warranties about its accuracy, reliability, completeness or suitability for any particular purpose and disclaims all responsibility and all liability (including without limitation, liability in negligence) for all expenses, losses, damages (including indirect or consequential damage) and costs that may occur as a result of the product being inaccurate or incomplete in any way or for any reason.

Base material reproduced with the permission of the Director-General, Department of Resources  
© The State of Queensland (Department of Resources) [2023]

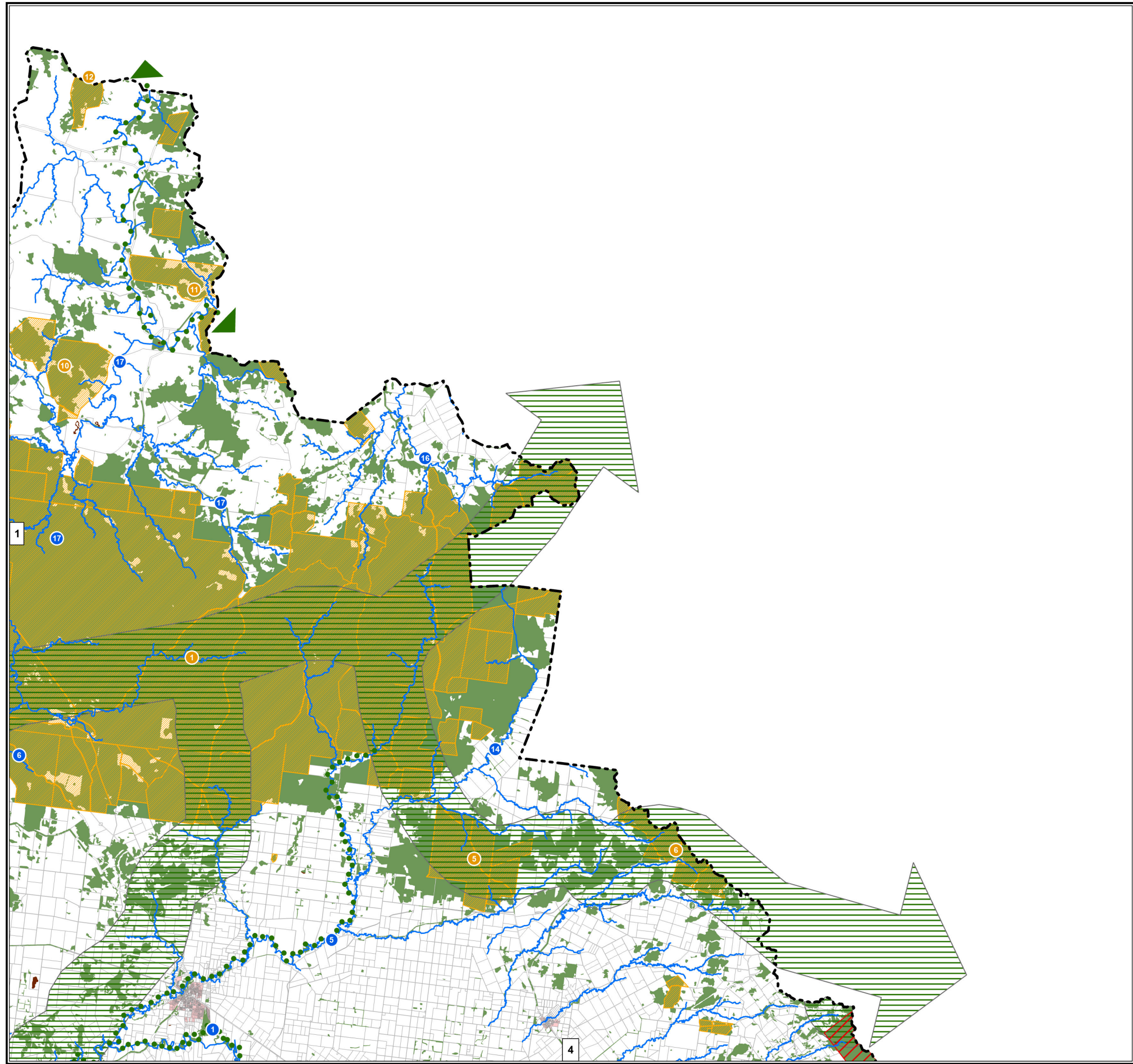
**DATA SOURCES:** WDRC, QSpatial  
Cadastral Boundaries - May 2023 (© State of Queensland (Department of Resources) 2021)  
MSES - May 2023 (© State of Queensland (Department of Environment and Science) 2023)

© Copyright Western Downs Regional Council 2023  
Date Generated : 23/05/2023  
Revision 3.0  
Coordinate System: GDA 1994 MGA Zone 56



SPM-002.1





**Legend**

	Significant Vegetation
	Major Biodiversity Corridor
	Minor Biodiversity Corridor
	Protected Area
	State Forest
	Environmental Reserve
	Wetland
	Waterbody
	Waterway
	Wildflower Area
	Urban Area

**General Information**

	Council Boundary
	Property Boundary

**DISCLAIMER:**  
While every care is taken to ensure the accuracy of this product, the Western Downs Regional Council does not make any representations or warranties about its accuracy, reliability, completeness or suitability for any particular purpose and disclaims all responsibility and all liability (including without limitation, liability in negligence) for all expenses, losses, damages (including indirect or consequential damage) and costs that may occur as a result of the product being inaccurate or incomplete in any way or for any reason.

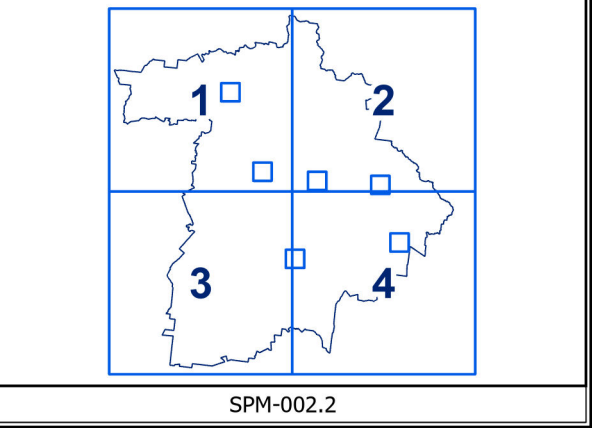
Base material reproduced with the permission of the Director-General, Department of Resources  
© The State of Queensland (Department of Resources) [2023]

**DATA SOURCES:** WDRC, QSpatial  
Cadastral Boundaries - May 2023 (© State of Queensland (Department of Resources) 2021)  
MSES - May 2023 (© State of Queensland (Department of Environment and Science) 2023)

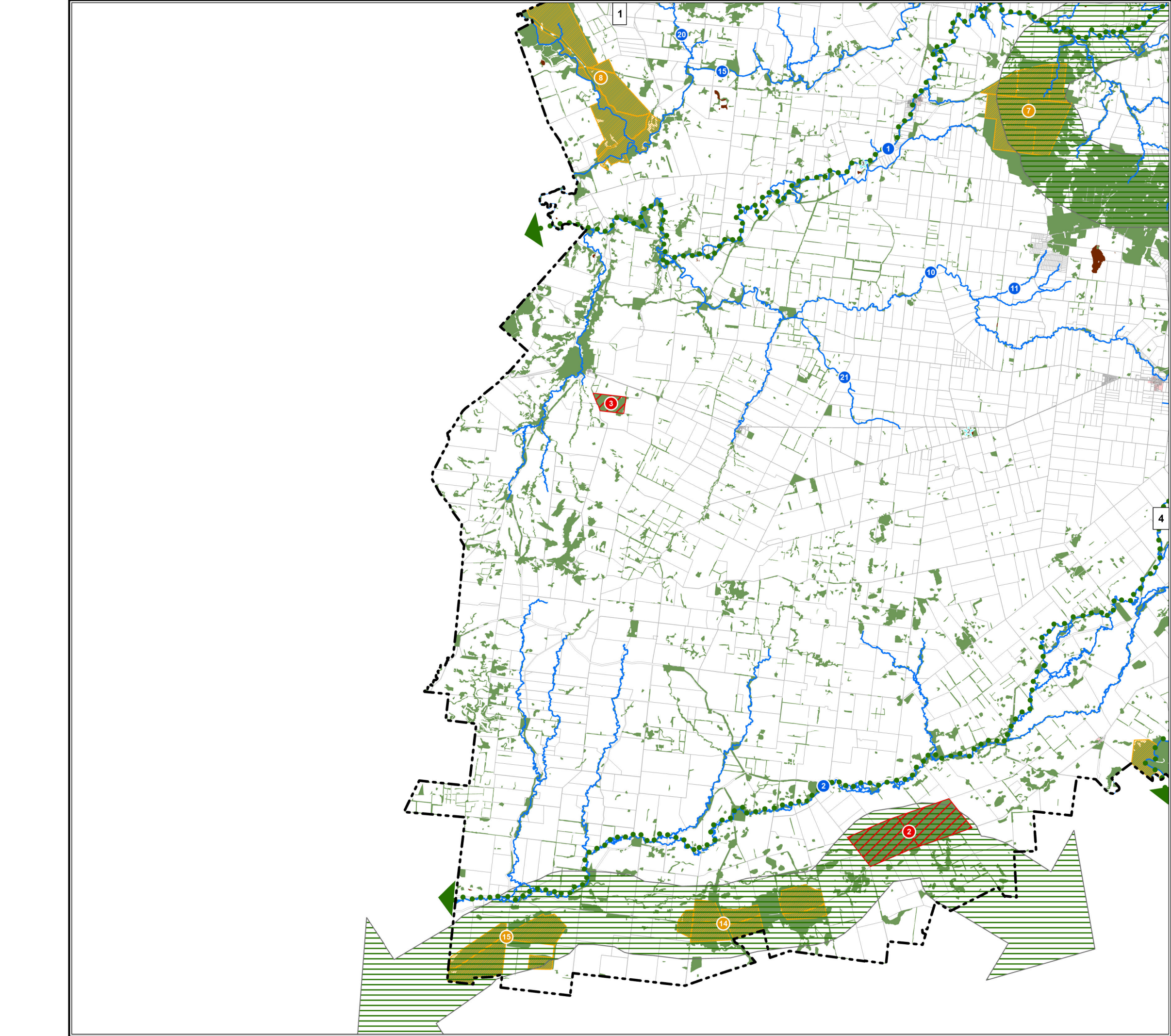
© Copyright Western Downs Regional Council 2023  
Date Generated : 23/05/2023  
Revision 3.0  
Coordinate System: GDA 1994 MGA Zone 56

Approx Scale @ A3 - 1:500,000

Kilometres







**Legend**

Significant Vegetation

Major Biodiversity Corridor

Minor Biodiversity Corridor

Protected Area

State Forest

Environmental Reserve

Wetland

Waterbody

Waterway

Wildflower Area

Urban Area

**General Information**

Council Boundary

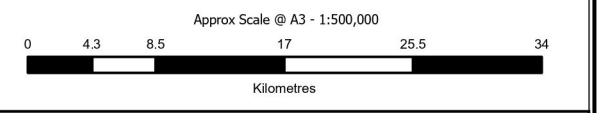
Property Boundary

**DISCLAIMER:**  
While every care is taken to ensure the accuracy of this product, the Western Downs Regional Council does not make any representations or warranties about its accuracy, reliability, completeness or suitability for any particular purpose and disclaims all responsibility and all liability (including without limitation, liability in negligence) for all expenses, losses, damages (including indirect or consequential damage) and costs that may occur as a result of the product being inaccurate or incomplete in any way or for any reason.

Base material reproduced with the permission of the Director-General, Department of Resources  
© The State of Queensland (Department of Resources) [2023]

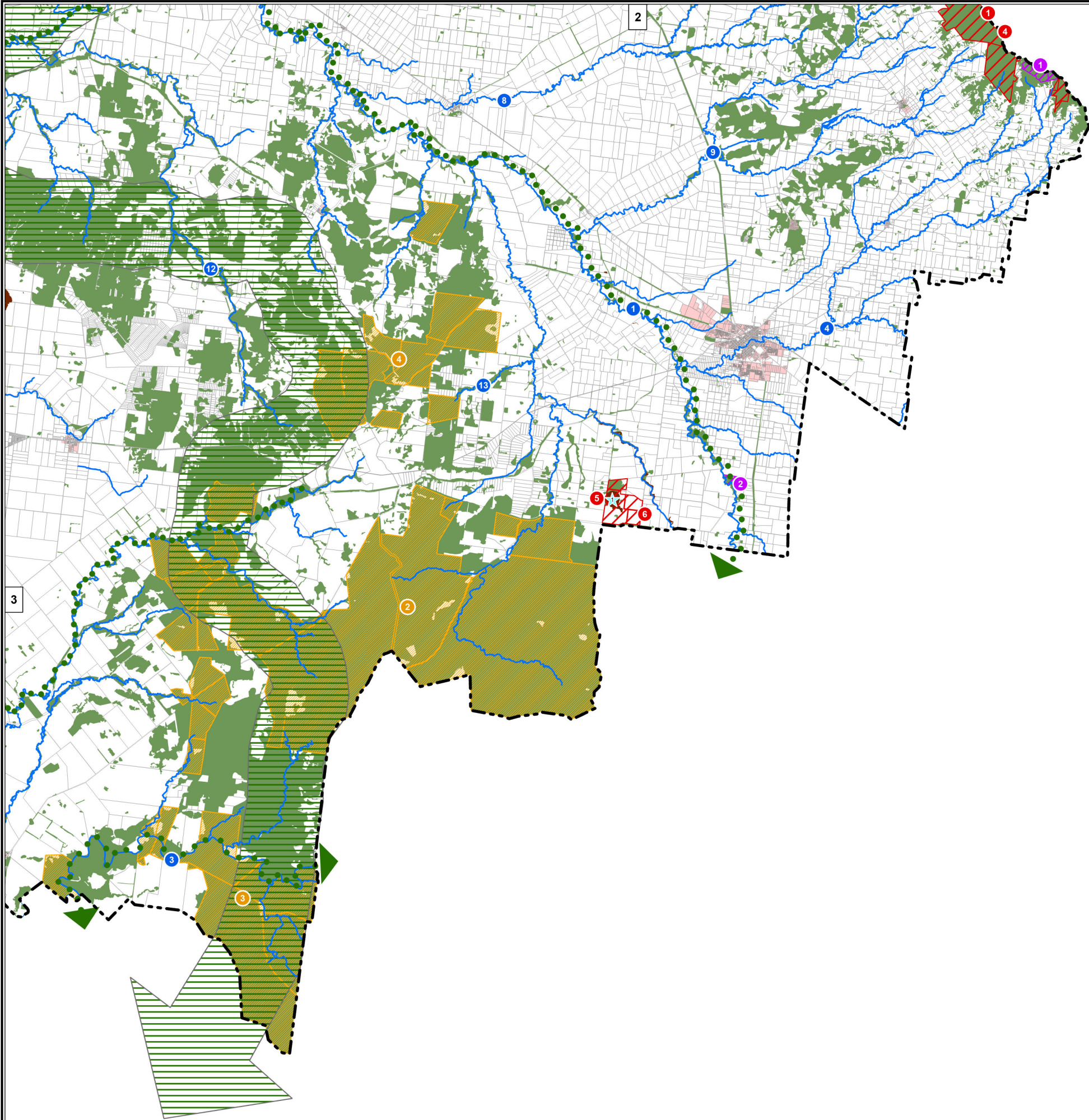
**DATA SOURCES:** WDRC, QSpatial  
Cadastral Boundaries - May 2023 (© State of Queensland (Department of Resources) 2021)  
MSES - May 2023 (© State of Queensland (Department of Environment and Science) 2023)

© Copyright Western Downs Regional Council 2023  
Date Generated : 23/05/2023  
Revision 3.0  
Coordinate System: GDA 1994 MGA Zone 56



SPM-002.3





**Legend**

Significant Vegetation

Major Biodiversity Corridor

Minor Biodiversity Corridor

Protected Area

State Forest

Environmental Reserve

Wetland

Waterbody

Waterway

Wildflower Area

Urban Area

**General Information**

Council Boundary

Property Boundary

**DISCLAIMER:**  
While every care is taken to ensure the accuracy of this product, the Western Downs Regional Council does not make any representations or warranties about its accuracy, reliability, completeness or suitability for any particular purpose and disclaims all responsibility and all liability (including without limitation, liability in negligence) for all expenses, losses, damages (including indirect or consequential damage) and costs that may occur as a result of the product being inaccurate or incomplete in any way or for any reason.

Base material reproduced with the permission of the Director-General, Department of Resources  
© The State of Queensland (Department of Resources) [2023]

**DATA SOURCES:** WDRC, QSpatial  
Cadastral Boundaries - May 2023 (© State of Queensland (Department of Resources) 2021)  
MSES - May 2023 (© State of Queensland (Department of Environment and Science) 2023)

© Copyright Western Downs Regional Council 2023  
Date Generated : 23/05/2023  
Revision 3.0  
Coordinate System: GDA 1994 MGA Zone 56

Approx Scale @ A3 - 1:500,000

Kilometres

