

WESTERN DOWNS REGIONAL COUNCIL

Chinchilla Flood Study

Volume II

Maps

April 2014



DOCUMENT STATUS

Version	Author	Reviewer	Date issued
V01	S Canning/R Walton	S Clark	07/03/2014
V02	S Canning/R Walton	S Clark	02/04/2014

PROJECT DETAILS

Project Name	Western Downs Regional Council Planning Scheme Review: Riverine and Stormwater Flooding
Client	Western Downs Regional Council
Client Project Manager	Allen Christensen
Water Technology Project Manager	Richard Walton
Report Authors	Richard Walton
Job Number	1431-16
Report Number	79

Copyright

Water Technology Pty Ltd has produced this document in accordance with instructions from **Western Downs Regional Council** for their use only. The concepts and information contained in this document are the copyright of Water Technology Pty Ltd. Use or copying of this document in whole or in part without written permission of Water Technology Pty Ltd constitutes an infringement of copyright.

Water Technology Pty Ltd does not warrant this document is definitive nor free from error and does not accept liability for any loss caused, or arising from, reliance upon the information provided herein.

93 Boundary Street
West End QLD 4101

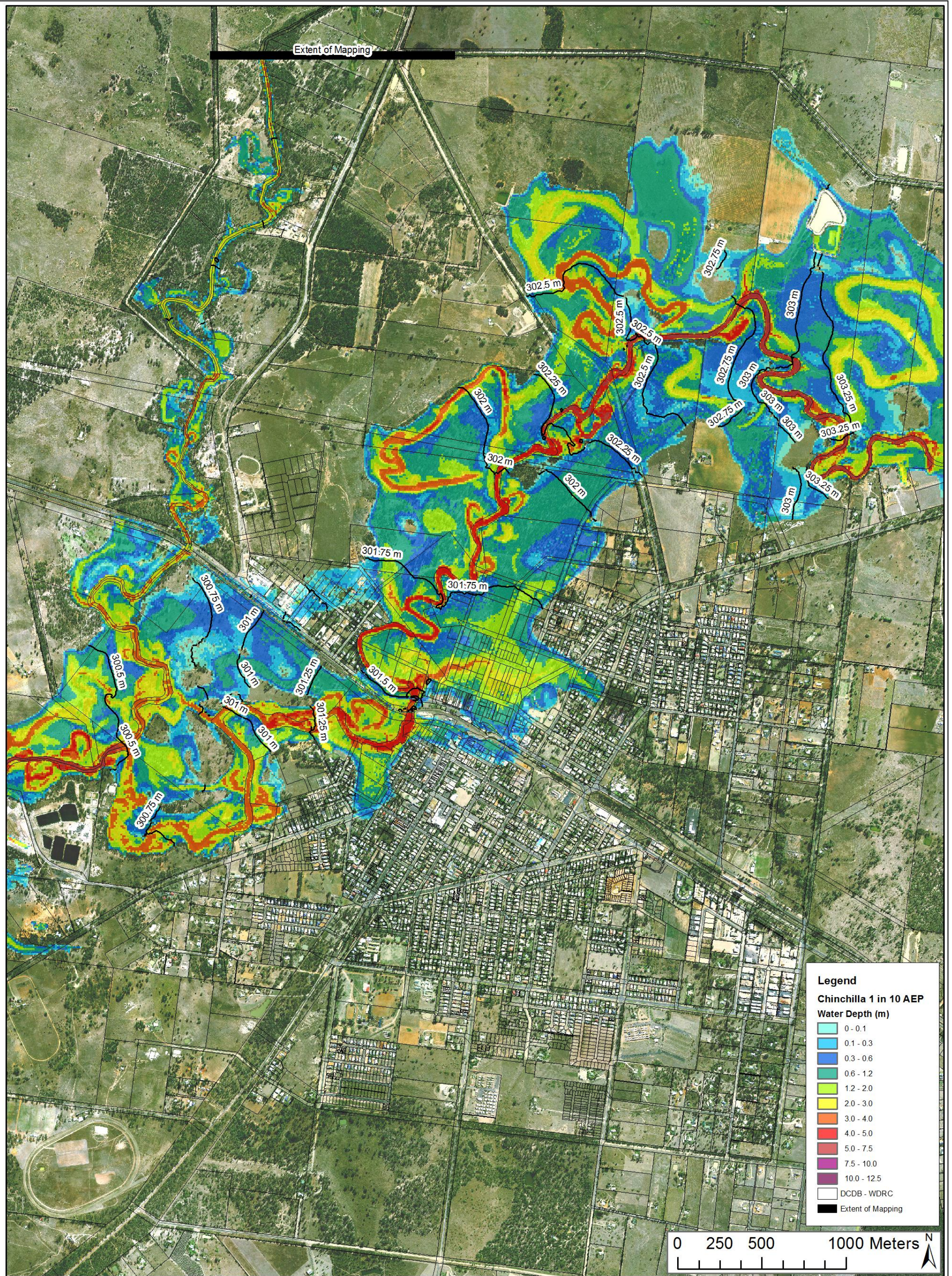
Telephone (07) 3105 1460
Fax (07) 3846 5144

ABN No. 60 093 377 283
ACN No. 093 377 283

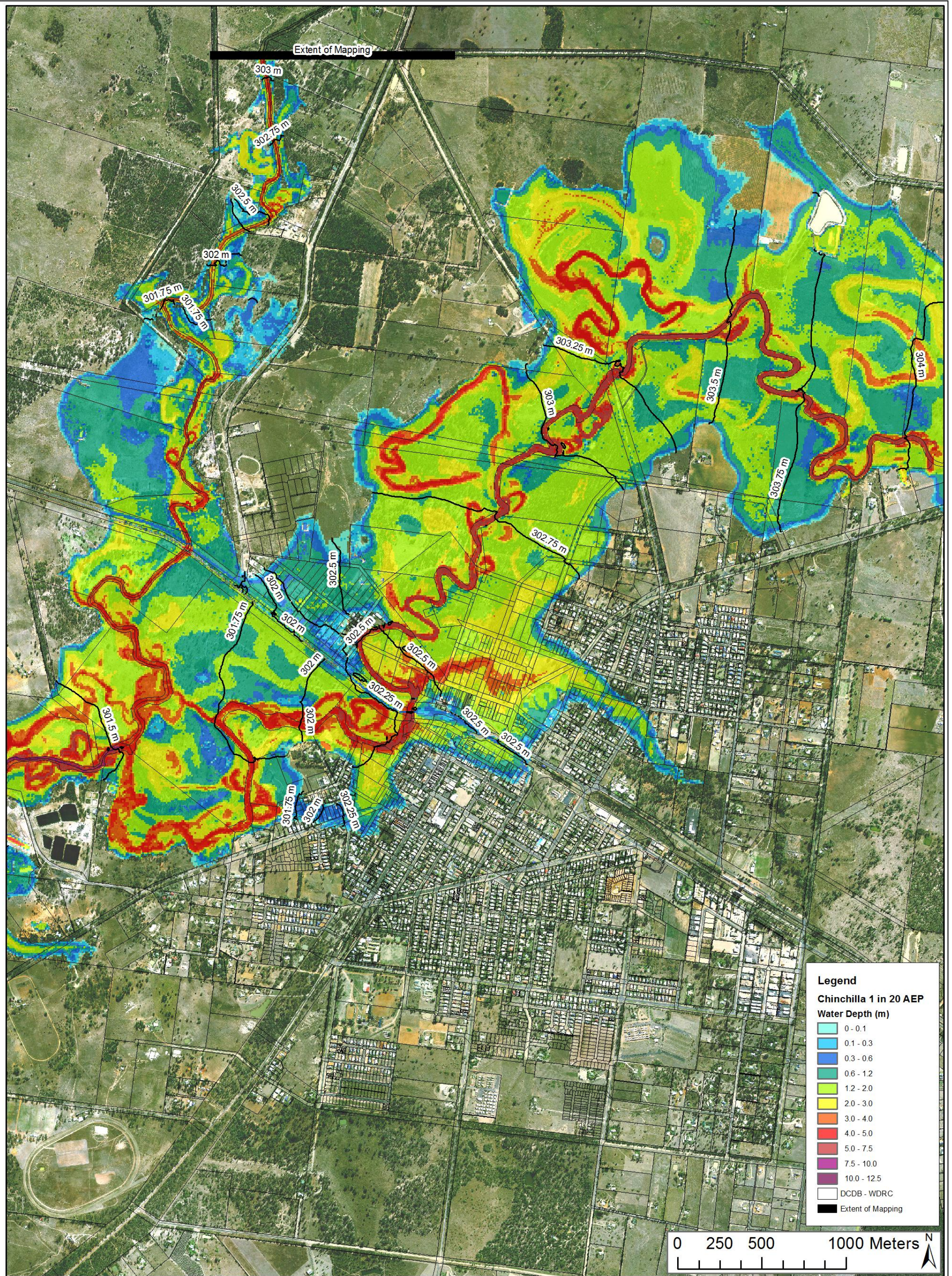


Map Index

Map 1	Chinchilla 1 in 10 AEP Riverine Flood Extent and Depth.....	2
Map 2	Chinchilla 1 in 20 AEP Riverine Flood Extent and Depth.....	2
Map 3	Chinchilla 1 in 50 AEP Riverine Flood Extent and Depth.....	2
Map 4	Chinchilla 1 in 100 AEP Riverine Flood Extent and Depth	2
Map 5	Chinchilla 1 in 100 AEP Riverine Flood Hazard	2
Map 6	Chinchilla 1 in 10 AEP Stormwater Extent and Depth	2
Map 7	Chinchilla 1 in 50 AEP Stormwater Extent and Depth	2
Map 8	Chinchilla 1 in 100 AEP Stormwater Extent and Depth	2



Map 1 Chinchilla 1 in 10 AEP Riverine Flood Extent and Depth



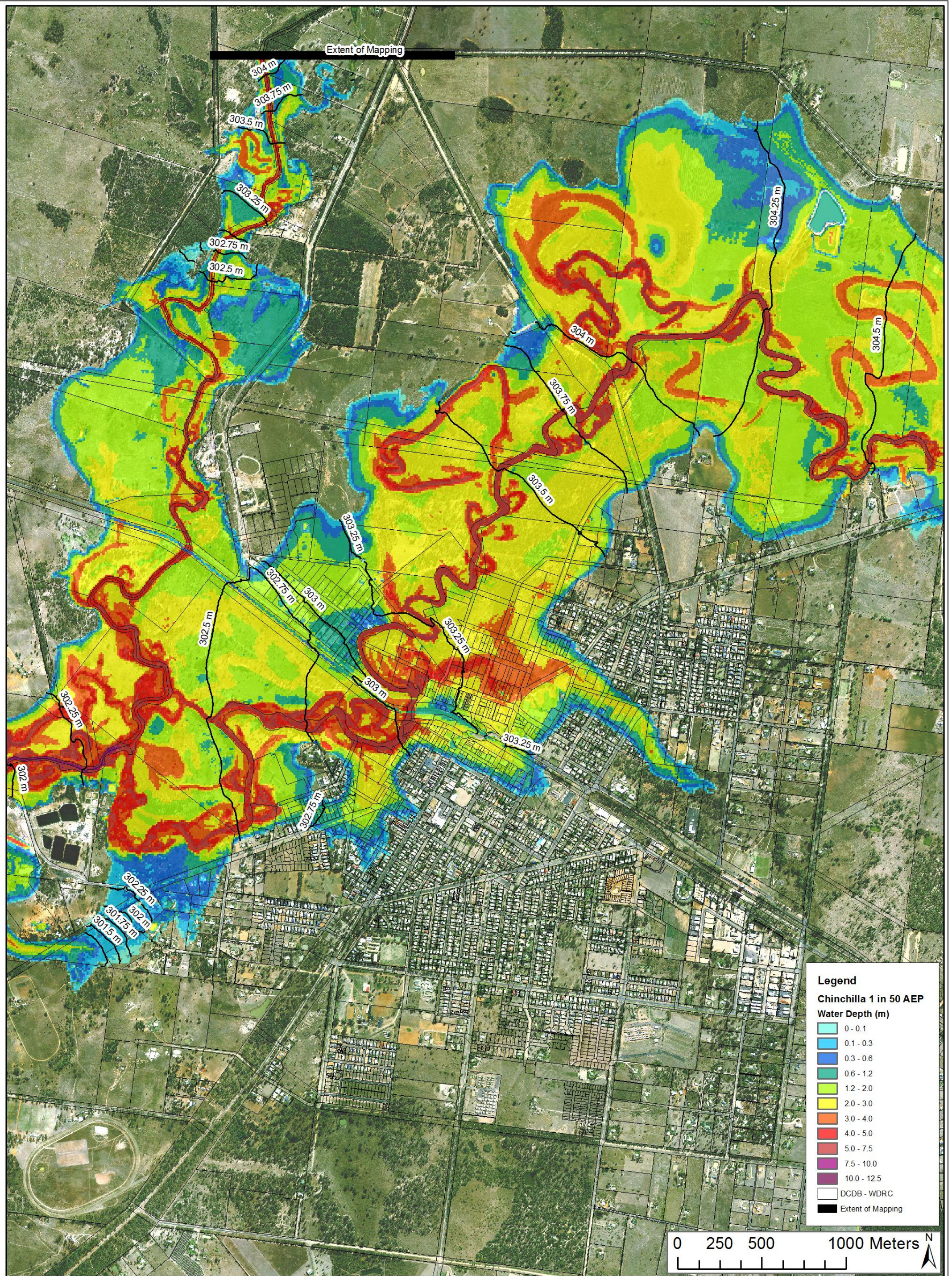
Legend

Chinchilla 1 in 20 AEP
Water Depth (m)

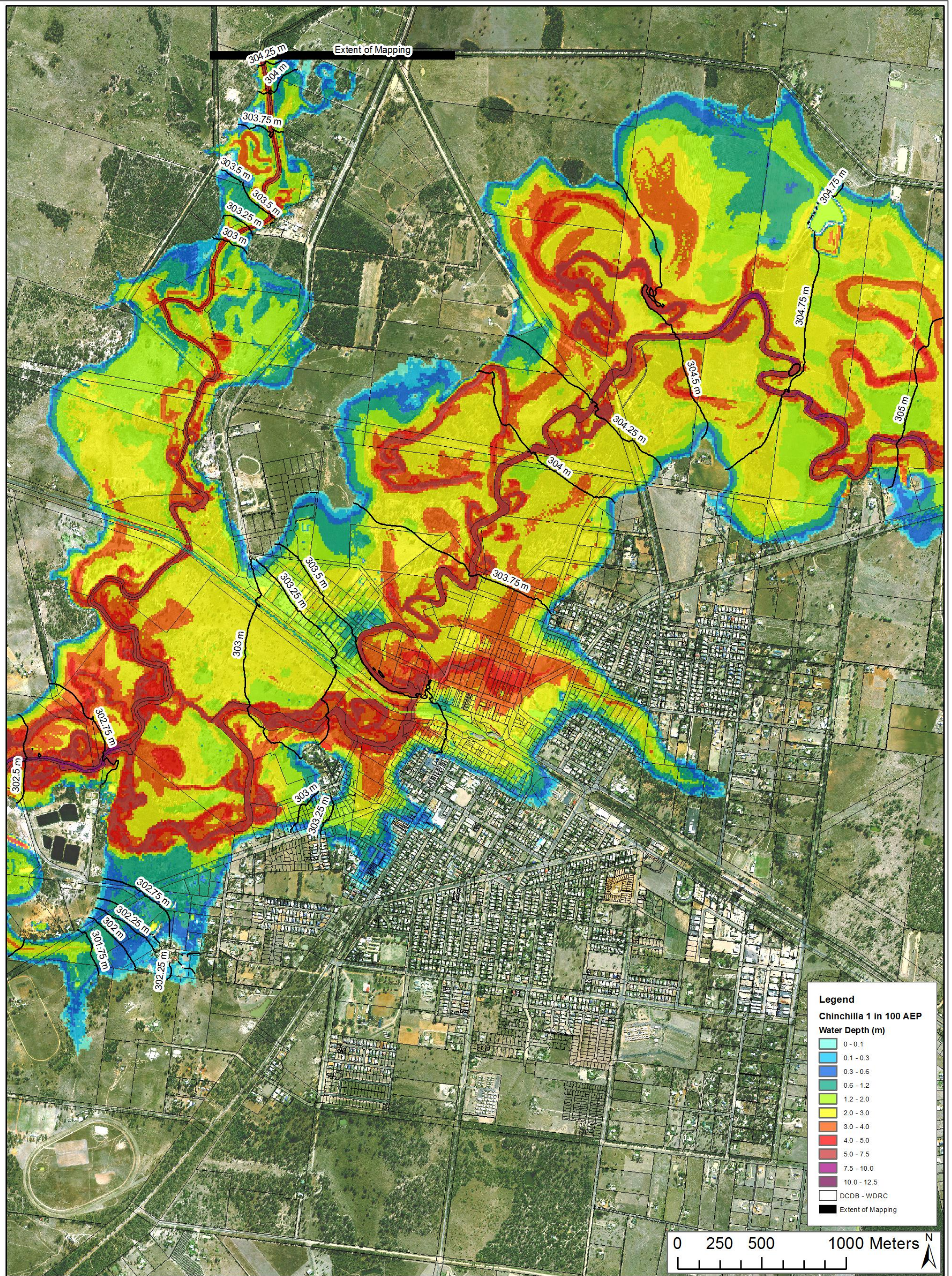
- 0 - 0.1
- 0.1 - 0.3
- 0.3 - 0.6
- 0.6 - 1.2
- 1.2 - 2.0
- 2.0 - 3.0
- 3.0 - 4.0
- 4.0 - 5.0
- 5.0 - 7.5
- 7.5 - 10.0
- 10.0 - 12.5
- DCDB - WDRC
- Extent of Mapping



Map 2 Chinchilla 1 in 20 AEP Riverine Flood Extent and Depth



Map 3 Chinchilla 1 in 50 AEP Riverine Flood Extent and Depth

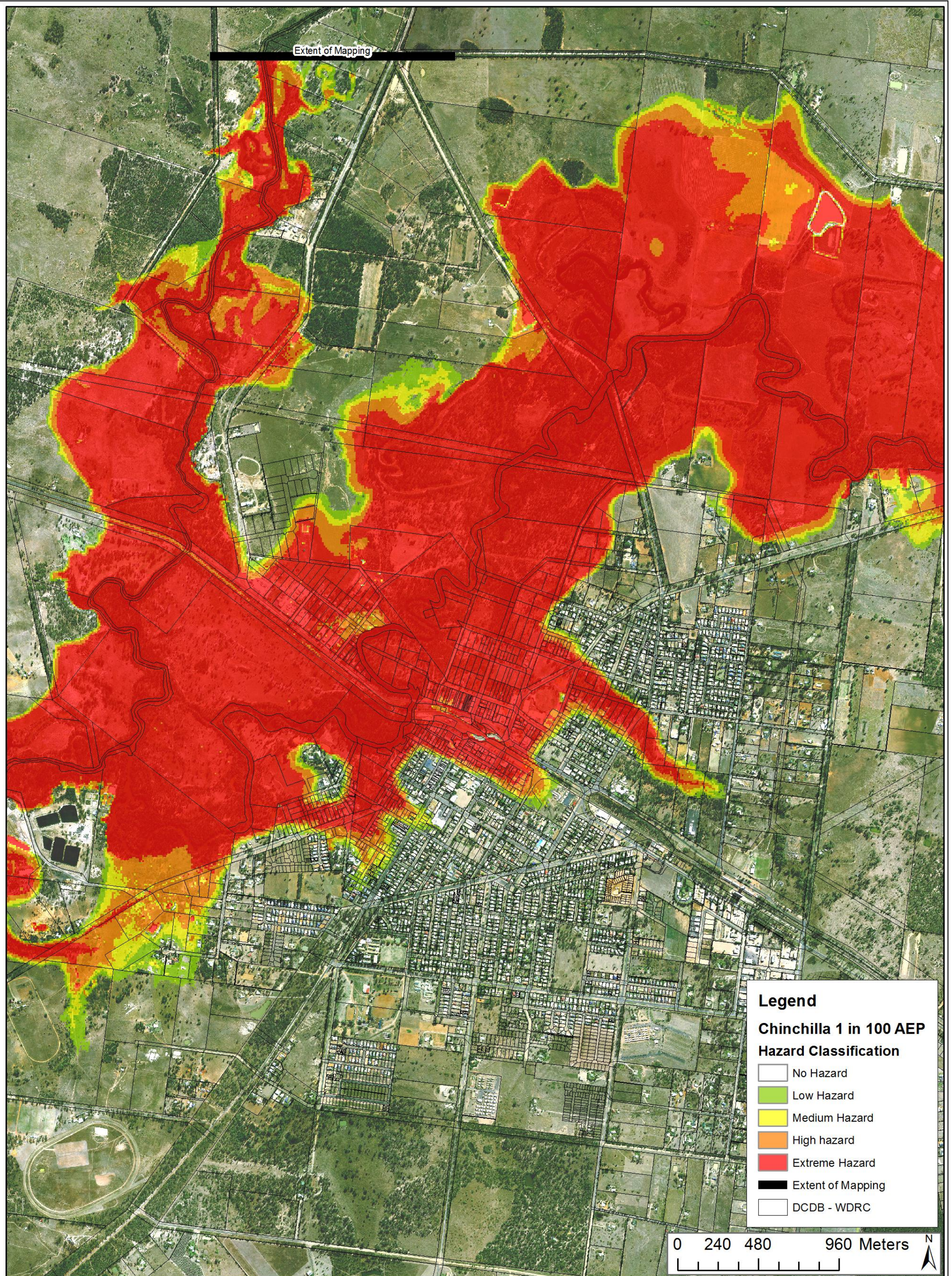


Legend
Chinchilla 1 in 100 AEP
Water Depth (m)

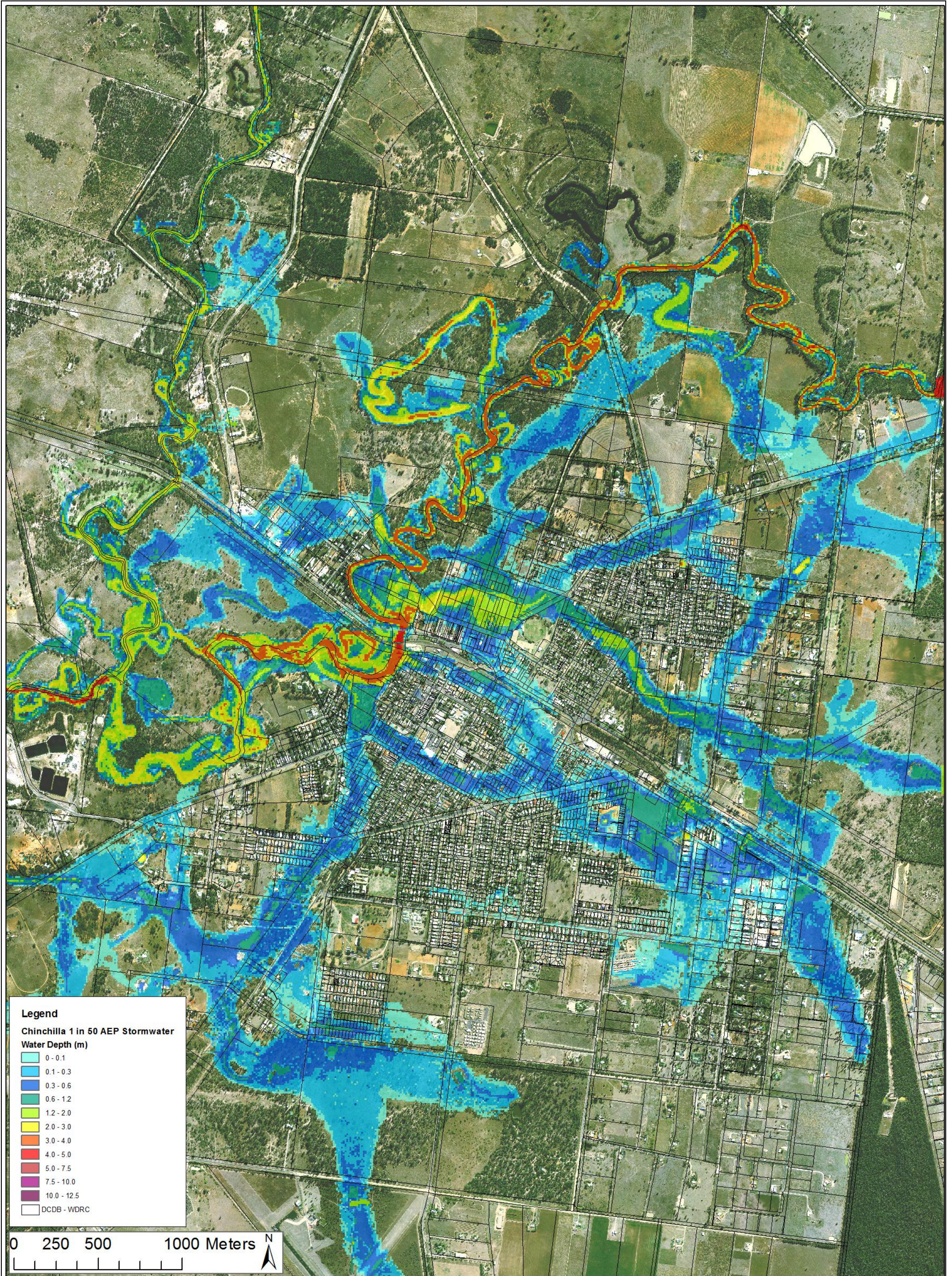
0 - 0.1
0.1 - 0.3
0.3 - 0.6
0.6 - 1.2
1.2 - 2.0
2.0 - 3.0
3.0 - 4.0
4.0 - 5.0
5.0 - 7.5
7.5 - 10.0
10.0 - 12.5
DCDB - WDRC
Extent of Mapping



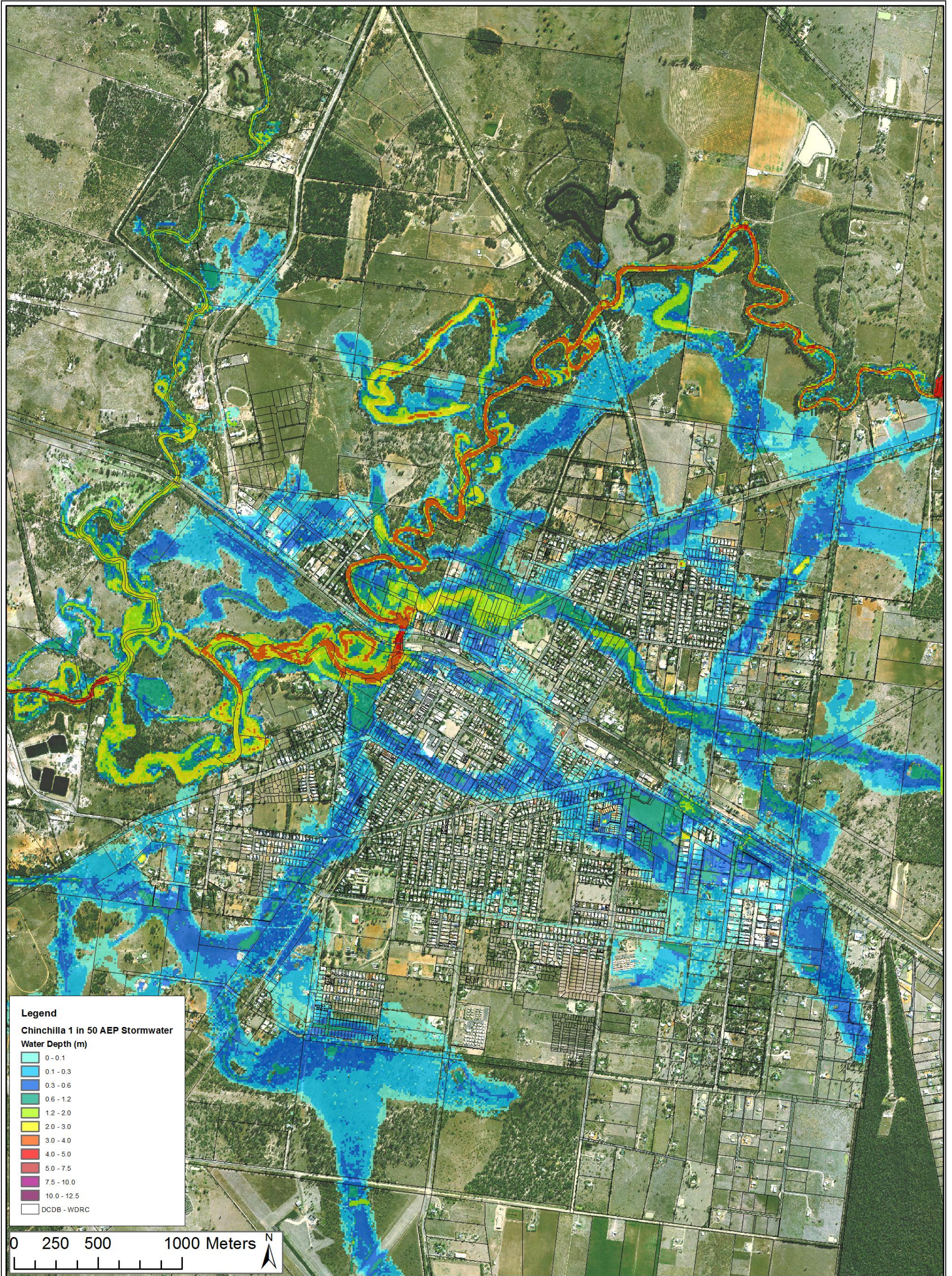
Map 4 Chinchilla 1 in 100 AEP Riverine Flood Extent and Depth



Map 5 Chinchilla 1 in 100 AEP Riverine Flood Hazard



Map 6 Chinchilla 1 in 10 AEP Stormwater Extent and Depth

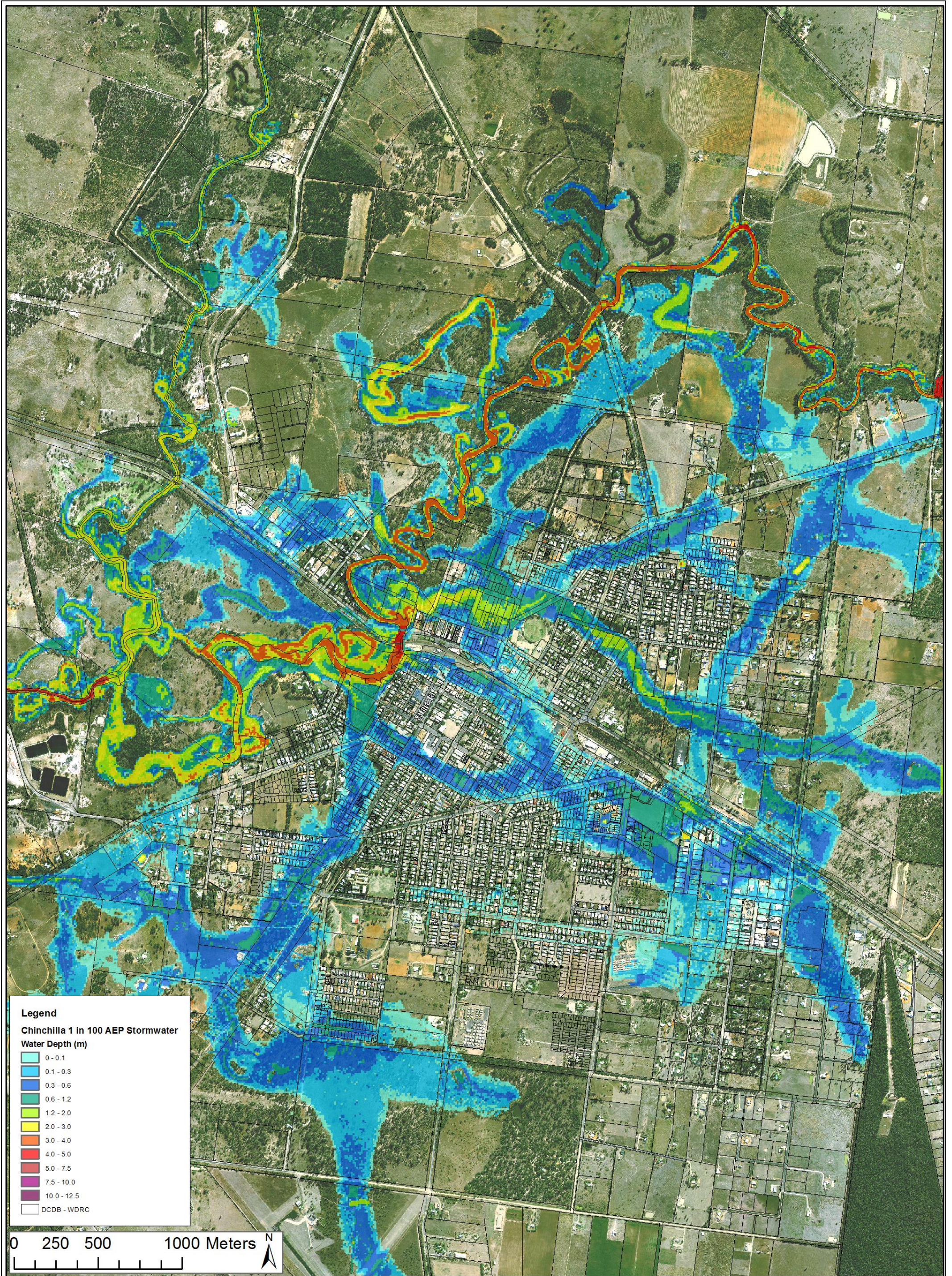


Legend
Chinchilla 1 in 50 AEP Stormwater
Water Depth (m)

- 0 - 0.1
- 0.1 - 0.3
- 0.3 - 0.6
- 0.6 - 1.2
- 1.2 - 2.0
- 2.0 - 3.0
- 3.0 - 4.0
- 4.0 - 5.0
- 5.0 - 7.5
- 7.5 - 10.0
- 10.0 - 12.5
- DCDB - WDRC



Map 7 Chinchilla 1 in 50 AEP Stormwater Extent and Depth



Legend
Chinchilla 1 in 100 AEP Stormwater
Water Depth (m)

0 - 0.1
0.1 - 0.3
0.3 - 0.6
0.6 - 1.2
1.2 - 2.0
2.0 - 3.0
3.0 - 4.0
4.0 - 5.0
5.0 - 7.5
7.5 - 10.0
10.0 - 12.5
DCDB - WDRC

0 250 500 1000 Meters 

Map 8 Chinchilla 1 in 100 AEP Stormwater Extent and Depth