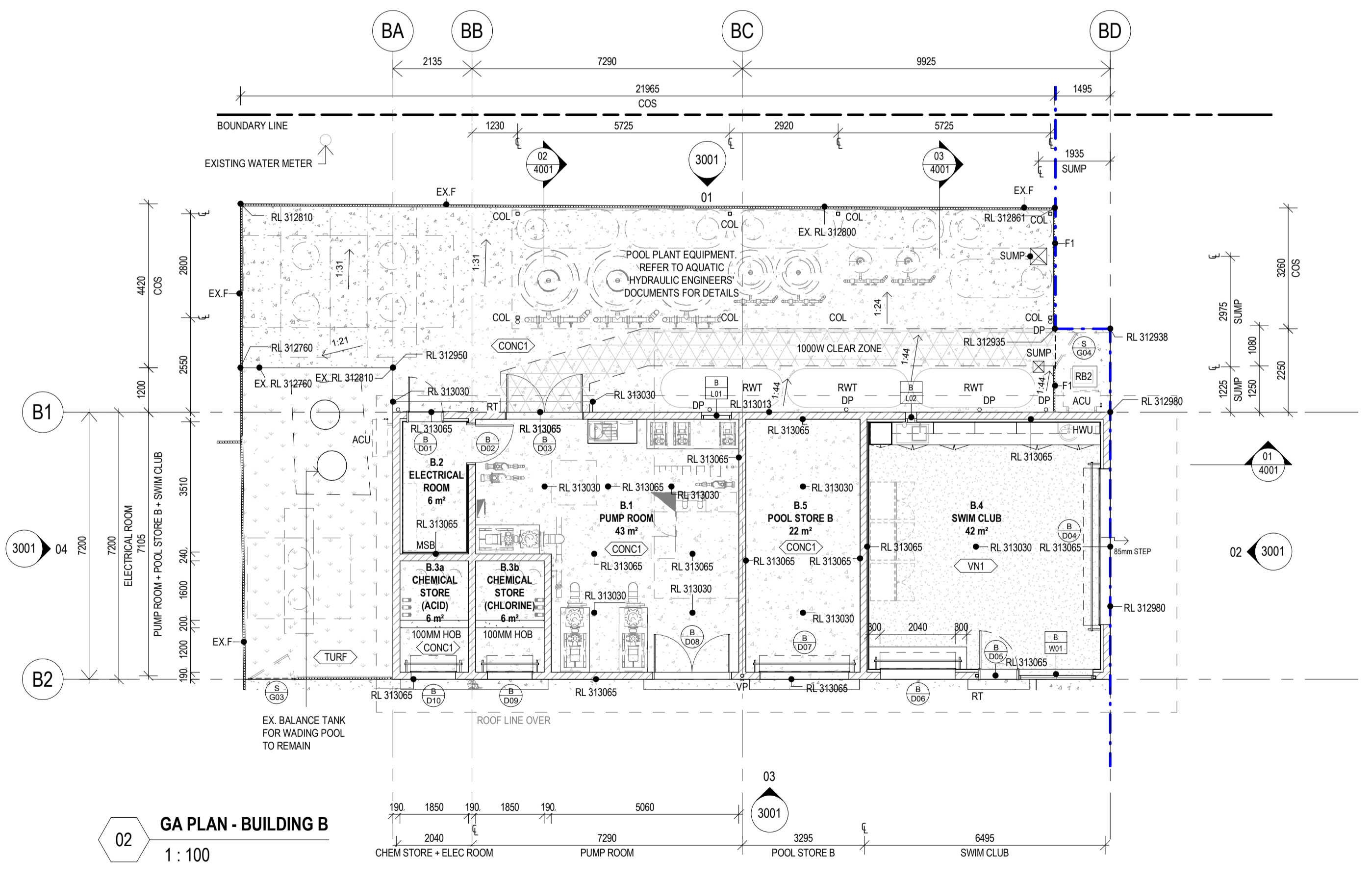
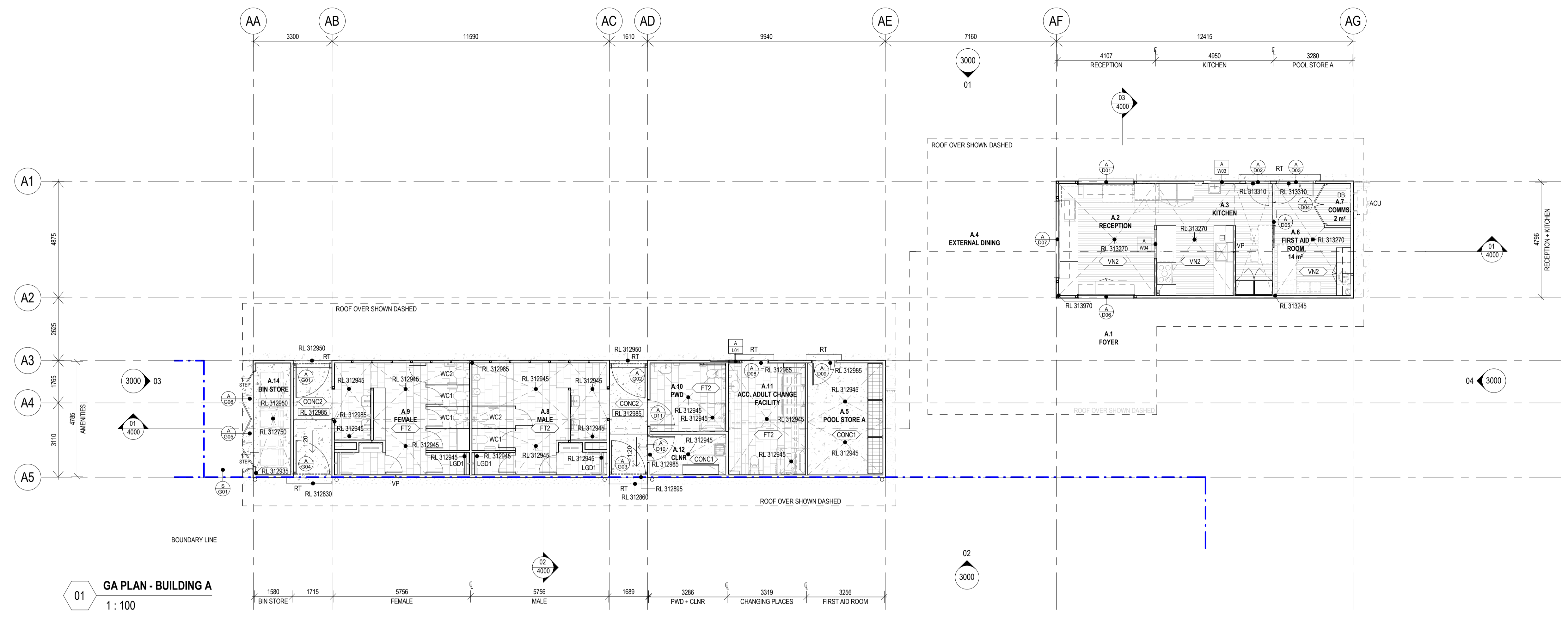


**ABBREVIATION LEGEND**

ACU	AC CONDENSER UNIT
COL	STRUCTURAL COLUMN
DB	DISTRIBUTION BOARD - REF. ELEC DOCS
DP	DOWNPIPE
EXF	EXISTING FENCE
F1	FENCE - TO MATCH EXISTING
HWU	HOT WATER UNIT
LGD1	LINEAR GRATED DRAIN - TYPE 1
MSB	ELECTRICAL MAIN SWITCHBOARD
RB2	REFUSE BIN - TYPE 2
RT	RAMPED THRESHOLD
RWT	RAIN WATER TANK
SUMP	SUMP PIT
VP	VENT PIPE
WC1	TOILET SUITE - TYPE 1
WC2	TOILET SUITE - TYPE 2



**LIQUID BLU**

**CONSULTANTS:**  
**AQUATIC ENGINEER**  
 AQUATIC ONE PTY LTD  
 PH: 07 3267 7295  
**CIVIL ENGINEER**  
 RMA ENGINEERS  
 PH: 07 4639 4100

**ELECTRICAL ENGINEER**  
 ASHBURNER FRANCIS PTY LTD  
 PH: 07 4638 9244  
**HYDRAULIC ENGINEER**  
 ASHBURNER FRANCIS PTY LTD  
 PH: 07 4638 9244

**MECHANICAL ENGINEER**  
 ASHBURNER FRANCIS PTY LTD  
 PH: 07 4638 9244  
**STRUCTURAL ENGINEER**  
 RMA ENGINEERS  
 PH: 07 4639 4100

**SPECIALTY TENSILE ENGR.**  
 OSBORN CONSULTING ENGR.  
 PH: 07 3510 8510  
**LANDSCAPE ARCHITECTURE**  
 ROUNSFELL DESIGN  
 PH: 0459 273 283

**ACCESS CONSULTANT**  
 ARCHITECTURE & ACCESS PTY LTD  
 PH: 1300 715 866  
**GEOTECHNICAL ENGINEER**  
 RMA SOILS PTY LTD  
 PH: 07 4639 4100



REV	DATE	DESCRIPTION	BY
A	21.07.21	DRAFT ISSUE 30%DD	CL
B	04.08.21	FINAL DETAILED DESIGN 30%	CL
C	31.08.21	ISSUE FOR INFORMATION	CL
D	10.09.21	DRAFT DETAILED DESIGN 75%	CL

**ISSUE:**  
**PRELIMINARY ONLY**  
 NOT FOR CONSTRUCTION

**SHEET NAME:**  
 GA PLANS - BUILDING A + B  
**PROJECT:**  
 CM-20-019 :: WDRC - TARA MEMORIAL POOL REDEVELOPMENT  
**PROJECT ADDRESS:**  
 SMALLACOMBE STREET, TARA, QLD 4421

**NORTH:**   
**CH:** YD  
**DR:** CL  
**SHEET #:** DD-2000  
**REV #:** D

NOTES: ALL WORK IS TO COMPLY WITH BCA AND RELEVANT STANDARDS AND THEIR MOST CURRENT AMENDMENTS. DRAWINGS ARE TO BE READ IN CONJUNCTION WITH THE SPECIFICATION, SCHEDULES AND CONSULTANT DRAWINGS. DO NOT SCALE OFF DRAWINGS. NOTIFY THE ARCHITECT OF ANY VARIATIONS OR DISCREPANCIES IN THE DIMENSIONS OF THE DRAWINGS. LIQUID BLU ACCEPTS NO RESPONSIBILITY FOR UNDOCUMENTED VARIATIONS OUTSIDE THE SCOPE OF WORK SHOWN ON THE DRAWINGS OR FOR THE ACCURACY OF INFORMATION SUPPLIED BY OTHERS. SUBSTITUTION OF PRODUCTS OR MATERIALS MAY VOID LIQUID BLU RESPONSIBILITY FOR THE INFORMATION CONTAINED IN THESE DOCUMENTS.